



Connectix
Cabling Systems™

Fibre Fox

Fibre Cabling & Solutions

T: 01376 346600 F: 01376 346620
www.connectixcablingsystems.com

Connectix Cabling Systems™

Fibre Fox



Connectix Fibre range is manufactured and distributed under our umbrella brand Fibre Fox. We stock a wide range of Fibre Cable, Patch Panels and Leads in our extensive UK warehouse, ensuring any of the standard products ordered from us can be with you the following day.

We also boast the UK's largest and quickest termination and manufacturing facility, enabling us to produce bespoke fibre networking products to your configuration and requirements without any delay.

Our team of industry professionals are on hand to assist and advise on any fibre networking enquiries you have, so you can be certain when buying from us your solution will be complete.

Our fibre cable cores range from OM1-OM4 and OS2 and conform to regulated standards (IEC 60332-1, IEC 61034 and IEC 60754). Cables are manufactured with a LSZH flame retardant sheath, which emit limited smoke and no halogen when exposed to high sources of heat, making installations safer and more ecologically friendly.

Fibre Fox fibre panels can be supplied either loaded or unloaded, and are manufactured in several singlemode and multimode combinations, including: SC, LC, FC and ST.

Along with our Fibre Fox products, we offer a Connectix Fibre Optic Training Course. This aims to offer a balanced mix of theory and practical skills relating to the use of fibre optic cabling within the structured cabling system standards EIA/TIA-568C, ISO/IEC 11801 2nd edition and EN50174; and is offered to beginner and experienced installers alike.



T: 01376 346600 **F:** 01376 346620
E: sales@connectix.co.uk
www.connectixcablingsystems.com

Fibre Cabling and Solutions Index

1.1	Pre-Terminated Fibre Links
1.2	Pre-Terminated MTP® Cabling
1.3	Ruggedised MTP® Pre-Terminated Assemblies
1.4	Ruggedised MTP® Break-out Unit
1.5	MTP® Cassettes
1.6	Cleaning Kit
1.7	Harsh Environment Links - LC
1.8	Harsh Environment Links - MTP®
1.9	Fibre Modules
1.10	Sliding Patch Panels
1.11	Lockable Wall Mounted Enclosure
1.12	Break Out Boxes
1.13	Duplex Zip Twin Cable
1.14	Internal/External Tight Buffered Distribution Cable
1.15	Internal/External Uni-loose Tube Distribution Cable
1.16	Uni Tube Corrugated Steel Armoured Cable
1.17	GRP Armoured Cable
1.18	SWA Uni Tube Fibre Cable
1.19	Fibre Optic Pigtails
1.20	Patch Lead
1.21	Armoured Patch Cords
1.22	Mode Conditioned Patch Lead
1.23	XP Fit Plus Field Assembly Connectors
1.24	LC Connectors & Adaptors
1.25	SC Connectors & Adaptors
1.26	ST Connectors & Adaptors
1.27	FC Connectors & Adaptors
1.28	Termination Kit & Fyberscope
1.29	Mini Fusion Splicer Kits
1.33	Foxtails
1.35	High Performance Mini Precision Cleaver
1.36	Fusion Splicer Services
1.37	Fibre Fox Pro Patch Panel
1.43	Connectix Training Courses

Fibre Cabling and Solutions

Pre-Terminated Fibre Links

The Opal™ system allows a fibre optic network to be installed in a fraction of the time taken by conventional on-site direct termination or fusion splicing. It requires no special installation skills or equipment, and can therefore be installed by nonspecialist personnel, vastly reducing the installation cost. The system consists of standard internal/external tight buffered distribution cable, which is supplied in specific lengths for each cable run in an installation. This cable is available in multimode or singlemode with fibre counts of 4, 8, 12, 16 or 24.

The cable is factory prepared with a gland on each end which is epoxy bonded onto the Kevlar Strain Relief Yarn in the cable. The secondary coated fibres are terminated with either ST, SC or LC connectors which are fully tested and certified under our quality system. This ensures that the quality of the complete cable assembly is guaranteed before shipping to site.

A specially developed termination protection sleeve is fitted to each end of the cable assembly to protect the connectors during shipping and installation. This sleeve has a small diameter and is flexible, lightweight and extremely rugged. A pulling eye is incorporated to allow the attachment of a draw cable.



Features & Benefits

- Quick installation time
- Low installation cost
- Full test documentations supplied
- No special fibre optic skills or equipment required
- Factory terminated and tested
- ST, SC and LC connector options (multi & single mode)
- 4, 8, 12, 16 & 24 fibre configurations
- Standard cables and management enclosures

Opal™ Options

Length	Customer Specified
Number of Cores	4 to 24
Connector Types	ST,SC or LC
Fibre Types	62.5/125, 50/125, 9/125

Opal™ Recommended Maximum Distances

	62.5/125 (OM1)	50/125 (OM2)	50/125 (OM3)	50/125 (OM4)	9/125 (OS1)
100 Mbs	2 km	2 km	2 km	2 km	40 km
1 Gbs	275 m	550 m	800 m	1100 m	100 km
10 Gbs	33 m	82 m	300 m	550 m	40 km
40/100 Gbs	-	-	100 m	125 m	40 km

Fibre Cabling and Solutions

Pre-Terminated MTP® Cabling

The Connectix Fibre Fox Pre-terminated Plug and Go Fibre System provides the Rapid Fibre Deployment market with an extremely cost effective, expandable and high speed system. Fibre Fox Plug and Go System utilises MTP® brand pre-terminated assemblies to ensure optimum performance is achieved when interconnecting pre-terminated Fibre Fox cassettes and panels.

Assemblies are available in 12, 24, 48, & 72 fibres, and micro and ruggedised cable in multimode OM1 62.5/125, OM3 50/125 and singlemode OS2 9/125 options. Fibre Fox Plug and Go System is manufactured in our advanced fibre termination facilities under stringently controlled laboratory conditions, and is quality controlled to rigorous standards using advanced fibre interferometer testing equipment.



Features & Benefits

- Quick installation time
- Singlemode & multimode performance
- Ensure optimum interconnect performance
- Up to 72 fibres in one connector
- Interferometer tested
- Quality controlled factory
- Easy to use MTP® brand connector

Ordering Information

Product Description	Part Number
Multimode OM1 62.5/125 (10m)	
12 Fibres - OM1 62.5/125 MTP® Assembly	018-010-0100-12
24 Fibres - OM1 62.5/125 MTP® Assembly	018-010-0100-24
48 Fibres - OM1 62.5/125 MTP® Assembly	018-010-0100-48
72 Fibres - OM1 62.5/125 MTP® Assembly	018-010-0100-71
Multimode OM2 50/125 (10m)	
12 Fibres - OM2 50/125 MTP® Assembly	018-015-0100-12
24 Fibres - OM2 50/125 MTP® Assembly	018-015-0100-24
48 Fibres - OM2 50/125 MTP® Assembly	018-015-0100-48
72 Fibres - OM2 50/125 MTP® Assembly	018-015-0100-72
Multimode OM3 50/125 (10m)	
12 Fibres - OM3 50/125 MTP® Assembly	018-020-0100-12
24 Fibres - OM3 50/125 MTP® Assembly	018-020-0100-24
48 Fibres - OM3 50/125 MTP® Assembly	018-020-0100-48
72 Fibres - OM3 50/125 MTP® Assembly	018-020-0100-72
Singlemode OS2 9/125 (10m)	
12 Fibres - OS2 9/125 MTP® Assembly	018-030-0100-12
24 Fibres - OS2 9/125 MTP® Assembly	018-030-0100-24
48 Fibres - OS2 9/125 MTP® Assembly	018-030-0100-48
72 Fibres - OS2 9/125 MTP® Assembly	018-030-0100-72

Fibre Cabling and Solutions

Ruggedised MTP® Pre-Terminated Assemblies

Intex pre-terminated assemblies are an innovative evolution of the popular Fibre Fox MTP assemblies. The unique connector housing (patent pending) not only prevents damage to the connector during installation, but also provides a rugged pulling eye. Then, once installed, the cap incorporating the pulling eye can be removed, and the housing becomes a permanent protection cover for the MTP connector, locking onto specially designed panel mount bulkheads with a simple twist action.

The integrated strain relief gives the added benefit of allowing the use of standard internal/external loostube cables – offering a wide range of cost effective cable types ranging from OM1 (62.5/125) through to OM3 (50/125) and OS2 (9/125).

The Fibre Fox System is manufactured in our advanced fibre termination facility under stringent laboratory conditions, and is quality controlled to rigorous standards using advanced interferometer inspection equipment.

Features & Benefits
<ul style="list-style-type: none">• Unique patent pending system• Rugged construction• Internal/external cable• Integrated pulling eye• Singlemode & multimode options• Rapid fibre deployment



Ordering Information	
Product Description	Part Number
Multimode OM1 62.5/125	
12 Fibres - OM1 62.5/125 MTP® Assembly	018-110-XXXX-12
24 Fibres - OM1 62.5/125 MTP® Assembly	018-110-XXXX-24
48 Fibres - OM1 62.5/125 MTP® Assembly	018-110-XXXX-48
72 Fibres - OM1 62.5/125 MTP® Assembly	018-110-XXXX-72
Multimode OM2 50/125	
12 Fibres - OM2 50/125 MTP® Assembly	018-115-XXXX-12
24 Fibres - OM2 50/125 MTP® Assembly	018-115-XXXX-24
48 Fibres - OM2 50/125 MTP® Assembly	018-115-XXXX-48
72 Fibres - OM2 50/125 MTP® Assembly	018-115-XXXX-78
Multimode OM3 50/125	
12 Fibres - OM3 50/125 MTP® Assembly	018-120-XXXX-12
24 Fibres - OM3 50/125 MTP® Assembly	018-120-XXXX-24
48 Fibres - OM3 50/125 MTP® Assembly	018-120-XXXX-48
72 Fibres - OM3 50/125 MTP® Assembly	018-120-XXXX-72
Singlemode OS2 9/125	
12 Fibres - OS2 9/125 MTP® Assembly	018-130-XXXX-12
24 Fibres - OS2 9/125 MTP® Assembly	018-130-XXXX-24
48 Fibres - OS2 9/125 MTP® Assembly	018-130-XXXX-48
72 Fibres - OS2 9/125 MTP® Assembly	018-130-XXXX-72

XXXX = Length in metres

Fibre Cabling and Solutions:

Ruggedised MTP® Break-out Unit

When used with Intex pre-terminated assemblies, the Intex Break-out Unit provides a simple cost effective method of breaking out a High Density MTP connector to traditional simplex/duplex connectors. Once the Intex pre-terminated assembly has been installed, the pulling cap is removed, and the break out unit is plugged in. The patent pending housings are then screwed together to provide a safe, rugged interconnection.

The Intex System allows for rapid installation of High Density fibre connections and is available in a wide range of cost effective cable types ranging from OM1 (62.5/125) through to OM3 (50/125) and OS2 (9/125). The units can be supplied with a wide range of terminations including LC, FC, SC and ST. An Intex MTP-MTP® Coupler is also available to allow Intex pre-terminated assemblies to be joined in a rugged housing.

The Fibre Fox System is manufactured in our advanced fibre termination facility under stringent laboratory conditions, and is quality controlled to rigorous standards using advanced interferometer inspection equipment.

Features & Benefits
<ul style="list-style-type: none">• Unique patent pending system• Rugged construction• Instant MTP break-out• Wide range of connectors• Singlemode & multimode options• Rapid fibre deployment• Available in 12 or 24 ways



Ordering Information	
Product Description	Part Number
Multimode OM1 62.5/125	
LC - OM1 62.5/125 Intex Break Out Assembly	018-510-100-XX
FC - OM1 62.5/125 Intex Break Out Assembly	018-510-100-XX
SC - OM1 62.5/125 Intex Break Out Assembly	018-510-100-XX
ST - OM1 62.5/125 Intex Break Out Assembly	018-510-100-XX
Multimode OM2 50/125	
LC - OM2 50/125 Intex Break Out Assembly	018-515-100-XX
FC - OM2 50/125 Intex Break Out Assembly	018-515-100-XX
SC - OM2 50/125 Intex Break Out Assembly	018-515-100-XX
ST - OM2 50/125 Intex Break Out Assembly	018-515-100-XX
Multimode OM3 50/125	
LC - OM3 50/125 Intex Break Out Assembly	018-520-100-XX
FC - OM3 50/125 Intex Break Out Assembly	018-520-100-XX
SC - OM3 50/125 Intex Break Out Assembly	018-520-100-XX
ST - OM3 50/125 Intex Break Out Assembly	018-520-100-XX
Singlemode OS2 9/125	
LC - OS2 9/125 Intex Break Out Assembly	018-530-100-XX
FC - OS2 9/125 Intex Break Out Assembly	018-530-100-XX
SC - OS2 9/125 Intex Break Out Assembly	018-530-100-XX
ST - OS2 9/125 Intex Break Out Assembly	018-530-100-XX
Intex MTP-MTP Through Coupler	018-500-000-00

XX = Number of ways (12 or 24)

Fibre Cabling and Solutions

MTP® Cassettes

The Connectix Fibre Fox Brand Pre-terminated Plug and Go Fibre System provides the Rapid Fibre Deployment market with an extremely cost effective, expandable and high speed system.

The Fibre Fox Modular Panel and cassettes have been designed to simplify installation, and offer users an easy to expand modular system. Fibre Fox modular panels can accept 4 or 10 unloaded cassettes, which are simply inserted and locked into the panel by push/pull pins. For upgrading or maintenance purposes, cassettes can be easily unlocked and removed from the panel.

Fibre Fox cassettes are factory pre-terminated and available in 6 duplex SC, and 6 and 12 duplex LC options. MTP® brand connectors simply plug into the rear of the cassette, and inside pre-terminated multiple fibre cable splits out to either LC or SC connectors at the front.



Features & Benefits

- Expandable modular system
- 1u or 3u capacity
- Quality controlled factory pre-terminated cassette
- 120 SC or 240 way LC capacity
- 4 or 10 modular panel options
- Utilises High Density MTP® brand connectors
- Reduces installation time and costs
- Compact and easily removable cassette

Specifications

Finish	Fine Textured black paint
Material	Mild steel
Width	483 mm
Depth	180 mm
Height	1u or 3 u
Capacity	4 or 10 cassettes

Ordering Information

Product Description	Part Number
OM2 50/125 Cassettes	
6 Duplex LC Cassette	009-025-072-12
12 Duplex LC Cassette	009-025-072-24
6 Duplex SC Cassette	009-025-062-12
OM3 50/125 Cassettes	
6 Duplex LC Cassette	009-025-070-12
12 Duplex LC Cassette	009-025-070-24
6 Duplex SC Cassette	009-025-060-12
OS2 9/125 Cassettes	
6 Duplex LC Cassette	009-025-071-12
12 Duplex LC Cassette	009-025-071-24
6 Duplex SC Cassette	009-025-061-12
Modular Panels	
1u 4 Slot Modular Panel	009-025-050-10
Panel Blank	
Panel Blank	009-025-050-00

Fibre Cabling and Solutions

Cleaning Kit

The MTP® cleaning kit ensures optimum connector performance is maintained. The kit has been specifically designed to clean while inside a connector, faceplate or bulkhead. It is very effective on dust and oil and is capable of over 600 cleanings per unit; the cleaning cloth is debris free and washed.

Features & Benefits

- Effective cleaner for MTP® connectors
- Dry cloth cleaner
- Cleans connectors with or without pins
- Cleans while inside an adaptor, faceplate or bulkhead
- Over 600 cleanings per unit



Ordering Information

Product Description	Part Number
MTP® Cleaning Kit	004-001-001-56

Fibre Cabling and Solutions

Harsh Environment Links -LC

The Fibre Fox 'Harsh Environment Links' are ideal in situations of extreme, rugged terrain where standard cable can be easily damaged or affected by weather conditions. Links are available in 2 or 4 way options, multimode (OM1, OM2, OM3 & OM4) or singlemode (OS1, OS2), with LC bulkheads. The Fibre Fox System is manufactured in our advanced fibre termination facilities under stringently controlled laboratory conditions, and is quality controlled to rigorous standards using advanced testing equipment.

Pulling Head Specifications	
Material	Black acetal
Maximum diameter	30 mm
Overall length (exc. strain relief)	97 mm
Overall length (inc. strain relief)	152 mm
Weight (approx.)	60 g
IP Rating	65
Connector Loss	<0.5 dB

Ordering Information	
Product Description	Part Number
Multimode	
OM1 2 Way LC Fibre Link	019-010-XXXX-02
OM1 4 Way LC Fibre Link	019-010-XXXX-04
OM2 2 Way LC Fibre Link	019-020-XXXX-02
OM2 4 Way LC Fibre Link	019-020-XXXX-04
OM3 2 Way LC Fibre Link	019-030-XXXX-02
OM3 4 Way LC Fibre Link	019-030-XXXX-04
OM4 2 Way LC Fibre Link	019-040-XXXX-02
OM4 4 Way LC Fibre Link	019-040-XXXX-04
Singlemode	
OS1 2 Way LC Fibre Link	019-050-XXXX-02
OS1 4 Way LC Fibre Link	019-050-XXXX-04
OS2 2 Way LC Fibre Link	019-060-XXXX-02
OS2 4 Way LC Fibre Link	019-060-XXXX-04
Bulkheads	
2 Way Multimode LC Bulkhead	004-001-023-02
4 Way Multimode LC Bulkhead	004-001-023-04
2 Way Singlemode LC Bulkhead	004-001-023-22
4 Way Singlemode LC Bulkhead	004-001-023-24

XXXX = Length in metres

Features & Benefits	
<ul style="list-style-type: none">• For external use and harsh environments• Ideal for all Ethernet applications• Supplied on a triple flange drum or field deployable reel• OM1, OM2, OM3, OM4, OS1 or OS2 options available• Made to length in the UK	

Cable Specifications	
Cable Type	2 or 4 fibre military tactical breakout cable
Strength Members	Aramid yarns
Outer Jacket	Black polyurethane
Weight	2 Fibre: 25kg/km; 4 Fibre: 27kg/km
Outer Diameter	2 Fibre: 5.6mm; 4 Fibre: 5.9mm
Tensile Load (Permanent)	1000N
Tensile Load (Installation)	1800N
Crush	440N/cm
Impact Resistance	200 impacts
Temperature Range	-45°C to +85°C
Minimum Bend Radius	2 Fibre: 56mm; 4 Fibre: 59mm



Fibre Cabling and Solutions

Harsh Environment Links - MTP®

The Fibre Fox 'Harsh Environment Links' are ideal in situations of extreme, rugged terrain where standard cable can be easily damaged or affected by weather conditions. Links are available for 12 way multimode (OM1, OM2, OM3 & OM4) or singlemode (OS1, OS2), with MTP bulkheads.

The Fibre Fox System is manufactured in our advanced fibre termination facilities under stringently controlled laboratory conditions, and is quality controlled to rigorous standards using advanced testing equipment.

Features & Benefits	
<ul style="list-style-type: none">• For external use and harsh environments• Ideal for all Ethernet applications• Supplied on a triple flange drum or field deployable reel• OM1, OM2, OM3, OM4, OS1 or OS2 options available• Made to length in the UK	

Cable Specifications	
Cable Type	12 fibre military tactical breakout cable
Strength Members	Aramid yarns
Outer Jacket	Black polyurethane
Weight	50kg/km
Outer Diameter	7.8mm
Tensile Load (Permanent)	1000N
Tensile Load (Installation)	1800N
Crush	4000N/cm
Impact Resistance	200 impacts
Temperature Range	-45°C to +85°C

Pulling Head Specifications	
Material	Black acetal
Maximum diameter	30 mm
Overall length (exc. strain relief)	157 mm
Overall length (inc. strain relief)	212 mm
Weight (approx.)	72 g
IP Rating	65
Connector Loss	<0.5 dB

Ordering Information	
Product Description	Part Number
Multimode	
OM1 12 Way MTP Fibre Link	019-070-XXXX-12
OM2 12 Way MTP Fibre Link	019-080-XXXX-12
OM3 12 Way MTP Fibre Link	019-090-XXXX-12
OM4 12 Way MTP Fibre Link	019-100-XXXX-12
Singlemode	
OS1 12 Way MTP Fibre Link	019-110-XXXX-12
OS2 12 Way MTP Fibre Link	019-120-XXXX-12
Bulkheads	
12 Way Multimode MTP Bulkhead	004-001-023-30
12 Way Singlemode MTP Bulkhead	004-001-023-40



Fibre Cabling and Solutions

Fibre Modules

Fibre Fox Fibre Modules offer 'fibre to the desk' and bring the exceptional benefits of fibre optics to LANs.

The range of LC, SC and FC/PC outlets can be integrated with Connectix Enhanced Category 5, Category 6, Category 6A and Voice Modules to give a versatile range of outlet configurations. They can also be fitted into Connectix single or dual gang faceplates to give fibre optics a traditional look.

Features & Benefits

- Fibre to the desk
- Interchangeable with other Connectix modules and 1/4 blanks
- Individually QA tested
- Manufactured in the UK

Specifications

Width	25 mm
Depth	35 mm
Height	50 mm
Back Box Depth	Minimum 24 mm recommended
Material	BS thermoplastic resin, with grade UL94 VO at 1.5mm flame retardant
Finish	High gloss



Ordering Information

Product Description	Part Number
LC Angled Connectix Module	008-001-000-02
SC Angled Connectix Module	008-001-000-01
FC/PC Angled Connectix Module	008-001-000-03
Please note, these are not Euro size and only fit the following faceplates:	
Standard Single Gang Connectix Faceplate	008-001-002-05
Standard Dual Gang Connectix Faceplate	008-001-003-05
Compact Single Gang Connectix Faceplate	008-001-002-06
Compact Dual Gang Connectix Faceplate	008-001-003-06
Standard Elite Single Gang Connectix Faceplate	008-001-002-01
Standard Elite Dual Gang Connectix Faceplate	008-001-003-02
Compact Elite Single Gang Connectix Faceplate	008-001-002-02
Connectix Quarter Blank	008-001-004-05

Fibre Cabling and Solutions

Sliding Patch Panels

The Fibre Fox range of sliding patch panels are available with a wide range of adaptor types and populations. The panels are manufactured from mild steel and are finished in a black powder coating. The panels feature fully adjustable mounting brackets, numbered adaptor ports and a range of panel knock-outs to suit common gland sizes. The panels include a sliding tray for easy access to splices. Panels are supplied fully loaded and complete with splice management. Unloaded versions and other connector styles are available upon request.

Features & Benefits

- Easy access to splices from the front of the rack
- LC, SC & ST versions available
- High quality rigid mild steel construction
- Rear cable gland knock outs
- Adjustable mounting brackets for flush or recessed fitting
- Fibre management kits included

Specifications

Width	483 mm (19")
Depth	200 mm
Height	44 mm (1U)
Weight	2.8kg (fully loaded)
Colour	Black (RAL9004)
Cable Entry Gland Holes	4 x 10mm and 2 x 20mm

Ordering Information

Product Description	Part Number
Sliding Panel, 4 Duplex LC Multimode	009-022-040-04S
Sliding Panel, 8 Duplex LC Multimode	009-022-040-08S
Sliding Panel, 12 Duplex LC Multimode	009-022-040-12S
Sliding Panel, 16 Duplex LC Multimode	009-022-040-16S
Sliding Panel, 24 Duplex LC Multimode	009-022-040-24S
Sliding Panel, 12 Quad LC Multimode	009-022-040-48S
Sliding Panel, 16 Quad LC Multimode	009-022-040-64S
Sliding Panel, 18 Quad LC Multimode	009-022-040-72S
Sliding Panel, 24 Quad LC Multimode	009-022-040-96S
Sliding Panel, 4 Duplex LC Singlemode	009-023-040-04S
Sliding Panel, 8 Duplex LC Singlemode	009-023-040-08S
Sliding Panel, 12 Duplex LC Singlemode	009-023-040-12S
Sliding Panel, 16 Quad LC Singlemode	009-023-040-16S
Sliding Panel, 18 Quad LC Singlemode	009-023-040-18S
Sliding Panel, 24 Quad LC Singlemode	009-023-040-24S
Sliding Panel, 4 Duplex SC Multimode	009-022-020-04S
Sliding Panel, 8 Duplex SC Multimode	009-022-020-08S
Sliding Panel, 12 Duplex SC Multimode	009-022-020-12S
Sliding Panel, 16 Duplex SC Multimode	009-022-020-16S
Sliding Panel, 24 Duplex SC Multimode	009-022-020-24S



Fibre Cabling and Solutions

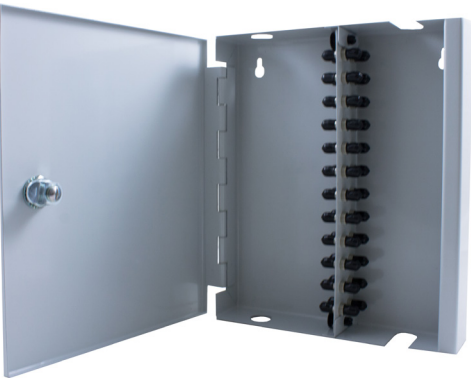
Lockable Wall Mounted Enclosure

The Fibre Fox Lockable Wall Box provides an ideal solution for secure patching in any location where a cabinet or other suitable enclosure is not available.

Manufactured from 1.5mm mild steel, the enclosure features two doors with different locks and an interchangeable internal panel which is available for a wide range of adaptor types. Cable entry and patchcord exit is from the top or the bottom of the unit. Four knockouts are provided (top and bottom) to suit common cable gland sizes.

The enclosure can be supplied loaded or unloaded and with optional fibre/splice management kits.

*Unless specified the ST loaded wall boxes are fitted with one door.



Features & Benefits

- High quality welded steel construction
- Two doors with different locks (SC version only)
- Internal panels available for SC, ST, FC, FDDI and ESCON
- Supplied unloaded or loaded with adaptors
- Four cable entry knock-outs on top and bottom
- Patchcord exit from top or bottom
- Custom colour and silk screen service
- Fibre management kits available

Ordering Information

Product Description	Part Number
Lockable Wall Mounted SC 16 Way Enclosure	009-009-002-16
Lockable Wall Mounted SC 24 Way Enclosure	009-009-002-24
Lockable Wall Mounted SC 36 Way Enclosure	009-009-002-36
Lockable Wall Mounted ST 16 Way Enclosure	009-009-001-16
Lockable Wall Mounted ST 24 Way Enclosure	009-009-001-24
Lockable Wall Mounted ST 36 Way Enclosure	009-009-001-36
SC (1-36 Way) Lockable Enclosure - Unloaded	009-009-002-00
ST (1-36 Way) Lockable Enclosure - Unloaded	009-009-001-00

Fibre Cabling and Solutions

Break Out Boxes

The Fibre Fox range of wall mountable break out boxes are designed to provide a cost effective method of patching or splicing in situations where equipment racks or cabinets are not available.

The break out boxes are available in tough and lightweight ABS or mild steel for more demanding situations. The boxes can be supplied fully loaded with all common adaptors including LC, SC, ST, SMA, FC, FDDI and ESCON types. They are supplied in a number of popular formats including 1in/1out, 1in/2out and 2in/2out. We provide a custom machining service enabling us to supply any other splice box configuration or hybrid enclosures on very short lead times. All enclosures are offered with full fibre/splice management kit options and are available from stock.

Features & Benefits

- Tough construction
- Patch, splice or hybrid versions
- Wall mountable
- Available with fibre/splice management kits
- Custom machining service
- Low cost
- Stock availability

Specifications

Dimensions	180mm x 140mm x 80mm (ST & FC) 100mm x 100mm x 40mm (LC & SC)
Material	ABS (ST & FC) or mild steel (LC & SC)
Colour	Light Grey

Ordering Information

Product Description	Part Number
LC 4 Way Break Out Box	009-008-006-04
LC 8 Way Break Out Box	009-008-006-08
LC 12 Way Break Out Box	009-008-006-12
SC 4 Way Loaded Steel Break Out Box	009-008-007-04
SC 8 Way Loaded Steel Break Out Box	009-008-007-08
SC 12 Way Loaded Steel Break Out Box	009-008-007-12
SC 16 Way Loaded Steel Break Out Box	009-008-007-16
ST 4 Way Break Out Box	009-008-001-04
ST 8 Way Break Out Box	009-008-001-08
ST 12 Way Break Out Box	009-008-001-12
FC 4 Way Break Out Box	009-008-004-04
FC 8 Way Break Out Box	009-008-004-08
FC 12 Way Break Out Box	009-008-004-12
SMA 4 Way Break Out Box	009-008-002-04
SMA 8 Way Break Out Box	009-008-002-08
SMA 12 Way Break Out Box	009-008-002-12
1 Gland In/1 Out Break Out Box	009-007-002-11
1 Gland In/2 Out Break Out Box	009-007-002-12
2 Glands In/2 Out Break Out Box	009-007-002-14
2 Glands Same End Break Out Box	009-007-002-02



Fibre Cabling and Solutions

Duplex Zip Twin Cable

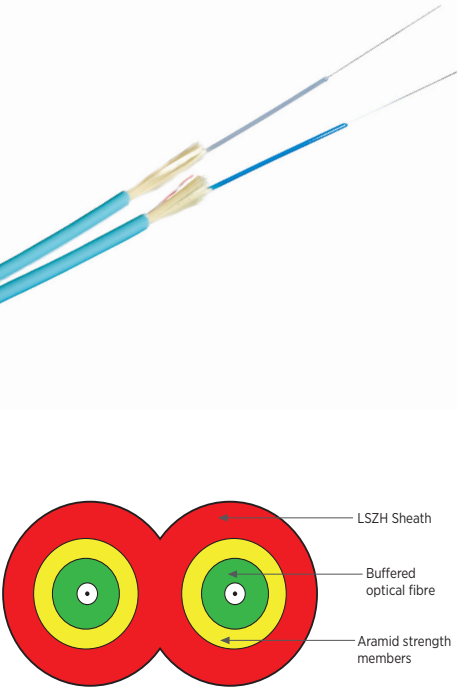
Fibre Fox zip twin cables, often referred to as duplex cables, are constructed with two simplex units joined together by a central web. These tight jacketed cables utilise 900 micron buffered fibre and are constructed into 2.8mm cables. In addition, mini zip twin cable is also available, using 600 micron buffers.

Features & Benefits
<ul style="list-style-type: none">• Range of fibres available• Direct termination• Compact rugged construction• LSZH sheath• Multimode fibre: Hytrel tight buffered• Singlemode fibre: Easistrip gelfree LSZH semi-tight buffered providing 30cm stripping for quick termination• Mini zip twin: Nylon tight buffered

Applications
Ideal for patch leads, pigtails, test leads etc.

Specifications	
Temperature Range	
-Transport / Storage	-10°C to +70°C
-Installation	- 5°C to +50°C
-Operation	-10°C to +70°C
Crush Resistance	1000N
Diameter Over Buffered Fibre	900 +/- 50 µm
Nominal Cable Diameter	Zip twin: 2.8 x 5.6mm Mini zip twin 1.8 x 3.6mm
Nominal Weight (kg/km)	Zip twin: 14; mini zip twin: 6
Installation Tension	Zip twin: 300N; mini zip twin: 200N
Min. Installation Bend Radius	Zip twin: 140mm Mini zip twin: 90mm
Static Bend Radius	Zip twin: 90mm Mini zip twin: 60mm
LSZH Jacket Conforms to	IEC 60332-1, IEC 61034 and IEC 60754

Ordering Information	
Product Description	Part Number
Starlight™ Zip Twin 900um Buffered	
9/125 OS1 (Yellow)	002-001-002-12
62.5/125 OM1 (Grey)	002-001-002-10
50/125 OM2 (Orange)	002-001-002-08
50/125 OM3 (Orange)	002-001-002-04
50/125 OM3 550 (Aqua)	002-001-002-67
Starlight™ Mini Zip Twin 600um Buffered	
9/125 OS1 (Yellow)	002-001-002-42
62.5/125 OM1 (Grey)	002-001-002-02
50/125 OM2 (Orange)	002-001-002-03
50/125 OM3 (Orange)	002-001-002-05
50/125 OM3 550 (Aqua)	002-001-002-68



Fibre Cabling and Solutions

Tight Buffered Distribution Cable

The Fibre Fox Multi-purpose Tight Buffered Distribution Cable provides a cost effective solution to all internal /external datacomms cabling requirements, particularly where on-site direct connections are the preferred termination technique.

The cable consists of individually colour coded 900µm secondary coated fibres, embedded in an E-glass yarn, and oversheathed with a single Low Smoke Zero Halogen (LSZH) outer jacket. The jacket is flame retardant, UV stabilised and extremely resistant to the ingress of moisture. A choice of multimode and singlemode fibre types and specifications are offered, with fibre counts from two to twenty four in the standard range.

Their small diameter, lightweight and excellent environmental performance makes these cables ideal for installation in a broad range of network applications including LAN backbones, networks with mixed indoor and outdoor cabling, outdoor in flooded ducts and any premises distribution system.

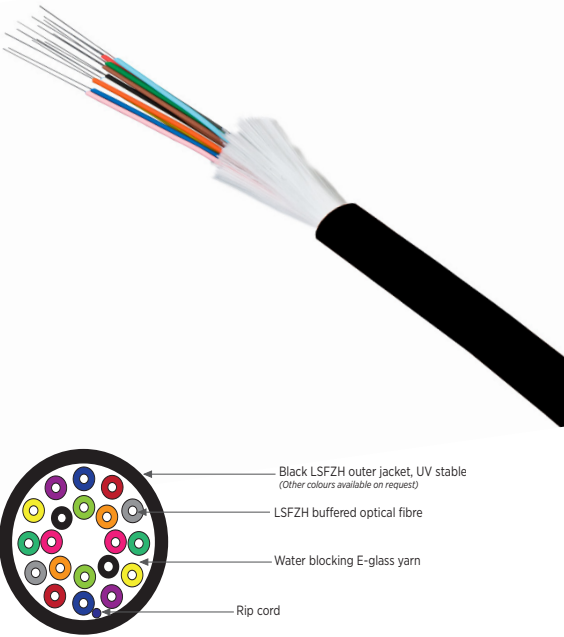
Features & Benefits
<ul style="list-style-type: none">• Fire retardant LSZH jacket• Up to 24 fibres• Choice of fibre type and specification• Small diameter• Water and UV resistant• Internal or external use• Easy to handle• Small bending radius• Low cost

Specifications						
Jacket Material	Black LSZH					
Crush Resistance	1000 N/100mm ²					
Min. Bend Radius	10 x cable diameter					
Min. Bend Radius (Load)	20 x cable diameter					
Temperature Range	-20°C to + 70°C					
Number of Fibres	4	8	12	16	24	
Cable Outer Diameter (+/- 0.2mm)	5.0	6.2	6.8	7.2	8.0	
Outer Jacket Thickness (mm)	1.0	1.0	1.05	1.1	1.15	
LSZH Jacket Conforms to	IEC 60332-1, IEC 61034 and IEC 60754					

Ordering Information	
Product Description	Part Number
Tight Buffered OS2 9/125 (Black)	002-005-011-XX
Tight Buffered OM1 62.5/125 (Black)	002-005-005-XX
Tight Buffered OM2 50/125 (Black)	002-005-006-XX
Tight Buffered OM3 50/125 (Black)	002-005-004-XX
Tight Buffered OM4 50/125 (Black)	002-005-009-XX

XX = Number of Fibres

Free Cut to Length Service
Connectix hold extensive stock of multi purpose tight buffered distribution cables. We offer a fast turnaround cut to length service providing lengths to your exact requirements. This service is free of charge, and all orders from stock can be available for next day delivery.



Fibre Cabling and Solutions

Uni-loose Tube Distribution Cable

The Fibre Fox Multi-purpose Uni-loose Tube Distribution Cable provides a cost effective solution to all internal or external datacomms cabling requirements, particularly where on-site fusion splicing of pigtails is the preferred termination technique.

The cable consists of a single central gel filled uni-tube containing individually colour coded 250µm buffered fibres. This tube is embedded in a water blocking E-glass yarn, and over sheathed with an FRNC/LSZH (Low Smoke Zero Halogen) outer jacket. The jacket is flame retardant, UV stabilised and extremely resistant to the ingress of moisture.

A choice of multimode and singlemode fibre types and specifications are offered with fibre counts from four to twenty four in the standard range. The very small diameter, lightweight and excellent environmental performance makes the cable ideal for installation in a broad range of network applications including LAN backbones, networks with mixed indoor and outdoor cabling, outdoor in flooded ducts and any premises distribution system.

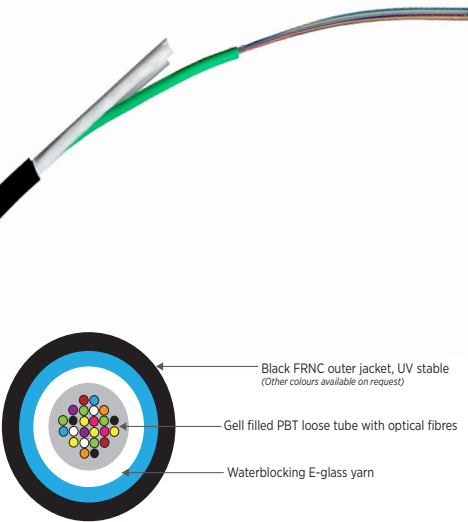
Ordering Information	
Product Description	Part Number
Loose Tube OS2 9/125 (Black)	002-005-010-XX
Loose Tube OM1 62.5/125 (Black)	002-005-005-XX
Loose Tube OM2 50/125 (Black)	002-005-006-XX
Loose Tube OM3 50/125 (Black)	002-005-004-XX
Loose Tube OM4 50/125 (Black)	002-005-009-XX

XX = Number of Fibres

Features & Benefits
<ul style="list-style-type: none">• Fire retardant FRNC/LSZH jacket• Small diameter• Water and UV resistant• Internal or external use• Small bending radius• Low cost• Steel tape armoured version available

Specifications	
Jacket Material	Black FRNC/LSZH
Max. Tensile Strength	1100 N
Crush Resistance	2000 N/10cm
Impact Resistance	3 impacts (w/20N.m)
Min. Bend Radius	15 x cable diameter
Min. Bend Radius (Load)	20 x cable diameter
Moisture Resistance	Passed
Temperature Range	Installation: -5°C to +50°C Operation: -20°C to +70°C Storage: -30°C to +70°C
Nominal Weight	49 kg/km
Standard Put-up Length	2100m, 4100m
Loose Tube Diameter	3.0mm
Outer Jacket Thickness	1.3 +/- 0.3mm
Cable Outer Diameter	6.4 +/- 0.5mm
Conforms to	IEC 60332-1, IEC 61034 and IEC 60754

Free Cut to Length Service
Connectix hold extensive stock of multi purpose tight buffered distribution cables. We offer a fast turnaround cut to length service providing lengths to your exact requirements. This service is free of charge, and all orders from stock can be available for next day delivery.



Fibre Cabling and Solutions

Uni Tube Corrugated Steel Armoured Cable

The Fibre Fox Uni Tube Steel Tape Armoured Cable is suitable for installation in the most demanding, harsh environments. The cable has excellent tensile strength, crush resistance characteristics and is also rodent proof. The cable consists of a central jelly filled tube, with up to twenty four optical fibres inside.

The tube is protected with a waterblocking glass yarn and a thick inner corrugated steel tape armour is then applied. A black FRNC/LSZH outer sheath then protects the cable construction and is extremely resistant to the ingress of moisture. A choice of multimode and singlemode fibre types and specifications are offered ranging from 2, up to 24 fibre configurations. This tough rugged cable is ideal for all external environments including LAN direct burial, tunnels and heavy-duty ducts.

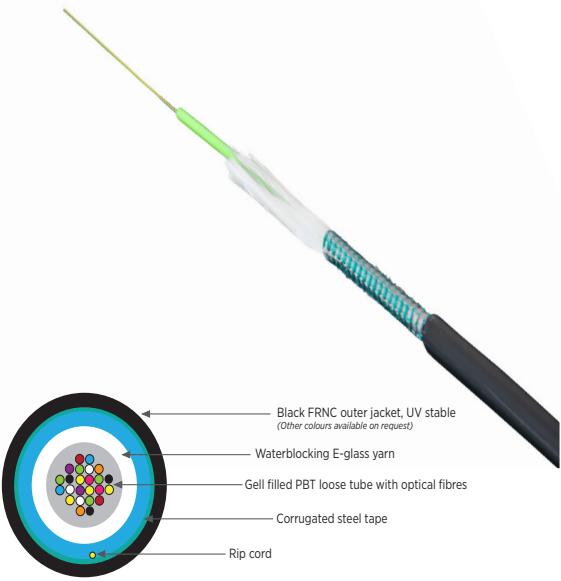
Features & Benefits
<ul style="list-style-type: none">• 2 to 24 fibre configurations• Choice of fibre type and specification• Rodent proof• Water resistant• High tensile strength and crush resistant• Corrugated Steel Armouring tape• Suitable for harsh external environments• Low cost• 50/125, 62.5/125 & singlemode fibre types

Ordering Information	
Product Description	Part Number
Uni Tube CST OS2 9/125 (Black)	002-005-014-XX
Uni Tube CST OM1 62.5/125 (Black)	002-005-008-XX
Uni Tube CST OM2 50/125 (Black)	002-005-007-XX
Uni Tube CST OM3 50/125 (Black)	002-005-040-XX
Uni Tube CST OM4 50/125 (Black)	002-005-009-XX

XX = Number of Fibres

Specifications	
Jacket Material	Black FRNC/LSZH
Max. Tensile Strength	1100 N
Crush Resistance	6000 N/10cm
Impact Resistance	3 impacts (w/25N.m)
Min. Bend Radius	15 x cable diameter
Min. Bend Radius (Load)	20 x cable diameter
Moisture Resistance	Passed
Compound Flow	30cm / 24hr / 70°C passed
Temperature Range	Installation: -15°C to +50°C Operation: -20°C to +60°C Storage: -30°C to +70°C
Standard Put-up Length	2100m, 4100m
Nominal Weight	87 kg/km
Loose Tube Diameter	3.0mm
Outer Jacket Thickness	1.3 +/- 0.2mm
Cable Outer Diameter	7.9 +/- 0.4mm
Conforms to	IEC 60332-1, IEC 61034 and IEC 60754

Free Cut to Length Service
Connectix hold extensive stock of multi purpose tight buffered distribution cables. We offer a fast turnaround cut to length service providing lengths to your exact requirements. This service is free of charge, and all orders from stock can be available for next day delivery.



Fibre Cabling and Solutions

GRP Armoured Cable

Fibre Fox GRP armoured cables consist of one tube containing up to 24 optical fibres or multiple tubes each containing up to 12 optical fibres. GRP crush resistant rods encircle the loose tube, providing significant extra strength and resistance to rodents, then a PE sheath is applied.

Features & Benefits

- The GRP rods provide rodent protection along with excellent crush and impact resistance
- Maximum protection through use of GRP for all rods, without any fillers
- Installation tension up to 6000N
- Suitable for direct burial
- Improved abrasion resistance
- Totally non-metallic
- Standard black LDPE sheath for protection against UV radiation
- Longitudinal and lateral waterblocking
- Interstitial dry waterblocking as standard in multitubes
- Fibres colour coded according to TIA/EIA-598, for easy identification

Applications

Wherever extra high strength is required. Ideal for direct burial in the ground and other external applications where higher protection is required. Also applicable for installation in ducts and for other external requirements, e.g. structured wiring systems in networks for telecoms, cable TV and broadcasting. Its nonmetallic core permits installation in high voltage environments. Suitable for short span aerial applications.

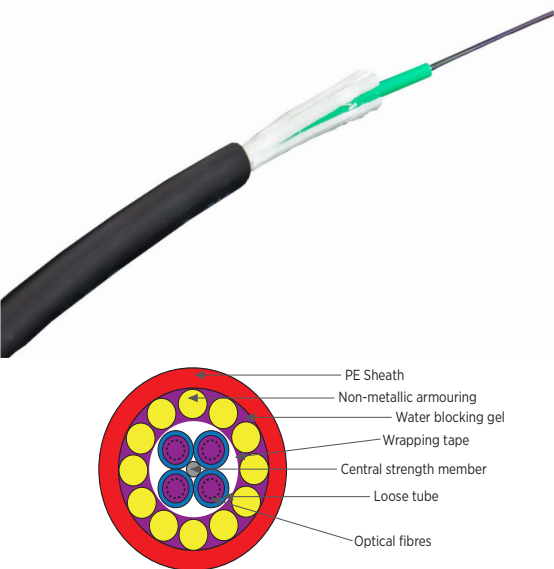
Specifications

Temperature Range 2-24 Fibre				
- Transport/Storage				-20°C to +70°C
- Installation				-5°C to +50°C
- Operation				-20°C to +70°C
Temperature Range 36-72 Fibre				
- Transport/Storage				-30°C to +70°C
- Installation				-5°C to +50°C
- Operation				-30°C to +70°C
Cable Type	2-16f	24f	36-48f	60-72f
No. of Tubes/Filters	1	1	4	6
Nominal Cable Diameter	9 mm	11 mm	15 mm	16.7 mm
Nominal Weight (kg/km)	72	103	183	206
Installation Tension (N)	2000	3000	6000	6000
Min. Installation Bend Radius (mm)	230	280	465	520
Static Bend Radius (mm)	175	210	350	390
Crush Resistance (N)	2000	2000	4000	4000

Ordering Information

Product Description	Part Number
9/125 OS1 Black	002-005-035-XX
62.5/125 OM1 Black	002-005-036-XX
50/125 OM2 Black	002-005-037-XX
50/125 OM3 Black	002-005-038-XX
50/125 OM3 550 Black	002-005-039-XX

XX = Number of Fibres



Fibre Cabling and Solutions

SWA Uni Tube Fibre Cable

Fibre Fox SWA Uni Tube Cable is suitable for direct burial installations making it the perfect solution for the most demanding and harsh environments. The SWA cable has excellent tensile strength and the layer of 0.9mm steel wire provides safe rodent protection. The cable core consists of a central jelly filled polyester tube with up to 24 optical fibres contained within. The tube is protected with a water blocking E-glass yarn and a black LDPE, UV stable inner jacket plus a layer of 0.9mm steel wire armouring. All of which is surrounded by a 1.5mm thick black FRNC/LSZH sheath which protects the cable and construction and is extremely resistant to the ingress of moisture.

A choice of multimode and singlemode fibre types and specifications are offered ranging from 4 up to 24 fibre configurations. This tough rugged cable is ideal for all external environments including direct burial, tunnels and heavyduty ducts.

Features & Benefits

- 4 to 24 fibre configuration
- Suitable for indoor and outdoor usage
- Waterproof
- Rodent proof
- Cables have a LSZH flame retardant sheath
- Suitable for direct burial
- Available in 50/125, 62.5/125 and singlemode fibre types

Specifications

Jacket Material	Black FRNC/LSZH
Max. Tensile Strength	4000 N
Crush Resistance	4000 N/10cm
Impact Resistance	3 impacts (w/30N.m)
Min. Bend Radius	15 x cable diameter
Min. Bend Radius (Load)	20 x cable diameter
Moisture Resistance	Passed
Compound Flow	30cm / 24hr / 70°C passed
Temperature Range	Installation: -15°C to +50°C Operation: -20°C to +70°C Storage: -30°C to +70°C
Standard Put-up Length	2100m
Nominal Weight	180 kg/km
Loose Tube Diameter	3.0mm
Inner Jacket Thickness	1.0 +/- 0.2mm
Outer Jacket Thickness	1.4 +/- 0.3mm
Cable Outer Diameter	10.7 +/- 0.4mm
Conforms to	IEC 60332-1, IEC 61034 and IEC 60754

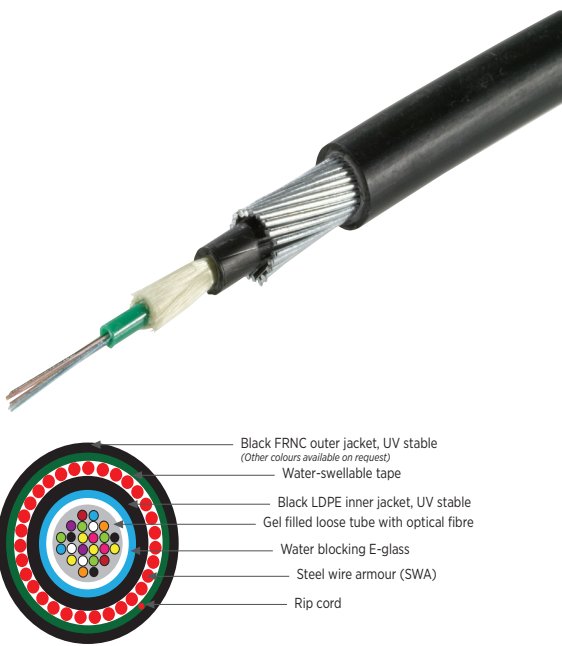
Free Cut to Length Service

Connectix hold extensive stock of multi purpose tight buffered distribution cables. We offer a fast turnaround cut to length service providing lengths to your exact requirements. This service is free of charge, and all orders from stock can be available for next day delivery.

Ordering Information

Product Description	Part Number
Uni Tube SWA LSZH OS2 9/125 (Black)	002-005-025-XX
Uni Tube SWA LSZH OM1 62.5/125 (Black)	002-005-027-XX
Uni Tube SWA LSZH OM2 50/125 (Black)	002-005-026-XX
Uni Tube SWA LSZH OM3 50/125 (Black)	002-005-004-XX
Uni Tube SWA LSZH OM4 50/125 (Black)	002-005-009-XX

XX = Number of Fibres

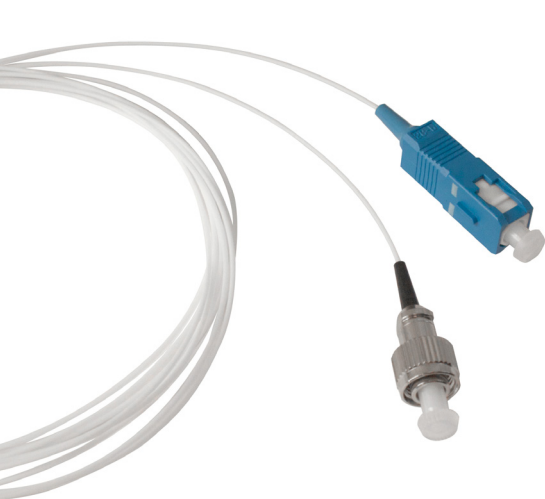


Fibre Cabling and Solutions

Fibre Optic Pigtails

Fibre Fox fibre optic pigtails are typically used to link the fibre optic cable with fibre optic equipment. The connector side of the pigtail is used to link the equipment, while the other side is fusion spliced together with the fibre cable. By splicing together the fibre glasses, it can reach a minimum insertion loss.

We are committed to holding extensive stock of many assembly types in all common lengths. This allows us to provide a same day despatch service on most small or medium volume orders.



Features & Benefits

- LC, SC, ST and FC available from stock
- E2000, ESCON, FDDI, MU & MTRJ available within minimal time-frame
- Individually bagged with individual test certificates
- Can be labelled and packaged to your requirements

Multimode Connector Specifications

Length	1.0m +/- 10mm. Other lengths available to order
Sheath Colour	White/Orange/Aqua. Other colours available to order
Fire Performance	LSZH applications flame resistance IEC 60332-1
Connector Specification	
Ferrule Material	Full zirconia
Insertion Loss	Max. 0.3dB typical 0.2dB
Operating Temperature	-40°C to +85°C

Singlemode Connector Specifications

Fibre Type	900um tight buffered
Length	1.0m +/- 10mm. Other lengths available to order
Sheath Colour	Yellow. Other colours available to order
Fire Performance	LSZH applications flame resistance IEC 60332-1
Connector Specification	
Compliant with IEC 874-14	
Ferrule Material	Full zirconia
Insertion Loss	Max. 0.3dB typical 0.2dB
Return Loss	UPC>50dB, APC > 60dB
Operating Temperature	-40°C to +85°C

Ordering Information

Product Description	Part Number
LC Pigtail 62.5/125 1 Metre	005-102-010-01B
SC Pigtail 62.5/125 1 Metre	005-107-010-01B
ST Pigtail 62.5/125 1 Metre	005-101-010-01B
LC Pigtail 50/125 1 Metre	005-422-010-01B
SC Pigtail 50/125 1 Metre	005-407-010-01B
ST Pigtail 50/125 1 Metre	005-401-010-01B
LC Pigtail OM3 1 Metre	005-424-010-01B
SC Pigtail OM3 1 Metre	005-420-010-01B
ST Pigtail OM3 1 Metre	005-421-010-01B
LC Pigtail OM4 1 Metre	005-417-010-01B
LC/PC Singlemode Pigtail 1 Metre	005-710-010-01B
SC/PC Singlemode Pigtail 1 Metre	005-707-010-01B
ST/PC Singlemode Pigtail 1 Metre	005-701-010-01B

Fibre Cabling and Solutions

Patch Leads

Fibre Fox patch leads are manufactured in-house, are 100% tested and certified and surpass the high standards required for datacomms and CATV applications. They are available in multimode OM1 62.5/125, OM2 50/125, OM3 50/125, OM4 50/125 and singlemode OS1 9/125 ruggedised cable.

The leads are manufactured in our advanced fibre termination facility under stringently controlled quality conditions. Our termination facility is one of the largest in the UK providing a high volume and fast turnaround service for all types of multimode and singlemode terminations.

Ordering Information

Product Description	Part Number
Multimode OM1 62.5/125 Patch Lead (1 metre)	
LC to LC Duplex	005-324-010-01B
LC to SC Duplex	005-322-010-01B
LC to ST Duplex	005-323-010-01B
SC to SC Duplex	005-307-010-01B
SC to ST Duplex	005-308-010-01B
Multimode OM2 50/125 Patch Lead (1 metre)	
LC to LC Duplex	005-624-010-01B
LC to SC Duplex	005-622-010-01B
LC to ST Duplex	005-623-010-01B
SC to SC Duplex	005-607-010-01B
SC to ST Duplex	005-608-010-01B
Multimode OM3 50/125 Patch Lead (1 metre)	
LC to LC Duplex	005-634-010-01B
LC to SC Duplex	005-629-010-01B
LC to ST Duplex	005-635-010-01B
SC to SC Duplex	005-633-010-01B
SC to ST Duplex	005-648-010-01B
Singlemode OS1 9/125 Patch Lead (1 metre)	
LC to LC Duplex	005-924-010-01B
LC to SC Duplex	005-922-010-01B
LC to ST Duplex	055-923-010-01B
SC to SC Duplex	005-907-010-01B
SC to ST Duplex	005-908-010-01B
SC to FC Duplex	005-911-010-01
FC to FC Duplex	005-914-010-01
LC to FC Duplex	005-926-010-01
Multimode OM4 50/125 Patch Lead (1 metre)	
LC to LC Duplex	005-662-010-01
LC to SC Duplex	005-668-010-01
SC to SC Duplex	005-669-010-01

Features & Benefits

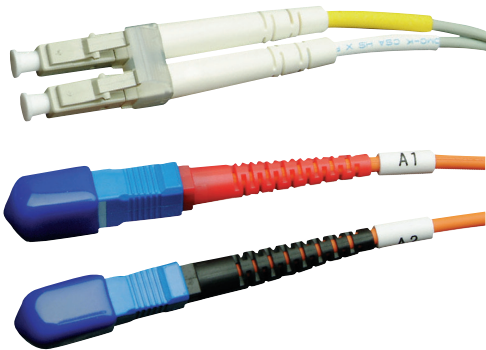
- LC, SC and ST connector leads available
- 100% tested and certified
- Singlemode and multimode cable
- OM1, OM2, OM3 OM4 and OS1 cable
- Terminated under quality controlled conditions
- 1m to 5m lengths available from stock

Multimode Connector Specifications

Connector Specification	Compliant with IEC 874-14
Ferrule Material	Full zirconia
Insertion Loss	Max. 0.3dB typical 0.2dB
Operating Temperature	-40°C to +85°C

Singlemode Connector Specifications

Connector Specification	Compliant with IEC 874-14
Ferrule Material	Full zirconia
Insertion Loss	Max. 0.3dB typical 0.2dB
Return Loss	UPC>50dB, APC > 60dB
Operating Temperature	-40°C to +85°C



Fibre Cabling and Solutions

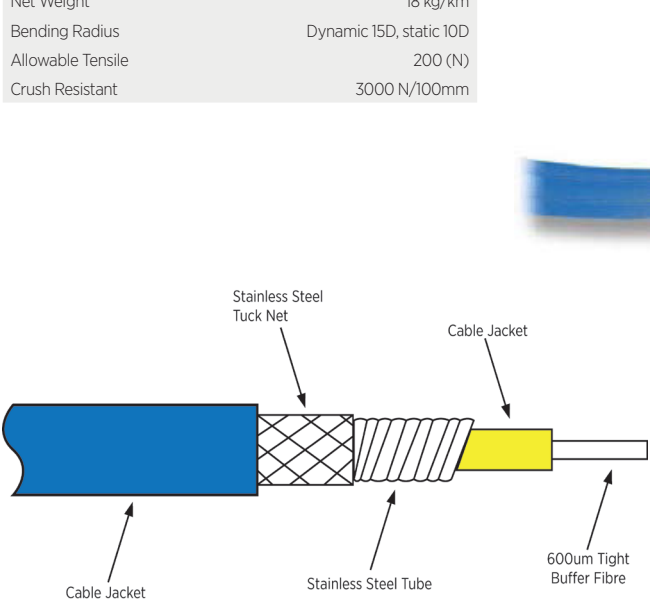
Armoured Patch Cords

Fibre Fox Armoured patchcords are used in areas or applications where additional safeguards are required to ensure added cable protection. The Stainless Steel Armour construction is designed to provide strength, but remains flexible enough for interconnection and routing.

Features & Benefits	
• Good mechanical property and environment property	
• Flame resistant performance	
• Soft, agility, convenience for connection	
• Singlemode and Multimode available	

Multimode Connector Specifications	
Core/Mode Diameter	50+/-2.5um / 62.5+/-2.5um
Cladding Diameter	125+/- um
Max. Attenuation	3.5dB/km@850nm / 1.5dB/km@1300nm
Operation Temperature	-20°C to +70°C
Outer Diameter	2.85+/- 0.10mm
Net Weight	18 kg/km
Bending Radius	Dynamic 15D, static 10D
Allowable Tensile	200 (N)
Crush Resistant	3000 N/100mm

Singlemode Connector Specifications	
Core/Mode Diameter	9.2+/-0.4um@1310nm / 10.4+/-0.8um@1550nm
Cladding Diameter	125+/-1um
Max. Attenuation	0.5dB/km@1310nm / 0.4dB/km@1550nm
Operating Temperature	-20°C to +70°C
Outer Diameter	2.85+/- 0.10mm
Net Weight	18 kg/km
Bending Radius	Dynamic 15D, static 10D
Allowable Tensile	200 (N)
Crush Resistant	3000 N/100mm



Fibre Cabling and Solutions

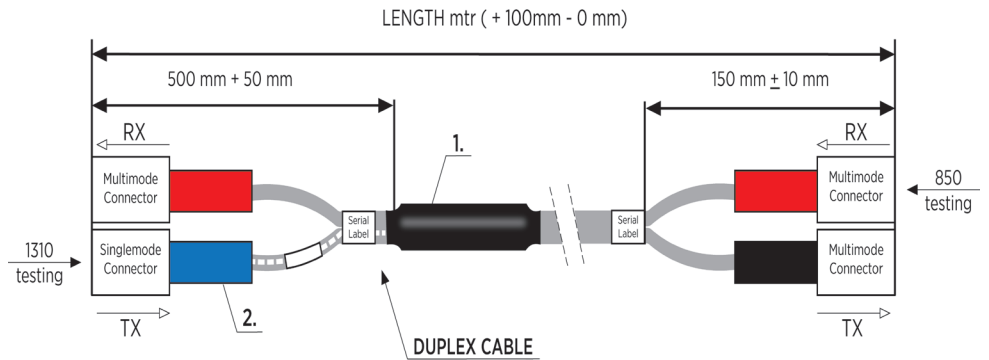
Mode Conditioned Patch Lead

Mode conditioning patch cords are designed for long wave Gigabit Ethernet (1310nm/1000 base-LX) network applications where both single mode and multi mode interconnects are required. The connection between the MM and SM fibre is slightly offset; resulting in the mode conditioning patch cord removing transmission-distance limiting Differential Mode Delay (DMD) that is present in MM fibre.

Features & Benefits	
• Connector options: E2000, FC, LC, MTRJ, SC and ST.	
• Stable and permanent core offset	
• Low-loss connections	
• Solution to DMD effects	

Ordering Information	
Product Description	Part Number
CSM-MODECLIP	Mode Conditioned Clip
Connectix-45M-M	45mm Splice Protector (without bar)
CSM-006	Heat Shrink 254 (80mm)

Specifications	
Insertion Loss:	< 0.5 dB
Singlemode @ 1310nm	< 0.5 dB
Multimode @ 850nm	Duplex 62.5/125 or 50/125
	1.8mm or 2.8mm LSZH
Cable Type:	Simplex 900um or 650um
	9/125 threaded into singlemode connector leg
Testing	In accordance with Insertion Loss and test version 1
Conforms to	IEC 60332-1, IEC 61034 and IEC 60754



Fibre Cabling and Solutions

XP Fit Plus Field Assembly Connectors

The XP Fit Plus Connectors are a pre-polished, preassembled, non-epoxy fibre connector compatible with standard SC and LC connectors. Without polishing or adhesives, the XP Fit Plus makes terminating faster and easier, with a typical connection time of less than two minutes. The XP Fit Plus comes with an assembly jig and fibre holder for 250µm and 900µm tight buffered fibre, making for an accurate alignment and fibre cleave when terminating.

Following the guides on the assembly jig and fibre holder, the assembly is effortless. Once the fibre is pushed into the connector and a click is heard, the job is complete and the connector is ready to use in CATV, telecommunication networks, multimedia, and some FTTX applications.

Features & Benefits	
<ul style="list-style-type: none">• Compatible with conventional LC/SC connectors• Quick assembly in under 2 minutes• No adhesive or polishing required• Compact tool without electric power• Same environmental endurance as conventional LC/SC connector• Exceeds TIA/EIA-568-B.3 standards	

Specifications		
	Singlemode	Multimode
Coating Diameter	250µm and 900µm	900µm
Polishing	SPC	PC
Insertion Loss	≤ 0.5 dB (Average 0.2 dB)	≤ 0.3 dB (Average 0.1 dB)
Return Loss	≥ 40 dB	≥ 22 dB



Termination Kit Contents	
Jacket and 250µm Fibre stripper + 125µm buffer remover, thermal buffer removal tool, replacement blade set, precision cleave tool, lint free dry wipes, fibre optic cleaning pen, Kevlar scissors, fibre disposal unit, fine permanent marker pen, fibre checker, 2.5mm to 1.25mm adaptor - all comes in a light, soft carry case.	

Ordering Information	
Product Description	Part Number
XP Fit Plus, LC Connector Singlemode Blue, 900µm 9/125	004-001-008-45
XP Fit Plus, LC Connector Multimode Black, 900µm 50/125	004-001-008-50
XP Fit Plus, LC Connector Multimode Beige, 900µm 62.5/125	004-001-008-51
XP Fit Plus, LC Connector Multimode Aqua, 900µm 50/125, 10G, OM3	004-001-008-52
XP Fit Plus, SC Connector Singlemode Blue, 900µm 9/125	004-001-008-40
XP Fit Plus, SC Connector Multimode Black, 900µm 50/125	004-001-008-36
XP Fit Plus, SC Connector Multimode Beige, 900µm 62.5/125	004-001-008-35
XP Fit Plus, SC Connector Multimode Aqua, 900µm 50/125, 10G, OM3	004-001-008-37
XP Fit Plus Termination Tool Kit	00A-011-001-20

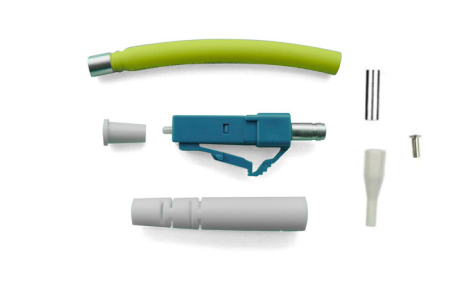
Fibre Cabling and Solutions

LC Connectors & Adaptors

The LC connectors and adaptors set the standard for small optical fibre interconnects. With its simple to use latched lever locking mechanism preventing accidental disconnection and precision housing for optimum performance. The LC was also the first Small Form Factor (SFF) connector set available and offers fibre density and performance unheard of before now.

The LC connector uses a 1.25mm ferrule, half the size of the ST. Otherwise, it is a standard ceramic ferrule connector and its good performance makes it highly favoured for singlemode terminations.

LC connectors are available in both multimode and singlemode and the one-piece design features preradiused ceramic ferrules. Suitable for use with two part heat curing epoxies and cold cure anaerobic adhesives.



Ordering Information	
Product Description	Part Number
LC SX Plug SM Pigtail Blue Body - White Boot	FFLC1
LC SX Plug SM 2mm Blue Body - Blue Boot	FFLC2BL
LC SX Plug SM 2mm Blue Body - Red Boot	FFLC2RE
LC DX Plug SM 2mm Blue Body - White Boot	FFLC9
LC DX Plug SM 3mm Blue Body - Blue Boot	FFLC10
LC SX Plug MM Pigtail Aqua Body - White Boot	FFLC5
LC SX Plug MM 2mm Aqua Body - White Boot	FFLC12
LC DX Plug MM 2mm Aqua Body - White Boot	FFLC6
LC DX Plug MM 3mm Aqua Body - Red & Black Boots	FFLC11
LC DX SM Adaptor Blue - Ceramic Sleeve	FFLC37
LC Quad SM Adaptor Blue - Ceramic Sleeve	FFLC45
LC DX MM Adaptor Beige - Ceramic Sleeve	FFLC34
LC DX MM Adaptor Aqua - Ceramic Sleeve	FFLC40
LC Quad MM Adaptor Aqua - Ceramic Sleeve	FFLC49

Specifications	
LC Connector	
Versions Available	2.0 & 3.0mm patch, 900µm simplex & duplex
Colour	Singlemode: blue Multimode: beige
Singlemode	Insertion loss: max. 0.3 dB, typical 0.2 dB Return loss: UPC > 50 dB, typical 55 dB APC > 60 dB, typical 65 dB
Multimode	Insertion loss: max. 0.3 dB, typical 0.12 dB
Mechanical Capillary Diameter	126 +1/-0µm
Ferrule Diameter	1.25mm ± .001
	Pre-radiused, PC-end finish for PC ferrule to ferrule. R 10 to 25mm
Vibration (Mated Pair)	10-55 Hz 1.5mm P to P =0.3 dB change (IEC 61300-2-1)
Mating Durability	1000 mating cycles - clean every 25 < 0.2 dB change (IEC 61300-2-2)
High Temperature	75°C for 96 hours =0.2 dB change (IEC 61300-2-18)
Damp Heat	60°C at 95% RH 96 hours =0.2 dB change (IEC 61300-2-19)
Temperature Cycling	-40 to +85°C 42 cycles =0.2 dB change (IEC 61300-2-48)
Operating Temperature	-40°C to +85°C
LC Adaptor	
Insertion Loss	<0.20 dB
Durability	<0.20 dB typical change 1000 matings
Operating Temperature	-40 to + 85°C

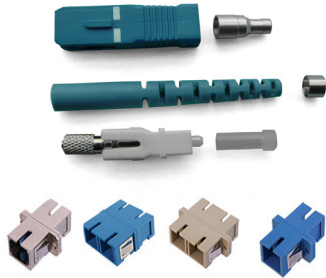
Fibre Cabling and Solutions

SC Connectors & Adaptors

The SC connector is one of the most popular connectors used today. It can be seen in every area of the communications environment, from a telecoms distribution room to a Local Area Network closet. The SC connector has set the standard for optical fibre connectors. SC connectors are manufactured using the best quality components and they exceed all areas of the standards covering optical fibre connectors.

The one-piece design features pre-radiused ceramic ferrules, and are suitable for use with two part heat curing epoxies and cold cure anaerobic adhesives. Available with both 900um boots for pigtail termination or 3.0mm crimp ring & boot for patch cord production. Simplex and duplex versions available (duplex version uses two simplex connectors with a clip to be coupled as required). Generally there are two types of alignment sleeve within an adaptor; phosphor bronze for multimode or zirconia (ceramic) for singlemode.

Specifications	
SC Connector	
Versions Available	2mm & 3mm patch, 900µm
Colours	2mm & 3mm boot: blue, red, black, green 900µm boot: blue
Termination Procedure	Epoxy-crimp-polish
Standard Packaging	100pcs bulk packed
Singlemode	Insertion loss: max. 0.3 dB, typical 0.2 dB
	Return loss: UPC > 50 dB, typical 55 dB
	APC > 60 dB, typical 65 dB
Multimode	Insertion loss: max. 0.3 dB, typical 0.12 dB (IEC 874-1 method)
Capillary Diameter	SM: 126 ± 0.5µm
Tolerance	MM: 127 +/- 0.5µm
Ferrule Diameter	2.5mm ± .001
Vibration (Mated Pair)	Pre-radiused, PC-end finish for PC ferrule to ferrule. R 10 to 25mm
	10-55 Hz, 1.5mm P to P =0.3 dB change (IEC 61300-2-1)
Mating Durability	1000 mating cycles - clean every 25
	< 0.2 dB change (IEC 61300-2-2)
High Temperature	75°C for 96 hours
	=0.2 dB change (IEC 61300-2-18)
Damp Heat	60°C at 95% RH, 96 hours
	=0.2 dB change (IEC 61300-2-19)
Temperature Cycling	-40 to +75°C, 40 cycles
	=0.2 dB change (IEC 61300-2-48)
Operating Temperature	-40°C to +85°C
SC Adaptor	
Insertion Loss	<0.20 dB
Durability	<0.20 dB typical change 1000 matings
Operating	Temperature -40 to + 85°C



Ordering Information	
Product Description	Part Number
SC SX Plug SM 900um Blue Body - Blue Boot	FFSC3
SC/APC SX Plug SM 900um Green Body - Green Boot	FFSC6
SC SX Plug SM 2mm Blue Body - Red Boot	FFSC6RE
SC SX Plug SM 2mm Blue Body - Blue Boot	FFSC6BL
SC SX Plug SM 3mm Blue Body - Blue Boot	FFSC2BL
SC/APC SX Plug SM 3mm Green Body - Green Boot	FFSC10
SC SX Plug MM 900um Pigtail Beige Body - Beige Boot	FFSC3B
SC SX Plug MM 2mm Beige Body - Beige Boot	FFSC1
SC DX Plug MM 2mm Beige Body - Beige Boot	FFSC2
SC SX Plug MM 3mm Beige Body - Beige Boot	FFSC1BE
SC SX SM Adaptor Blue - Ceramic Sleeve	FFSC15
SC DX SM Adaptor Blue - Ceramic Sleeve	FFSC19
SC SX MM Adaptor Beige - Ceramic Sleeve	FFSC16
SC DX MM Adaptor Aqua - Ceramic Sleeve	FFSC18
SC DX MM Adaptor Beige - Ceramic Sleeve	FFSC20

Fibre Cabling and Solutions

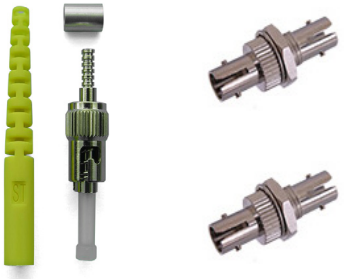
ST Connectors & Adaptors

The ST Connector has been the mainstay of optical fibre connectors for many years. It can be found in almost every communications room worldwide, but used mainly in data communications systems.

The ST optical fibre connector comprises of a nickel plated brass body and a ceramic ferrule/spring/crimp barrel assembly plus a crimp over sleeve and rubber boot. These connectors are suitable for 900µm and 2-3mm cables. The connector is precision made and manufactured to demanding specifications.

Connectors are suitable for use with two part heat curing epoxies and cold cure anaerobic adhesives. The ST adaptor set the standard for optical fibre interconnects. With its simple to use bayonet locking mechanism, it preventing accidental disconnection. With the precision housing this adaptor gives the very best performance. Generally there are two types of alignment sleeve within an adaptor; phosphor bronze for multimode or zirconia (ceramic) for singlemode.

Specifications	
Versions Available	2mm & 3mm patch, 900µm
Colours	2mm & 3mm boot: black, red, blue, yellow 900µm boot: black, blue, yellow
Termination Procedures	Epoxy-crimp-polish
Standard Packaging	100pcs bulk packed
Singlemode	Insertion loss: max. 0.3 dB, typical 0.2 dB
	Return loss: UPC > 50 dB, typical 55 dB
	APC > 60 dB, typical 65 dB
Multimode	Insertion loss: max. 0.3 dB, typical 0.12 dB (IEC 874-1 method)
Capillary Diameter	SM: 126 ± 0.5µm
Tolerance	MM: 127 +/- 0.5µm
Ferrule Diameter	2.5mm ± .001
Vibration (Mated Pair)	Pre-radiused, PC-end finish for PC ferrule to ferrule. R 10 to 25mm
	10-55 Hz, 1.5mm P to P =0.3 dB change (IEC 61300-2-1)
Mating Durability	1000 mating cycles - clean every 25
	< 0.2 dB change (IEC 61300-2-2)
High Temperature	75°C for 96 hours
	=0.2 dB change (IEC 61300-2-18)
Damp Heat	60°C at 95% RH, 96 hours
	=0.2 dB change (IEC 61300-2-19)
Temperature Cycling	-40 to +75°C, 40 cycles
	=0.2 dB change (IEC 61300-2-48)
Operating Temperature	-40°C to +85°C
ST Adaptor	
Insertion Loss	<0.20 dB
Durability	<0.20 dB typical change 1000 matings
Operating Temperature	-40 to + 85°C



Features & Benefits	
<ul style="list-style-type: none">• Low insertion loss and back reflection loss• High precision alignment• Telcordia, ANSI, TIA/EIA, NTT and JIS compliance• Compact design• Choice of housing material and sleeve material• Nickel / plastic	

Ordering Information	
Product Description	Part Number
ST SX Plug SM 0.9mm Yellow Cap - Blue Boot	FFST2
ST SX Plug SM 3mm Clear Cap - Yellow Boot	FFST10
ST SX Plug MM 0.9mm Red Cap - Black Boot	FFST1
ST SX Plug MM 3mm Clear Cap - Black Boot	FFST3BK
ST SM Adaptor Ceramic - Yellow Caps	FFST4
ST MM Adaptor Ceramic - Black Caps	FFST3

Fibre Cabling and Solutions

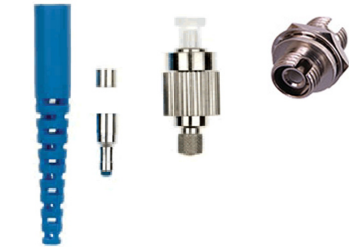
FC Connectors & Adaptors

The FC Connector is used extensively in the telecommunications market, where long singlemode optical fibre cables can run upwards of 50km. In these extreme situations the connector needs to have extremely low loss and accurate geometry.

The FC Optical Fibre Connector comprises of a nickel plated brass body and a ceramic ferrule/spring/crimp barrel assembly plus a crimp over sleeve and rubber boot. These connectors are suitable for 900µm and 2 and 3mm cables. The connector is precision made and manufactured to demanding specifications. The combination of a ceramic ferrule and a precision nickel plated brass housing provides consistent long-term mechanical and optical performance.

Connectors are available in both multimode and singlemode options. One piece design features preradiused ceramic ferrules. Suitable for use with two part heat curing epoxies and cold cure anaerobic adhesives. Generally there are two types of alignment sleeve within an adaptor; phosphor bronze for multimode or zirconia (ceramic) for singlemode. The FC connector and adaptor set are mainly used for singlemode applications where precision is required. With its simple to use locking thread mechanism preventing accidental disconnection, this provides a very secure connection.

Specifications	
FC Connector	
Versions Available	2mm /3mm Patch, 900µm
Termination Procedures	Epoxy-crimp-polish
Standard packaging 1	00pcs bulk packed
Boot Colours	Blue, black
Singlemode Insertion Loss	Max. 0.3 dB, typical 0.2 dB
Return Loss	UPC > 50 dB, typical 55 dB APC > 60 dB, typical 65 dB
Multimode Insertion Loss	Max. 0.3 dB, typical 0.12 dB (IEC 874-1 method)
Mechanical Capillary Diameter	SM 126 ± 0.5µm MM 127 ±0.5µm ferrule diameter 2.5mm ± .001 Pre-radiused end finish for PC ferrule to ferrule, R 10 to 25mm
Vibration (Mated Pair)	10-55 Hz, 1.5mm P to P =0.3 dB change (IEC 61300-2-1)
Mating Durability	1000 mating cycles clean every 25 < 0.2 dB change (IEC 61300-2-2)
High Temperature	75°C for 96 hours =0.2 dB change (IEC 61300-2-18)
Damp Heat	60°C at 95% RH, 96 hours =0.2 dB change (IEC 61300-2-19)
Temperature Cycling	-40 to +75°C, 40 cycles =0.2 dB change (IEC 61300-2-48)
Operating Temperature	-40°C to +85°C
FC Adaptor	
Insertion Loss	<0.20 dB
Durability	<0.20 dB typical change 1000 matings
Operating Temperature	-40 to + 85°C



Features & Benefits	
<ul style="list-style-type: none">• Low insertion loss and back reflection loss• High precision alignment• NTT-FC Compatibility• Compact design• Choice of housing shape and sleeve material• Nickel plated brass body• Telcordia, ANSI, TIA/EIA, NTT and JIS compliance	

Ordering Information	
Product Description	Part Number
FC/APC SX Plug SM 900um Green Boot	FFFC6
FC SX Plug SM 1.8mm Red & Blue Boots	FFFC2
FC/PC SX Plug SM 3mm Blue Boot	FFFC3BL
FC/APC SX Plug SM 3mm Green Boot	FFFC5
FC SX SM Adaptor - Red Caps	FFFC1

Fibre Cabling and Solutions

Termination Kit & Fiberscope™

Whether termination procedures are taking place on-site or in a production facility, the Fibre Fox Termination Kit provides all the necessary equipment and consumables for manufacturing cabling assemblies and terminating cables.

The kit is supplied in a rugged carry case, resistant to demanding on-site working conditions. Fibre Fox termination kits are available from stock with replacement consumables available individually. The Fibre Fox Fiberscope™ is the ideal instrument for carrying out the necessary visual checks on a fibre optic ferrule.

Designed to be a handheld and lightweight optical microscope, the Fiberscope™ is available in four styles - 100, 200, 320 and 400 times magnification. The Fiberscope™ is manufactured with a robust metal construction, and provides a clear central focus - eliminating the need for alignment. The Fiberscope™ also includes a backlight facility, enabling the user to illuminate the fibre core and check for scratches, cracks and other impurities. A choice of universal or dedicated adaptors can be supplied.

Features & Benefits	
Termination Kit <ul style="list-style-type: none">• Supplied in rugged, durable flightcase• Everything you need in one box• Consumables can be supplied individually	
Fiberscope <ul style="list-style-type: none">• A third of the cost of industry standard microscopes• Perfect vision of ferrules• Handheld and lightweight• Includes backlight facility• Supplied ready to use• Robust metal construction	

Termination Kit Contents	
2oz cleaning solvent, 4 bit screwdriver, fibre stripper, safety glasses, PVC electrical tape, black marker, connector cleaner, 5x degreaser wipes, Kevlar scissors, 5x 60mm fusion splice sleeves, ruler, jacket stripper, black work mat, buffer tube stripper, fibre disposal unit, fabric tape measure, round cable splitter, 6" side cutting pliers, foam swabs, 1/2 nut driver, cleaning tissues, 3x economy tie labels, utility knife, tweezers, shrink tube kit, needle nose pliers, 1 m furcation (3 mm), piano wire, fibre optic wipes - all supplied in a rugged carry case.	

Ordering Information	
Product Description	Part Number
Fibre Termination Kit	00A-011-001-00
Handheld Fiberscope™	00A-010-001-00



Fibre Cabling and Solutions

Mini 4s Active Alignment Splicer

The Mini 4S is conveniently designed for FTTx, its excellent portability and reliability gives inexperienced customers convenience in any place, especially for telegraphic poles, manholes etc. Furthermore, it's faster splicing and heating time also provide unprecedented efficiency and satisfaction to customers.



- Features & Benefits
- Applicable cleaved length - up to 5mm
 - Heating time - 18 sec <60mm sleeve>
 - Universal holder 250um,900um, 2-3Φ Indoor
 - Two batteries are included in standard package - 400 cycles (splicing & heating) with two batteries
 - Full touch screen - GUI interface & tempered glass
 - SOC compatible
 - FTTH solution
 - Anti-shock, dustproof and waterproof

Ordering Information

Product Description	Part Number
Mini 4S Fusion Splicer Kit	FF-FS-M4S
Fibre Fox SE903 Spare Electrodes	FF-CT-ELEC



- 1 MINI 4S Splicer
- 2 MINI 50G Cleaver
- 3 Cleaver Softcase
- 4 Cooling Tray
- 5 Spare Electrode
- 6 Connector Heater Block
- 7 Connector Holder
- 8 Operation Manual CD
- 9 Car Cigar Jack
- 10 2 Battery Packs
- 11 Shoulder Strap
- 12 Power Cord
- 13 AC Adapter
- 14 USB Cable
- 15 Hand Carrying Case

Fibre Cabling and Solutions

Mini 4s Specifications

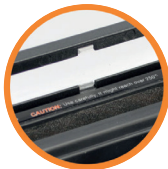
Specifications	
Splicing Method	Active Alignment DAA (Digitalized Active Alignment)
Average Loss	SM(0.02dB) / mm(0.01dB) / DS(0.05dB) / NZDS(0.05dB) / G.657(0.03dB)
Return Loss	>>60dB
Splice Time	12s average SM / SM 7s Quick mode
Electrode Lifespan	>3,500 arcs
Applicable Fibre	SM(ITU-T G.652), MM(ITU-T G.651), DS(ITU-T G.653), NTZDS(ITU-T G.655), IT-G657A, IT-G657B 0.25mm, 0.9mm, 2.0mm, 2.4mm, 3.0mm, FLAT(indoor cable)
Cleaved Length	Coating Diameter <0.25mm = 5-16mm, Coating Diameter >0.25mm = 8-16mm minimum 100-1000um
Coating Diameter	80-150um
Cladding Diameter	Factory installed mode: 3, User installable mode: 23
Heating Programs	Typical 18s
Protection Sleeve	40mm, 60mm, SOC - 3.0, SOC - 0.9
Data Output	Micro HDMI-USB master device
Splice Programs	8 User modes, User installable mode: 70+
Splice Memory	Up to 2000 records
Battery	Typical 200 Cycles (Splice & Heat) / single battery <2 Batteries Standard>
Power Supply	AC 100-240V input or DC 9-14V
Monitor	Colour 4.3" LCD monitor, with Touch Screen (Tempered Glass)
Cameras	2 CCD camera system
Magnification	XY: 150 times, X/Y: 300 power
Fibre Display	X/Y or XY, singleX.Y
Weight	1.31Kg (without battery)
Size	122mm X 124mm X 138mm
Wind Protection	The max wind speed 15m/s
Operating Environment	Elevation 0-5000 meters, -15-60°C, 0-95% relative humidity
Storage Condition	Temperature -40 to 80°C, 0-95% relative humidity, battery -20-30°C
Pull Test	1.96-2.25N (standard)



Applicable Cleaved Length



Universal Holder



Heating Time



Full Touch Screen

Fibre Cabling and Solutions

Mini 6s Core Alignment Splicer

The Mini 6S with its excellent portability and reliability gives inexperienced customers convenience under any environmental conditions. Furthermore, it's faster splicing and heating time also provide unprecedented efficiency and satisfaction to customers.



Features & Benefits

- Heating time - 18 sec <60mm sleeve>
- Universal holder 250um,900um, 2-3Φ Indoor
- Two batteries are included in standard package - 400 cycles (splicing & heating) with two batteries
- Full touch screen - GUI interface & tempered glass
- SOC compatible
- The fastest splicing time - 7s with SM fibre
- Anti-shock, dustproof and waterproof

Ordering Information

Product Description	Part Number
Mini 6S Fusion Splicer Kit	FF-FS-M6S
Fibre Fox SE903 Spare Electrodes	FF-CT-ELEC



- 1 MINI 6S Splicer
- 2 MINI 50G Cleaver
- 3 Cleaver Softcase
- 4 Cooling Tray
- 5 Spare Electrode
- 6 Connector Heater Block
- 7 Connector Holder
- 8 Operation Manual CD
- 9 Car Cigar Jack
- 10 2 Battery Packs
- 11 Shoulder Strap
- 12 Power Cord
- 13 AC Adapter
- 14 USB Cable
- 15 Hand Carrying Case



Fibre Cabling and Solutions

Mini 6s Specifications

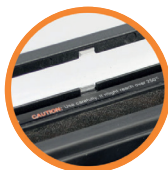
Specifications	
Splicing Method	Core Alignment DWACAS (Digital Wavelength Automatic Core Alignment System)
Average Loss	SM(0.02dB) / mm(0.01dB) / DS(0.04dB) / NZDS(0.04dB) / G.657(0.02dB)
Return Loss	>>60dB
Splice Time	12s average SM / SM 7s Quick mode
Electrode Lifespan	>3,500 arcs
Applicable Fibre	SM(ITU-T G.652), MM(ITU-T G.651), DS(ITU-T G.653), NTZDS(ITU-T G.655), IT-G657A, IT-G657B 0.25mm, 0.9mm, 2.0mm, 2.4mm, 3.0mm, FLAT(indoor cable)
Cleaved Length	Coating Diameter <0.25mm = 8-16mm, Coating Diameter >0.25mm = 16mm minimum
Coating Diameter	100-1000um
Cladding Diameter	80-150um
Heating Programs	Factory installed mode: 11, User installable mode: 23
Heating Time	Typical 18s
Protection Sleeve	40mm, 60mm, SOC Connector
Data Output	Micro HDMI-USB master device
Splice Programs	Factory installed mode: 33, User installable mode: 70+
Splice Memory	Up to 2000 records and 2000 splice images
Battery	Typical 200 Cycles (Splice & Heat) / single battery <2 Batteries Standard>
Power Supply	AC 100-240V input or DC 9-14V
Monitor	Colour 4.3" LCD monitor, with Touch Screen (Tempered Glass)
Cameras	2 CCD camera system
Magnification	XY style: 150 power, X/Y: 300 power
Fibre Display	X/Y or XY, singleXY
Weight	1.39Kg (without battery)
Size	122mm X 124mm X 138mm
Wind Protection	The max wind speed 15m/s
Operating Environment	Elevation 0-5000 meters, -15-60°C, 0-95% relative humidity
Storage Condition	Temperature -40 to 80°C, 0-95% relative humidity, battery -20-30°C
Pull Test	1.96-2.25N (standard)



Two Batteries Included



SOC Compatible



Heating Time



Full Touch Screen

Fibre Cabling and Solutions

Foxtails

Fibre Fox splice-on connectors provide a convenient low loss alternative to using pigtails to field terminate fibre cable. The connector is supplied ready terminated with a short length of fibre, which can be directly spliced to installed cable. The splice is then protected within the specially designed connector boot, removing need for additional splice trays or housings. Used in conjunction with Fibre Fox Fusion Splicers, the connectors offer a quick to use, high quality, low insertion loss, low return loss, fully compliant solution.

Features & Benefits

- Compliant with IEX51754-4, KS C6974(F04), JIS C5973(F04)
- Compliant with Telcridia GR-326-core
- Able to terminate the fibre with a connector in the field
- Jointing point is located inside of the connector
- Higher quality, better insertion loss and return loss
- Easy to assemble with one step system

Ordering Information	
Product Description	Part Number
Fibre Fox SOC LC PC Connector	FF-SOC-LCPC-XXX
Fibre Fox SOC LC APC Connector	FF-SOC-LCAPC-XXX
Fibre Fox SOC FC PC Connector	FF-SOC-FCPC-XXX
Fibre Fox SOC ST PC Connector	FF-SOC-STPC-XXX
Fibre Fox SOC SC PC Connector	FF-SOC-SCPC-XXX
Fibre Fox SOC SC Connector APC	FF-SOC-SCAPC-XXX

XXX = Type of Fibre: OM1, OM2, OM3, OM4. OS2.

Specifications						
Type	Item		SM	MM		
General Connector	Fibre Type		9/125	OM1	OM2	OM3
	Insertion Loss	UPC	≤ 0.2dB			
		APC	≤ 0.2dB			
	Return Loss	UPC	≤ 50dB	-		
		APC	≤ 60dB	-		
	Repeating Test		500 Cycles, ≤0.2dB			
	Operation Temp		-45°C - 85°C			
SC	Type of Fibre		0.9mm fibre, 2.0mm, 2.4mm, 3.0mm cable, 3X2 indoor cable			
	Tensile Force		≥30N(≥3.1kgf) for 3.0mm code or 0.9mm fibre / ≥80N(≥8.0kgf) for 3X2 indoor cable			
LC	Type of Fibre		2.0mm Code, 3.0mm cable, 3X2 indoor cable			
	Tensile Force		≥30N(≥3.1KGF) for 2.0mm code/≥50N(5.1kgf) for 3.0mm Cable or 3X2 Indoor Cable			



Fibre Cabling and Solutions

Foxtail - Assembly Procedure



1. Pass the cable through the boot and the boot cap.



2. Strip the indoor cable with a stripper.



3. Clean the stripped cable with an alcohol soaked tissue.



4. Cleave it with a cleaver.



5. Take the fibre protector off from the ferrule.



6. Put the ferrule and cable on the V-groove.



7. Splice.



8. Put the spliced connector in the oven, then it will start heating automatically.



9. Get the heated sleeve cooled.



10. Assemble the boot and the cap.



11. Assemble the housing.



12. Completed.

Fibre Cabling and Solutions

High Performance Mini Precision Cleaver

Fibre Fox’s innovative cleaver series bring maximum portability and convenience to any customers who work under various environmental conditions.

Features & Benefits

- Universal Holder 250um,900um, 2-3Φ Indoor
- The most precise mini cleaver
- Blade life span ≤0.5 : 50,000
- Robust and shock resistant
- Chip collector (50GB)

Ordering Information

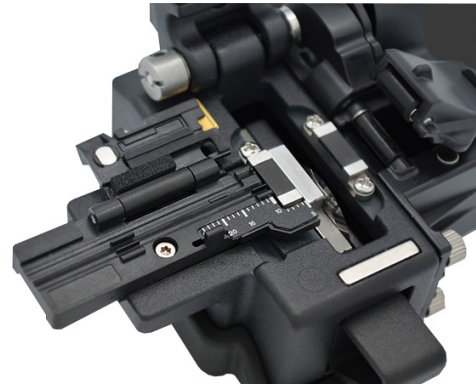
Product Description	Part Number
Fiberfox Mini DC-12 Cleaver (with Auto collect tray)	FF-CT-DC12
Fiberfox SE903 Spare Electrodes	FF-CT-ELEC
Fiberfox DC-12 Cleaver Blade	FF-CT-CB

Specifications

Type	Single Fibre
Applicable Fibre	250um, 900um, Φ2mm, Φ3mm, Drop Cable
Clad Diameter	80-125um
Length	8-20mm (Single Fibre)
Cleaving Angle	≤0.5
Lifespan of Blade	50,000 Times
Operation Step	2 Steps/Auto Pushback Slider Block
Holder	Universal Holder
Collector	Auto Collector (50GB)
Weight	50G (221G) - 50GB (248G)



Chip Collector



Universal Holder

Fibre Cabling and Solutions

Warranty, Service and Gold Care Plan

Warranty

- All Fibre Fox Splicers come with a 3-year product warranty.

Fibre Fox Service

- To keep your Splicer in top condition, we recommend annual servicing and calibration.
- The Fibre Fox Service includes a thorough check of the unit and a full calibration.
- Once inspected we will advise of the costs of any parts required before undertaking the service in full.
- We will recommend the repair or replacement of any worn or broken components, to give the unit maximum reliability on site.
- Cost includes collection and delivery.

Gold Support Package - 5 Years

- Includes 4 annual services – calibration and replacement of working parts (Electrodes etc).
- We will collect your unit, and deliver a replacement, so you are never without a splicer.
- Once serviced we will return your unit and collect the replacement.
- If your splicer develops a fault, we will send a replacement and collect the faulty unit, then advise of cost of repair to fix the damage; then fix the unit and swap back with 7-10 days.



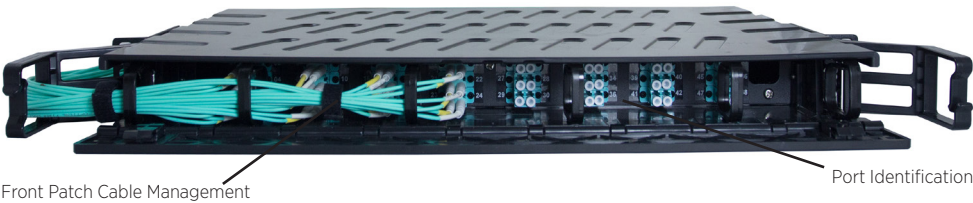
Fibre Cabling and Solutions

Pro-Patch Panel - Overview

Fibre Fox Pro Patch Panel - Front Closed



Fibre Fox Pro Patch Panel - Front Open



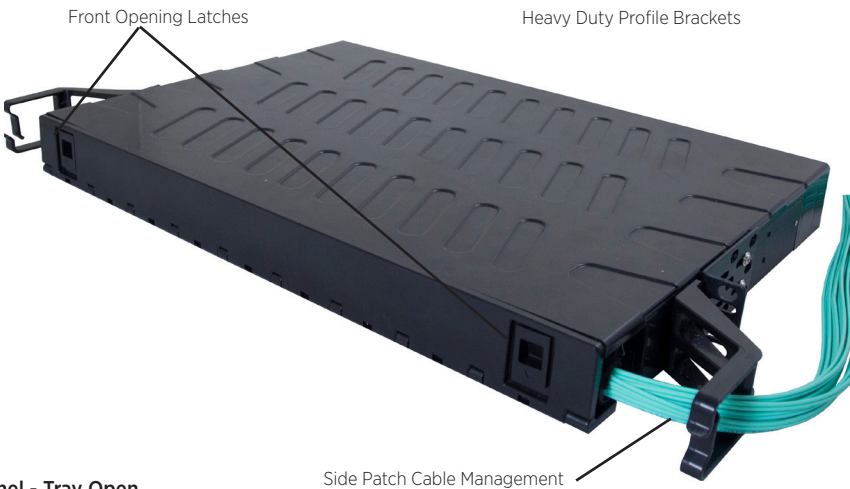
Fibre Fox Pro Patch Panel - Panel Back



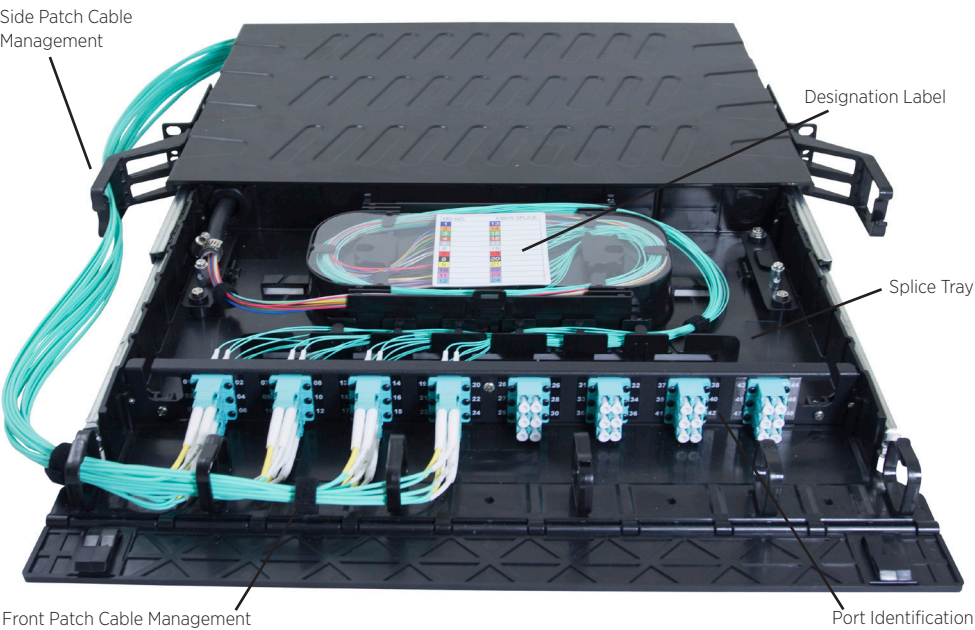
Fibre Cabling and Solutions

Pro-Patch Panel - Features & Benefits

Fibre Fox Pro Patch Panel - Side View

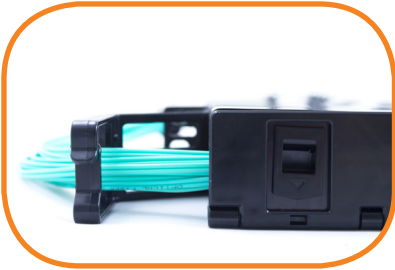


Fibre Fox Pro Patch Panel - Tray Open

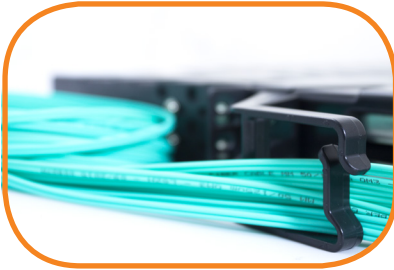


Fibre Cabling and Solutions

Pro-Patch Panel - Exclusive Features



Front Opening Latch



Side Patch Cable Management



Front Patch Cable Management



High Grade Sliding



Port Identification



Heavy Duty Profile Brackets



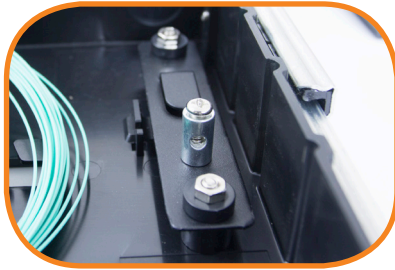
Front Lid Open

Fibre Cabling and Solutions

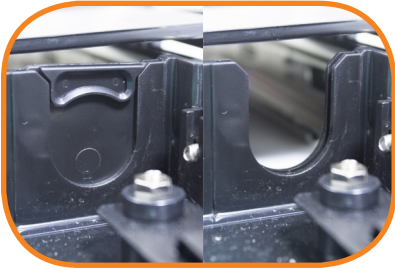
Pro-Patch Panel - Exclusive Features



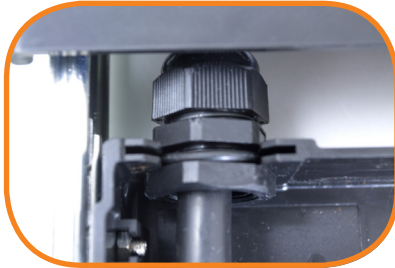
High Grade Cable Clamping (with cable)



High Grade Cable Clamping (without cable)



Easy Access Premoulded Cable Entry



Easy Access Premoulded Cable Entry



Splice Tray



Designation Label

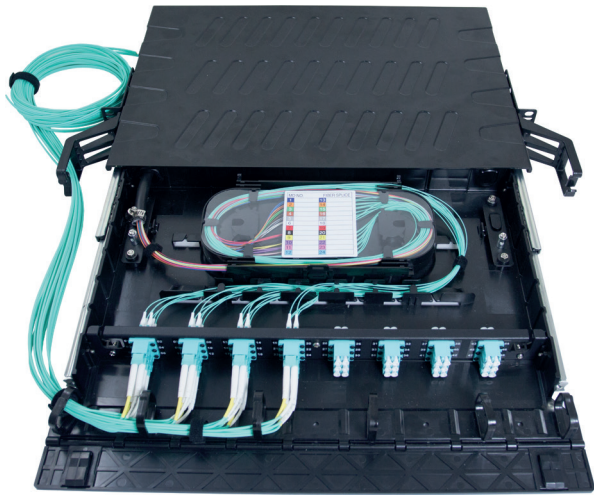


Front Lid Closed

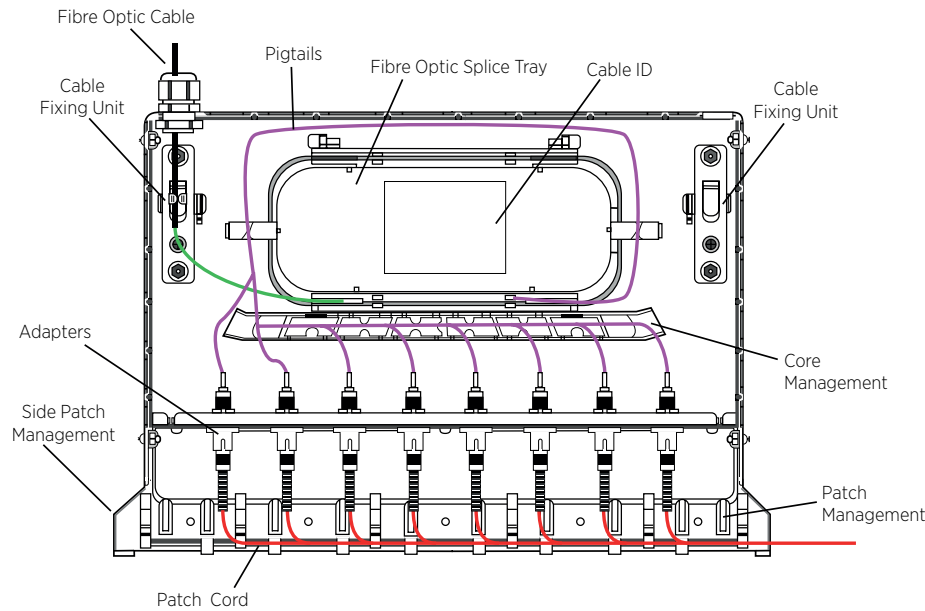
Fibre Cabling and Solutions

Pro-Patch Panel - Dimensions

Dimensions



Fibre Arrangement



Fibre Cabling and Solutions

Pro-Patch Panel - Ordering Information

Panel Comparison	Standard Fixed Panel	Sliding Panel	Fibre Pro Panel
Front Latched Cover			X
Patch Cable Mangement			X
Port ID Internal & External			X
Side Patch Management			X
Real Time Sliding Tray			X
Heavy Duty Profile Brackets			X
Internal Cable Clamping Fixture			X
Cable Gland Inserts			X
Professional Splice Tray			X
Internal Fibre Management			X
Bunny Clips	X	X	
Splice Holder	X	X	
Sliding Lid		X	
Flat Screw on Lid	X		

Product Description	Part Number
2 Way Multimode LC Duplex	FF-PPL-2WLC-MMDX
4 Way Multimode LC Duplex	FF-PPL-4WLC-MMDX
6 Way Multimode LC Duplex	FF-PPL-6WLC-MMDX
8 Way Multimode LC Duplex	FF-PPL-8WLC-MMDX
12 Way Multimode LC Duplex	FF-PPL-12WLC-MMDX
16 Way Multimode LC Duplex	FF-PPL-16WLC-MMDX
24 Way Singlemode LC Duplex	FF-PPL-24WLC-MMDX
2 Way Multimode SC Duplex	FF-PPL-2WSC-MMDX
4 Way Multimode SC Duplex	FF-PPL-4WSC-MMDX
6 Way Multimode SC Duplex	FF-PPL-6WSC-MMDX
8 Way Multimode SC Duplex	FF-PPL-8WSC-MMDX
12 Way Multimode SC Duplex	FF-PPL-12WSC-MMDX
16 Way Multimode SC Duplex	FF-PPL-16WSC-MMDX
24 Way Multimode SC Duplex	FF-PPL-24WSC-MMDX
2 Way Multimode SC Simplex	FF-PPL-2WSC-MMSX
4 Way Multimode SC Simplex	FF-PPL-4WSC-MMSX
6 Way Multimode SC Simplex	FF-PPL-6WSC-MMSX
8 Way Multimode SC Simplex	FF-PPL-8WSC-MMSX
12 Way Multimode SC Simplex	FF-PPL-12WSC-MMSX
16 Way Multimode SC Simplex	FF-PPL-16WSC-MMSX
24 Way Multimode SC Simplex	FF-PPL-24WSC-MMSX
2 Way Singlemode SC Duplex	FF-PPL-2WSC-SMDX
4 Way Singlemode SC Duplex	FF-PPL-4WSC-SMDX
6 Way Singlemode SC Duplex	FF-PPL-6WSC-SMDX
8 Way Singlemode SC Duplex	FF-PPL-8WSC-SMDX
12 Way Singlemode SC Duplex	FF-PPL-12WSC-SMDX
16 Way Singlemode SC Duplex	FF-PPL-16WSC-SMDX
24 Way Singlemode SC Duplex	FF-PPL-24WSC-SMDX
2 Way Singlemode FC Simplex	FF-PPL-2WFC-SMSX
4 Way Singlemode FC Simplex	FF-PPL-4WFC-SMSX
6 Way Singlemode FC Simplex	FF-PPL-6WFC-SMSX
8 Way Singlemode FC Simplex	FF-PPL-8WFC-SMSX
12 Way Singlemode FC Simplex	FF-PPL-12WFC-SMSX
16 Way Singlemode FC Simplex	FF-PPL-16WFC-SMSX
24 Way Singlemode FC Simplex	FF-PPL-24WFC-SMSX
2 Way Singlemode ST Simplex	FF-PPL-2WST-SMSX
4 Way Singlemode ST Simplex	FF-PPL-4WST-SMSX
6 Way Singlemode ST Simplex	FF-PPL-6WST-SMSX
8 Way Singlemode ST Simplex	FF-PPL-8WST-SMSX
12 Way Singlemode ST Simplex	FF-PPL-12WST-SMSX
16 Way Singlemode ST Simplex	FF-PPL-16WST-SMSX
24 Way Singlemode ST Simplex	FF-PPL-24WST-SMSX

Ordering Information	Part Number
Product Description	
6 Way Multimode ST Simplex	FF-PPL-6WST-MMSX
8 Way Multimode ST Simplex	FF-PPL-8WST-MMSX
12 Way Multimode ST Simplex	FF-PPL-12WST-MMSX
16 Way Multimode ST Simplex	FF-PPL-16WST-MMSX
24 Way Multimode ST Simplex	FF-PPL-24WST-MMSX
2 Way Singlemode LC Duplex	FF-PPL-2WLC-SMDX
4 Way Singlemode LC Duplex	FF-PPL-4WLC-SMDX
6 Way Singlemode LC Duplex	FF-PPL-6WLC-SMDX
8 Way Singlemode LC Duplex	FF-PPL-8WLC-SMDX
12 Way Singlemode LC Duplex	FF-PPL-12WLC-SMDX
16 Way Singlemode LC Duplex	FF-PPL-16WLC-SMDX
24 Way Singlemode LC Duplex	FF-PPL-24WLC-SMDX
2 Way Singlemode SC Simplex	FF-PPL-2WSC-SMSX
4 Way Singlemode SC Simplex	FF-PPL-4WSC-SMSX
6 Way Singlemode SC Simplex	FF-PPL-6WSC-SMSX
8 Way Singlemode SC Simplex	FF-PPL-8WSC-SMSX
12 Way Singlemode SC Simplex	FF-PPL-12WSC-SMSX
16 Way Singlemode SC Simplex	FF-PPL-16WSC-SMSX
24 Way Singlemode SC Simplex	FF-PPL-24WSC-SMSX
2 Way Singlemode SC Duplex	FF-PPL-2WSC-SMDX
4 Way Singlemode SC Duplex	FF-PPL-4WSC-SMDX
6 Way Singlemode SC Duplex	FF-PPL-6WSC-SMDX
8 Way Singlemode SC Duplex	FF-PPL-8WSC-SMDX
12 Way Singlemode SC Duplex	FF-PPL-12WSC-SMDX
16 Way Singlemode SC Duplex	FF-PPL-16WSC-SMDX
24 Way Singlemode SC Duplex	FF-PPL-24WSC-SMDX
2 Way Singlemode FC Simplex	FF-PPL-2WFC-SMSX
4 Way Singlemode FC Simplex	FF-PPL-4WFC-SMSX
6 Way Singlemode FC Simplex	FF-PPL-6WFC-SMSX
8 Way Singlemode FC Simplex	FF-PPL-8WFC-SMSX
12 Way Singlemode FC Simplex	FF-PPL-12WFC-SMSX
16 Way Singlemode FC Simplex	FF-PPL-16WFC-SMSX
24 Way Singlemode FC Simplex	FF-PPL-24WFC-SMSX
2 Way Singlemode ST Simplex	FF-PPL-2WST-SMSX
4 Way Singlemode ST Simplex	FF-PPL-4WST-SMSX
6 Way Singlemode ST Simplex	FF-PPL-6WST-SMSX
8 Way Singlemode ST Simplex	FF-PPL-8WST-SMSX
12 Way Singlemode ST Simplex	FF-PPL-12WST-SMSX
16 Way Singlemode ST Simplex	FF-PPL-16WST-SMSX
24 Way Singlemode ST Simplex	FF-PPL-24WST-SMSX

Fibre Cabling and Solutions

Fibre Training Courses

Fibre optic links are becoming an increasingly common part of cabling infrastructures. Installers have to be competent when specifying, terminating, testing and installing fibre optics. The Connectix Fibre Optic Termination Course provides delegates with the hands-on practical experience and theoretical knowledge needed to successfully terminate fibres on site.

Coverage of typical LAN applications and their specific fibre requirements will provide delegates with the confidence to specify the correct type of fibre for intended application while also considering environmental factors. Coverage of fibre optic testing will demonstrate how to prove successful in cable installation and termination.

Features & Benefits

- Gives delegates confidence to install and test fibre optic cables and connectors successfully.
- The relationship of fibre optic cabling to commonly specified cabling standards will be understood.
- Fibre optic technology overview with theory of operation relating to real world applications.
- Hands-on termination and demonstration of glue and polish, fusion splicing and crimping methods.
- Certificate awarded for successful completion based on an examination pass.
- 7 BICSI CEC Credits available upon course completion.

Course Description

The Connectix Fibre Optic Training Course aims to offer a balanced mix of theory and practice relating to the use of fibre optic cabling within the structured cabling system standards EIA/TIA-568C, ISO/IEC 11801 2nd edition and EN50174. Application standards are also introduced with regard to the importance of their consideration when specifying fibre cable and connector types for particular applications.

This course requires no prior knowledge or experience. Inexperienced delegates will leave with adequate knowledge, confidence and practical experience for specification and successful installation of fibre optic links. Delegates new to fibre optic cabling and those already experienced in practical installation will improve their formal knowledge of the theory behind the operation of fibre and the choices available in selection of fibre and termination methods.

The course is run by a fully qualified Connectix Cabling Systems structured cabling trainer who is constantly updated in line with the rapidly changing standards, technologies and terminologies. Upon completion of the course an examination is taken by each delegate, successful candidates are awarded a certificate acknowledging their competence.

Course Structure

- Introduction to Connectix
- Course Introduction
- Fibre Optic Cabling Theory
- Practical Detail
- Fibre Link Testing
- Assessment
- Practical Exercise – Key Activities
- Connectix Training – General Guidance & Information



Racky Rax Ltd, 500 Avenue West, Skyline 120, Braintree, Essex, CM77 7AA

T: 01376 346600 F: 01376 346620 E: sales@Racky Rax.co.uk
www.Racky Raxcablingssystems.com

