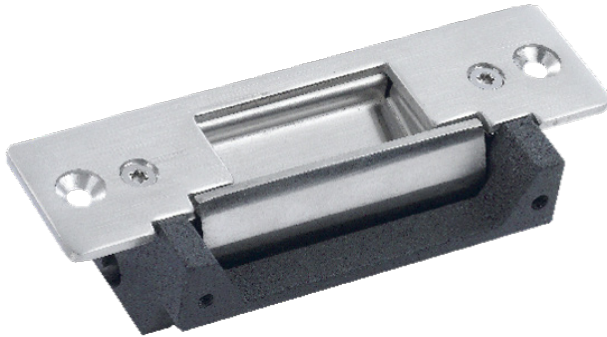


ASF702

Electric Strike lock



Features

- An-ti pull 500kg
- Special design, the lock bolt can adjust the distance
- Especially suitable for the metal frame hole installed directly
- 100,000 times aging test qualified
- The surface temperature of the lacquer that bake, durable and beautiful

Technical Specification

Electronic

Working voltage	DC12V
Working current	320mA
State Output	yes

General

Applications	Wooden door, metal door, PVC door, etc
Material	Stainless steel precision casting
Anti-pull	500kg
Dimensions	165*32*35mm
Weight	0.4kg

Working Environment

Working temperature	-30°C~+60°C
Working humidity	≤95%

Dimensions

