



JEISOON KANG
HANWHA TECHWIN CO LTD
6, PANGYO-RO 319BEON-GIL, BUNDANG-GU
SEONGNAM-SI GYEONGGI-DO 13488 KOREA

Date: 2020/01/14
Subscriber: 813307003
PartySite: 105140
File No: E158873
Project No: 4789196101
PD No: 20002967
Type: R
PO Number:

Subject: **Procedure And/Or Report Material**

The following material resulting from the investigation under the above numbers is enclosed.

Issue

<u>Date</u>	<u>Vol</u>	<u>Sec</u>	<u>Pages</u>	<u>Revised Date</u>
	X1		Index Page(s)	
2020/01/10	X1	A6012	Cert of Compliance	
2020/01/10	X1	A6012	Add New Proc/Report Sect	

PO # KANG, JEISOON

legible images may be found online via MyHome@UL under My UL Reports/CDA

Please file revised pages and illustrations in place of material of like identity. New material should be filed in its proper numerical order.

NOTE: Follow-Up Service Procedure revisions DO NOT include Cover Pages, Test Records and Conclusion Pages. Report revisions DO NOT include Authorization Pages, Indices, Section General Pages and Appendixes.

Please review this material and report any inaccuracies to UL's Customer Service Professionals. Contact information for all of UL's global offices can be found at <http://ul.com/aboutul/locations>.

If you'd like to receive updated materials FASTER, UL offers electronic access and/or delivery of this material. For more details, contact UL's Customer Service Professionals as shown above.

This material is provided on behalf of UL LLC(UL) or any authorized licensee of UL.

SEO File

File		Volume	Page	Date:
E158873	Index	X1	1	12-Jan-20

Index

Product Type	Model/Type Reference	Report Reference #	Status
Digital Video Recorder	SVR-430	E158873-A2-UL	
Video Presenter	UF-80, UF-80DX, UF-80ST	E158873-A4-UL	
Video Presenter	SVP-5300N	E158873-A5-UL	
Video Presenter	SDP-900DXAN, SDP-950DXAN, SDP-950STAN	E158873-A6-UL	
Video Presenter	SDP-850, SDP-850DX	E158873-A9-UL	
Digital Video Recorder	SVR-1650, SVR-1650E, SVR-1640, SVR-1640E, SVR-950, SVR-950E and SVR-1640A	E158873-A11-UL	
Video Presenter	SDP-6500DXA	E158873-A12-UL	
Video Presenter	UF-130DX	E158873-A14-UL	
Video Presenter	UF-130ST	E158873-A15-UL	
Network Video Recorder	SNR-6400, SNR-3200, SRN-3250, SRN-6450	E158873-A16-UL	
Digital Video Recorder.	SVR-480	E158873-A17-UL	Withdrawn
Video Presenter	SDP-860	E158873-A18-UL	
Digital Video Recorder.	SVR-1670	E158873-A19-UL	
UTP Power Supply Unit	SPU-400	E158873-A20-UL	Withdrawn
Digital Presenter	SDP-760	E158873-A44-UL	
Network Camera	SNP-5300H*, SNP-6201H* (* is Blank or N or P: N = NTSC, P=PAL)	E158873-A45-UL	
Network Camera	SND-7011*, SND-5011*, SND-5061*, SND-7061*, SNV-5010*, SNZ-5200* (* is blank or N or P: N = NTSC, P=PAL)	E158873-A46-UL	
Network Camera	SNP-5300*, SNP-6201* (* is blank or N or P: N = NTSC, P=PAL)	E158873-A47-UL	
Digital Color Camera	SCP-3371H*, SCP-2371H*, SCP-2271H*, SCP-2373H*, SCP-2273H* (* is blank or N or P: N = NTSC, P=PAL)	E158873-A48-UL	
Digital Color Camera	SCP-3371*, SCP-2371*, SCP-2271*, SCP-2373*, SCP-2273* (* is blank or N or P: N = NTSC, P=PAL)	E158873-A49-UL	
Network Camera	SND-7082*, SND-7082F*, SNV-7082* (* is blank or N or P: N = NTSC, P=PAL)	E158873-A50-UL	
Network Camera	SNB-7001*, SNB-5001*, SNB-3002* (* is blank or N or P: N = NTSC, P=PAL)	E158873-A51-UL	
Network Camera	SNO-7082R* (* is blank or N or P: N = NTSC, P=PAL)	E158873-A52-UL	
Network Camera	SNB-7002* (* is blank or N or P: N = NTSC, P=PAL)	E158873-A53-UL	

File		Volume	Page	Date:
E158873	Index	X1	2	12-Jan-20

DIGITAL COLOR CAMERA	SCV-2010F*, SCD-1020R*, SCD-2080R*, SCD-2020R*, SCD-2010*, SCD-2010B*, SCD-2010F*, SCB-3020*, SCB-3021*, SCB-2010*, SCO-1020R* (* is blank or N or P: N=NTSC, P=PAL)	E158873-A54-UL	
Network Camera	SNB-6004*, SNB-6003*, SNB-5004*, SNB-5003*, SNB-7004*, SNB-6005* (* is blank or N or P: N = NTSC, P=PAL)	E158873-A55-UL	
Network Camera	SND-6084*, SND-6083*, SND-5084*, SND-5083*, SND-7084* (* is blank or N or P: N = NTSC, P=PAL)	E158873-A56-UL	
DIGITAL COLOR CAMERA	SCD-2022*, SCD-2022R*, SCD-2042R* (* is blank or N or P: N = NTSC, P=PAL)	E158873-A58-UL	
Digital Color Camera	SCB-2004*, SCB-2005* (* is blank or N or P: N = NTSC, P=PAL);	E158873-A59-UL	
Digital Color Camera	SCD-2082*, SCV-2082R*, SCV-3083*, SCD-3083* (* is blank or N or P: N = NTSC, P=PAL)	E158873-A60-UL	
Network Camera	SND-6084R*, SND-7084R*, SND-5084R* (* is blank or N or P: N = NTSC, P=PAL)	E158873-A61-UL	
NETWORK CAMERA	SNO-6084R*. SNO-7084R* (* is blank or N or P: N = NTSC, P=PAL)	E158873-A62-UL	
Network Camera	SNV-6084R*, SNV-6084*, SNV-5084*, SNV-7084*, SNV-7084R*, SNV-5084R*, SNV-6084T* (* is blank or N or P: N = NTSC, P=PAL)	E158873-A63-UL	
Digital Color Camera	SCO-2081R* (* is blank or N or P: N = NTSC, P=PAL)	E158873-A64-UL	
DIGITAL COLOR CAMERA	SCB-2004*D, SCB-2005*D (* is blank or N or P: N = NTSC, P=PAL)	E158873-A65-UL	
DIGITAL VIDEO RECORDER	SRD-1673D*, SRD-1654D*, SRD-854D*, SRD-852D*, SRD-1673*, SRD-1653*, SRD-873*, SRD-1640*, SRD-840*(* is blank or N or P, N=NTSC / P=PAL)	E158873-A66-UL	
Network Camera	SNP-6200RH*, SCP-2370RH* (* is blank or N or P: N=NTSC,P=PAL)	E158873-A67-UL	
Network Camera	SNV-6012M* (* is blank or N or P: N = NTSC, P=PAL)	E158873-A68-UL	
Network Camera	SNF-7010*, SNF-7010V*, SNF-7010VM* (* is blank or N or P: N = NTSC, P=PAL)	E158873-A69-UL	
Network Camera	SNO-6011R* (* is blank or N or	E158873-A72-UL	

File		Volume	Page	Date:
E158873	Index	X1	3	12-Jan-20

	P: N = NTSC, P=PAL)		
Network Camera	SND-6011R* (* is blank or N or P: N = NTSC, P=PAL)	E158873-A73-UL	
Digital Video Recorder	SRD-1680D*, SRD-880D* (* is blank or N or P : N=NTSC, P=PAL)	E158873-A74-UL	
DIGITAL COLOR CAMERA	SCZ-2373*, SCZ-2273* (* is blank or N or P: N = NTSC, P=PAL)	E158873-A75-UL	
NETWORK CAMERA	SCO-6081R* (* is blank or N or P: N = NTSC, P=PAL)	E158873-A76-UL	
DIGITAL COLOR CAMERA	SCV-6081R* and SCD-6081R* (* is blank or N or P: N = NTSC, P=PAL)	E158873-A77-UL	
NETWORK VIDEO RECORDER	SRN-4000	E158873-A78-UL	
DIGITAL COLOR CAMERA	SCD-6021* (* is blank or N or P: N = NTSC, P=PAL)	E158873-A81-UL	
NETWORK CAMERA	SNV-6013* (* is blank or N or P: N = NTSC, P=PAL)	E158873-A83-UL	
NETWORK CAMERA	SNB-6010*, SNB-6010A*, SNB-6011*, SNB-6010B*, SNB-6011B* (* is blank or N or P: N = NTSC, P=PAL)	E158873-A85-UL	
NETWORK CAMERA	SNP-6320H*, SNP-5430H* (* is blank or N or P: N = NTSC, P=PAL)	E158873-A86-UL	
NETWORK CAMERA	SNP-6320*, SNP-5430* (* is blank or N or P: N = NTSC, P=PAL)	E158873-A87-UL	
Network Video Recorder	SRN-472S, XRN-810S* (* is blank or N or P: N = NTSC, P=PAL)	E158873-A88-UL	
Digital Video Recorder	SRD-1676D*, SRD-1656D*, SRD-876D* (* is blank or N or P, N=NTSC/ P=PAL)	E158873-A89-UL	
DIGITAL COLOR CAMERA	SCB-5000* (* is blank or N or P: N = NTSC, P=PAL)	E158873-A90-UL	
DIGITAL COLOR CAMERA	SCB-5000*D (* is blank or N or P: N = NTSC, P=PAL)	E158873-A91-UL	
DIGITAL COLOR CAMERA	SCD-5080* (* is blank or N or P: N = NTSC, P=PAL)	E158873-A92-UL	
DIGITAL COLOR CAMERA	SCB-5003*, SCB-5005*, HCB-6001* (* is blank or N or P: N = NTSC, P=PAL)	E158873-A94-UL	
DIGITAL COLOR CAMERA	SCV-5082* (* is blank or N or P: N = NTSC, P=PAL)	E158873-A95-UL	
DIGITAL COLOR CAMERA	SCD-5083*, SCD-5083R*, SCD-5082*, SCD-5083B*, SCD-5081R* (* is blank or N or P: N = NTSC, P=PAL)	E158873-A96-UL	
DIGITAL COLOR CAMERA	SCV-5083* (* is blank or N or P: N = NTSC, P=PAL) SCV-5083R* (* is blank or N or	E158873-A97-UL	

File		Volume	Page	Date:
E158873	Index	X1	4	12-Jan-20

	P: N = NTSC, P=PAL) SCV-5081R* (* is blank or N or P: N = NTSC, P=PAL)		
NETWORK CAMERA	SNF-8010VM*, SNF-8010* (* is blank or N or P: N = NTSC, P=PAL)	E158873-A98-UL	
DIGITAL COLOR CAMERA	SCD-5030*, SCD-5020* (* is blank or N or P: N = NTSC, P=PAL)	E158873-A99-UL	
NETWORK CAMERA	SNO-5084R* (* is blank or N or P: N = NTSC, P=PAL)	E158873-A100-UL	
DIGITAL COLOR CAMERA	SCO-5083R*, SCO-5081R* (* is blank or N or P: N = NTSC, P=PAL)	E158873-A101-UL	
NETWORK CAMERA	SNP-6321*, SNP-L6233* (* is blank or N or P: N = NTSC, P=PAL)	E158873-A102-UL	
NETWORK CAMERA	SNP-6321H*, SNP-L6233H* (* is blank or N or P: N = NTSC, P=PAL)	E158873-A103-UL	
DIGITAL COLOR CAMERA	SCV-5085* (* is blank or N or P: N = NTSC, P=PAL)	E158873-A104-UL	
NETWORK CAMERA	SNB-8000* (* is blank or N or P: N = NTSC, P=PAL)	E158873-A105-UL	
NETWORK CAMERA	SNV-8080* (* is blank or N or P: N = NTSC, P=PAL)	E158873-A106-UL	
NETWORK CAMERA	SNZ-6320	E158873-A107-UL	
NETWORK CAMERA	SNP-6320RH*, SNP-L6233RH* (* is blank or N or P: N=NTSC,P=PAL)	E158873-A108-UL	
NETWORK CAMERA	SNP-5321H*, SNP-L5233H* (* is blank or N or P: N = NTSC, P=PAL)	E158873-A109-UL	
NETWORK CAMERA	SNP-5321*, SNP-L5233* (* is blank or N: NTSC or P:PAL)	E158873-A110-UL	
NETWORK CAMERA	SND-L6013R*, SND-L6013*, SND-L6012*, SND-L5013* (* is blank or N or P: N:NTSC/P:PAL)	E158873-A111-UL	
NETWORK CAMERA	SNO-L6083R*, SNO-L5083R* (* is blank or N or P: N = NTSC, P=PAL)	E158873-A113-UL	
Network Video Recorder	SRN-1673S*(* is blank or N or P: N = NTSC, P=PAL)	E158873-A115-UL	
NETWORK CAMERA	SNO-L6013R* (* is blank or N or P: N = NTSC, P=PAL)	E158873-A118-UL	
NETWORK CAMERA	SND-L6083R*, SND-L5083R* (* is blank or N or P: N = NTSC, P=PAL)	E158873-A119-UL	
Network Video Recorder	SRN-873S* (* is blank or N or P: N = NTSC, P=PAL)	E158873-A120-UL	
NETWORK CAMERA	SNV-L6083R*, SNV-L5083R* (* is blank or N or P: N = NTSC, P=PAL)	E158873-A121-UL	

File		Volume	Page	Date:
E158873	Index	X1	5	12-Jan-20

NETWORK CAMERA	SNB-9000* (* is blank or N or P: N = NTSC, P=PAL)	E158873-A122-UL	
Optical PTZ Accessary	SBP-301HF	E158873-A125-UL	
Optical PTZ Accessary	SBP-300HF	E158873-A126-UL	
NETWORK CAMERA	SNV-8081R* (* is Blank or N or P: N = NTSC, P=PAL)	E158873-A127-UL	
NETWORK CAMERA	SNO-8081R* (* is blank or N or P: N = NTSC, P=PAL)	E158873-A128-UL	
NETWORK CAMERA	SNV-6085R* (* is blank or N or P: N = NTSC, P=PAL) SNV-6085* (* is blank or N or P: N = NTSC, P=PAL)	E158873-A129-UL	
DIGITAL COLOR CAMERA	SCB-6003* (* is blank or N or P: N = NTSC, P=PAL)	E158873-A130-UL	
DIGITAL COLOR CAMERA	SCO-6023R* (* is blank or N or P: N = NTSC, P=PAL)	E158873-A132-UL	
DIGITAL COLOR CAMERA	SCV-6083R* (* is blank or N or P: N = NTSC, P=PAL)	E158873-A133-UL	
DIGITAL COLOR CAMERA	SCV-6023R* (* is blank or N or P: N = NTSC, P=PAL)	E158873-A135-UL	
DIGITAL COLOR CAMERA	SCD-6023R*, SCD-6013* (* is blank or N or P: N = NTSC, P=PAL)	E158873-A136-UL	
DIGITAL COLOR CAMERA	SCD-6083R* (* is blank or N or P: N = NTSC, P=PAL)	E158873-A137-UL	
DIGITAL COLOR CAMERA	SCO-6083R*(* is blank or N or P: N = NTSC, P=PAL)	E158873-A138-UL	
NETWORK CAMERA	SNV-L6014RM*, SNV-L6013R* (* is blank or N or P: N = NTSC, P=PAL)	E158873-A139-UL	
DIGITAL COLOR CAMERA	PNO-9080R* (* is blank or N or P: N = NTSC, P=PAL)	E158873-A140-UL	
NETWORK CAMERA	PNV-9080R* (* is blank or N or P: N = NTSC, P=PAL)	E158873-A141-UL	
NETWORK CAMERA	PND-9080R* (* is blank or N or P: N = NTSC, P=PAL)	E158873-A142-UL	
Digital Video Recorder	SRD-1685*, SRD-894*, HRD-842* (* is blank or N or P, N=NTSC/ P=PAL)	E158873-A143-UL	
Digital Video Recorder	SRD-1694*, HRD-1642* (* is blank or N or P, N=NTSC/ P=PAL)	E158873-A144-UL	
Network Video Recorder (NVR)	XRN-2011*, XRN-2010*, XRN-3010*, XRN-1610* (* is blank or N or P: N=NTSC, P=PAL) XRN-2010P/DM, XRN-3010P/DM, XRN-3010A, XRN-2011A, XRN-2010A, XRN-1610A	E158873-A146-UL	
NETWORK CAMERA	QNO-7030R*, QNO-7020R*, QNO-7010R*, QNO-6030R*, QNO-6020R*, QNO-6010R*, QNO-6070R*, QNO-7080R*, QNO-6071R* (* is blank or N or	E158873-A147-UL	

File		Volume	Page	Date:
E158873	Index	X1	6	12-Jan-20

	P: N = NTSC, P=PAL)		
NETWORK CAMERA	QND-7030R*, QND-7020R*, QND-7010R*, QND-6030R*, QND-6020R*, QND-6010R*, QND-6070R*, QND-7080R* (* is blank or N or P: N = NTSC, P=PAL)	E158873-A148-UL	
NETWORK CAMERA	QNV-7030R*, QNV-7020R*, QNV-7010R*, QNV-6030R*, QNV-6020R*, QNV-6010R*, QNV-6070R*, QNV-7080R* (* is blank or N or P: N = NTSC, P=PAL)	E158873-A149-UL	
Network Video Recorder	XRN-1610S* (* is blank or N or P: N=NTSC, P=PAL) XRN-1610SP/DM, XRN-1610SA	E158873-A150-UL	
NETWORK CAMERA	PNF-9010RV*, PNF-9010R*, PNF-9010RVM* (* is blank or N or P: N = NTSC, P=PAL)	E158873-A151-UL	
NETWORK CAMERA	PNM-9020V* (* is blank or N or P: N = NTSC, P=PAL)	E158873-A152-UL	
Network Video Recorder	PRN-4011* (* is blank or N or P: N=NTSC, P=PAL)	E158873-A153-UL	
DIGITAL COLOR CAMERA	HCP-6320*, HCP-6320A*, HCP- 6230* (* is blank or N or P: N = NTSC, P=PAL)	E158873-A154-UL	
DIGITAL COLOR CAMERA	HCP-6320H*, HCP-6320HA*, HCP-6230H* (* is blank or N or P: N = NTSC, P=PAL)	E158873-A155-UL	
NETWORK CAMERA	PNP-9200RH*, XNP-6370RH*, XNP-6330RH* (* is blank or N or P: N=NT, P=PAL)	E158873-A156-UL	
NETWORK CAMERA	XNB-8000*, XNB-6000* (* is blank or N or P: N = NTSC, P=PAL)	E158873-A157-UL	
NETWORK CAMERA	XNO-8080R*, XNO-6080R*, XNO-6120R* (* is blank or N or P: N = NTSC, P=PAL)	E158873-A158-UL	
NETWORK CAMERA	XNV-8040R*, XNV-8030R*, XNV-8020R*, XNV-6020*, XNV- 6010*, XNV-6020R* (* is blank or N or P: N = NTSC, P=PAL)	E158873-A159-UL	
NETWORK CAMERA	XND-8040R*, XND-8030R*, XND-8020R*, XND-6020*, XND- 6010*, XND-6020R* (* is blank or N or P: N = NTSC, P=PAL)	E158873-A160-UL	
NETWORK CAMERA	XNV-8080R*, XNV-6080R*, XNV-6080*, XNV-6120R*, XNV- 6120* (* is blank or N or P: N = NTSC, P=PAL), XNV-8080RS, XNV-6080RS, XNV-6120RS.	E158873-A161-UL	
NETWORK CAMERA	XND-8080RV*, XND-8080R*, XND-6080RV*, XND-6080R*, XND-6080V*, XND-6080* (* is	E158873-A162-UL	

File		Volume	Page	Date:
E158873	Index	X1	7	12-Jan-20

	blank or N or P: N = NTSC, P=PAL)		
AHD Multi Directional Camera	HCM-9020VQ* (is blank or N or P: N = NTSC, P=PAL)	E158873-A163-UL	
NETWORK CAMERA	XNO-8020R*, XNO-8030R*, XNO-8040R*, XNO-6010R*, XNO-6020R* (* is blank or N or P: N = NTSC, P=PAL)	E158873-A164-UL	
NETWORK CAMERA	XNV-6011* (* is blank or N or P: N = NTSC, P=PAL)	E158873-A165-UL	
DIGITAL COLOR CAMERA	HCD-6080R*, HCD-6070R* (* is blank or N or P: N = NTSC, P=PAL)	E158873-A167-UL	
DIGITAL COLOR CAMERA	HCV-6080R*, HCV-6070R* (* is blank or N or P: N = NTSC, P=PAL)	E158873-A168-UL	
NETWORK CAMERA	XNP-6120H* (* is blank or N or P: N = NTSC, P=PAL)	E158873-A169-UL	
NETWORK CAMERA	XND-8020F*, XND-6011F* (* is blank or N or P: N = NTSC, P=PAL)	E158873-A170-UL	
NETWORK CAMERA	PNM-9080VQ* (* is blank or N or P: N = NTSC, P = PAL)	E158873-A172-UL	
Network Storage	SRB-160S	E158873-A173-UL	
NETWORK CAMERA	TNB-6030* (* is blank or N or P: N = NTSC, P = PAL)	E158873-A174-UL	
NETWORK CAMERA	PNM-9081VQ* (* is blank or N or P: N = NTSC, P = PAL)	E158873-A176-UL	
NETWORK CAMERA	XNO-6085R* (* is blank or N or P: N = NTSC, P=PAL)	E158873-A177-UL	
NETWORK CAMERA	XNB-6005* (* is blank or N or P: N = NTSC, P=PAL)	E158873-A178-UL	
NETWORK VIDEO RECORDER	SNR-D5401N	E158873-A179-UL	
NETWORK CAMERA	XND-6085*, XND-6085V* (* is blank or N or P: N = NTSC, P=PAL)	E158873-A180-UL	
NETWORK CAMERA	XNV-6085* (* is blank or N or P: N = NTSC, P=PAL)	E158873-A181-UL	
NETWORK CAMERA	XNP-6040H* (* is blank or N or P: N = NTSC, P=PAL)	E158873-A182-UL	
NETWORK VIDEO DECODER	SPD-150* (* is blank or N or P: N = NTSC, P=PAL), SPD-151	E158873-A184-UL	
DIGITAL COLOR CAMERA	HCB-6000*, HCB-7000* (* is blank or N or P: N = NTSC, P=PAL)	E158873-A185-UL	
DIGITAL COLOR CAMERA	HCZ-6320*, HCZ-6321* (* is blank or N or P: N = NTSC, P=PAL)	E158873-A186-UL	
NETWORK CAMERA	XNF-8010RVM*, XNF-8010RV*, XNF-8010R* (* is blank or N or P: N = NTSC, P=PAL)	E158873-A187-UL	

File		Volume	Page	Date:
E158873	Index	X1	8	12-Jan-20

DIGITAL COLOR CAMERA	HCO-6070R*, HCO-6080R* (* is blank or N or P: N = NTSC, P=PAL)	E158873-A188-UL	
NETWORK CAMERA	XNB-6001* (* is blank or N or P: N = NTSC, P=PAL)	E158873-A189-UL	
DIGITAL COLOR CAMERA	HCO-7070R* (* is blank or N or P: N = NTSC, P=PAL)	E158873-A190-UL	
LENS MODULE	SLA-T2480*, SLA-T2480V*, SLA-T4680*, SLA-T4680V* (* is blank or N or P: N = NTSC, P=PAL), SLA-T4680D, SLA-T4680DW, SLA-T4680DS, SLA-T2415, SLA-T2815B.	E158873-A191-UL	
DIGITAL COLOR CAMERA	HCD-7070R* (* is blank or N or P: N = NTSC, P=PAL)	E158873-A192-UL	
DIGITAL COLOR CAMERA	HCV-7070R* (* is blank or N or P: N = NTSC, P=PAL)	E158873-A193-UL	
NETWORK VIDEO RECORDER	TRM-1610S	E158873-A194-UL	
LENS MODULE	SLA-T1080F* (* is blank or N or P: N = NTSC, P=PAL)	E158873-A195-UL	
NETWORK SWITCH	SPN-10080P, SPN-10080PM	E158873-A196-UL	
ANALOG CAMERA	HCV-7010R*, HCV-7020R*, HCV-7030R* (* is blank or N or P: N = NTSC, P=PAL)	E158873-A197-UL	
DIGITAL COLOR CAMERA	HCD-7010R*, HCD-7020R*, HCD-7030R* (* is blank or N or P: N = NTSC, P=PAL)	E158873-A198-UL	
DIGITAL COLOR CAMERA	HCO-7010R*, HCO-7020R*, HCO-7030R* (* is blank or N or P: N = NTSC, P=PAL)	E158873-A199-UL	
NETWORK CAMERA	XNP-6320, QNP-6230, XNP-6321	E158873-A200-UL	
NETWORK CAMERA	XNP-6320H, XNP-6320HS, QNP-6230H, XNP-6321H	E158873-A201-UL	
NETWORK THERMAL CAMERA	TNO-4050T, TNO-4030T, TNO-4040T	E158873-A202-UL	
NETWORK THERMAL CAMERA	TNO-4051T, TNO-4041T	E158873-A204-UL	
NETWORK CAMERA	XNV-6013M	E158873-A205-UL	
NETWORK CAMERA	XNV-6012M, XNV-6012	E158873-A206-UL	
NETWORK CAMERA	XNV-6022R, XNV-6022RM	E158873-A207-UL	
NETWORK CAMERA	LNO-6070R, LNO-6071R	E158873-A208-UL	
NETWORK CAMERA	LNO-6030R, LNO-6020R, LNO-6010R, LNO-6031R, LNO-6021R, LNO-6011R, LNO-6011RW	E158873-A209-UL	
NETWORK CAMERA	LNV-6070R	E158873-A210-UL	
NETWORK CAMERA	LND-6070R, LND-6071R	E158873-A213-UL	
NETWORK CAMERA	LNV-6030R, LNV-6020R, LNV-6010R,	E158873-A214-UL	

File		Volume	Page	Date:
E158873	Index	X1	9	12-Jan-20

	LVN-6031R, LVN-6021R, LVN-6011R		
NETWORK CAMERA	LND-6030R, LND-6020R, LND-6010R	E158873-A215-UL	
NETWORK CAMERA	XNV-L6080R, XNV-L6080	E158873-A216-UL	
NETWORK CAMERA	XND-L6080RV, XND-L6080R, XND-L6080V	E158873-A217-UL	
NETWORK CAMERA	XNO-L6080R	E158873-A218-UL	
NETWORK CAMERA	PNM-7000VD	E158873-A220-UL	
NETWORK VIDEO ENCODER	SPE-410, SPE-410A* (* is Blank or N or P, N = NTSC, P = PAL)	E158873-A222-UL	
NETWORK VIDEO ENCODER	SPE-1610, SPE-1610A* (* is Blank or N or P, N = NTSC, P = PAL), NVE3016	E158873-A223-UL	
NETWORK POSITIONING CAMERA	TNU-6320	E158873-A224-UL	
Network Video Recorder	QRN-1610S	E158873-A225-UL	
NETWORK CAMERA	QNE-7080RV, QNE-6080RV	E158873-A226-UL	
NETWORK CAMERA	PNM-9000VQ	E158873-A227-UL	
Network Camera	XNP-6550RH, XNP-6320RH, XNP-6250RH, QNP-6230RH	E158873-A229-UL	
NETWORK CAMERA	PNM-9320VQP, PNM-9321VQP.	E158873-A230-UL	
NETWORK CAMERA	XNZ-6320	E158873-A231-UL	
NETWORK ENCODER	SPE-110N, SPE-110A* (* is Blank or N or P, N = NTSC, P = PAL)	E158873-A232-UL	
THERMAL POSITIONING CAMERA	TNU-4041T, TNU-4051T	E158873-A233-UL	
NETWORK CAMERA	PNM-9030V	E158873-A234-UL	
NETWORK CAMERA	TNV-7010RC	E158873-A235-UL	
NETWORK CAMERA	XND-8081VZ, XND-8081FZ, XND-6081VZ, XND-6081FZ	E158873-A236-UL	
DIGITAL COLOR CAMERA	HCF-8010V	E158873-A239-UL	
ANALOG CAMERA	HCO-6020R	E158873-A241-UL	
NETWORK CAMERA	XNV-6081, XNV-6081R, XNV-8081R	E158873-A242-UL	
NETWORK VIDEO RECORDER	TRM-810S, TRM-410S	E158873-A243-UL	
ANALOG CAMERA	HCD-6020R, HCD-6010	E158873-A244-UL	
NETWORK CAMERA	XND-6081V, XND-6081F, XND-6081RV, XND-6081RF, XND-8081RV, XND-8081RF	E158873-A245-UL	
NETWORK CAMERA	XND-L6080	E158873-A246-UL	
NETWORK CAMERA	TNO-6010M	E158873-A247-UL	
ANALOG CAMERA	SCO-6085R	E158873-A248-UL	
NETWORK CAMERA	PNM-9000VD	E158873-A249-UL	
NETWORK CAMERA	QND-6083R, QND-6082R, QND-6073R, QND-6072R,	E158873-A250-UL	

File		Volume	Page	Date:
E158873	Index	X1	10	12-Jan-20

	QND-6032R, QND-6022R, QND-6012R		
NETWORK CAMERA	QNE-8021R, QNE-8011R	E158873-A251-UL	
NETWORK CAMERA	QND-8021, QND-8011	E158873-A252-UL	
NETWORK CAMERA	QNO-8080R, QNO-8010R, QNO-8020R, QNO-8030R	E158873-A253-UL	
NETWORK CAMERA	QND-6021, QND-6011	E158873-A254-UL	
NETWORK CAMERA	QNO-6083R, QNO-6082R, QNO-6012R, QNO-6022R, QNO-6032R, QNO-6072R, QNO-6073R	E158873-A255-UL	
NETWORK CAMERA	QNV-6083R, QNV-6082R, QNV-6073R, QNV-6072R, QNV-6012R, QNV-6022R, QNV-6032R, QNV-6012RA.	E158873-A256-UL	
NETWORK CAMERA	QNV-8080R, QNV-8010R, QNV-8020R, QNV-8030R	E158873-A257-UL	
NETWORK CAMERA	QND-8080R, QND-8010R, QND-8020R, QND-8030R	E158873-A258-UL	
NETWORK CAMERA	QNF-8010	E158873-A259-UL	
NETWORK CAMERA	LNV-6012R, LNV-6022R, LNV-6032R	E158873-A260-UL	
NETWORK CAMERA	LNV-6072R	E158873-A261-UL	
NETWORK CAMERA	LND-6012R, LND-6022R, LND-6032R	E158873-A262-UL	
NETWORK CAMERA	LND-6072R	E158873-A263-UL	
NETWORK CAMERA	QNV-6024RM, QNV-6023R	E158873-A264-UL	
NETWORK CAMERA	LNO-6012R, LNO-6022R, LNO-6032R	E158873-A265-UL	
NETWORK CAMERA	LNO-6072R	E158873-A266-UL	
Digital Video Recorder	HRX-1621* (* is Blank or N or P : P=PAL, N=NTSC)	E158873-A267-UL	
Digital Video Recorder	HRX-821* (* is Blank or N or P : P=PAL, N=NTSC)	E158873-A268-UL	
NETWORK THERMAL CAMERA	TNO-3010T, TNO-3020T, TNO-3030T	E158873-A269-UL	
NETWORK CAMERA	PNM-9084QZ	E158873-A270-UL	
NETWORK CAMERA	XNP-6371RH	E158873-A275-UL	
NETWORK CAMERA	XNZ-L6320	E158873-A276-UL	
NETWORK CAMERA	PNM-9084RQZ*, PNM-9085RQZ* (* is Blank or N or P : P=PAL, N=NTSC)	E158873-A6001-UL	
NETWORK VIDEO RECORDER	WRN-1610S	E158873-A6002-UL	
NETWORK VIDEO RECORDER	WRN-810S* (* is Blank or N or P : P=PAL, N=NTSC)	E158873-A6003-UL	
NETWORK CAMERA	PNO-A9081R	E158873-A6007-UL	
NETWORK CAMERA	PNV-A9081R	E158873-A6008-UL	
NETWORK CAMERA	PND-A9081RF	E158873-A6009-UL	
NETWORK CAMERA	PND-A9081RV	E158873-A6012-UL	

CERTIFICATE OF COMPLIANCE

Certificate Number E158873
Report Reference E158873-A6012-UL
Issue Date 2020-JANUARY-14

Issued to: Hanwha Techwin Co Ltd
6, Pangyo-ro 319beon-gil, Bundang-gu, Seongnam-si Gyeonggi-do 13488 KOREA

**This certificate confirms that
representative samples of**

INFORMATION TECHNOLOGY EQUIPMENT INCLUDING
ELECTRICAL BUSINESS EQUIPMENT
NETWORK CAMERA: PND-A9081RV

Have been investigated by UL in accordance with the
Standard(s) indicated on this Certificate.

Standard(s) for Safety: UL 60950-1 and CAN/CSA C22.2 No. 60950-1-07-(Information
Technology Equipment - Safety - Part 1: General Requirements)

Additional Information: See the UL Online Certifications Directory at
<https://iq.ulprospector.com> for additional information.

This *Certificate of Compliance* does not provide authorization to apply the UL Mark. Only the UL Follow-Up Services Procedure provides authorization to apply the UL Mark.

Only those products bearing the UL Mark should be considered as being UL Certified and covered under UL's Follow-Up Services.

Look for the UL Certification Mark on the product.



Bruce Mahrenholz, Director North American Certification Program
UL LLC

Any information and documentation involving UL Mark services are provided on behalf of UL LLC (UL) or any authorized licensee of UL. For questions, please contact a local UL Customer Service Representative at <http://ul.com/aboutul/locations/>



UL TEST REPORT AND PROCEDURE

Standard:	UL 60950-1, 2nd Edition, 2019-05-09 (Information Technology Equipment - Safety - Part 1: General Requirements) CAN/CSA C22.2 No. 60950-1-07, 2nd Edition, 2014-10 (Information Technology Equipment - Safety - Part 1: General Requirements)
Certification Type:	Listing
CCN:	NWGQ, NWGQ7 (Information Technology Equipment Including Electrical Business Equipment)
Complementary CCN:	N/A
Product:	NETWORK CAMERA
Model:	PND-A9081RV
Rating:	12 Vdc, 1.48 A or PoE (53 Vdc), 0.38 A
Applicant Name and Address:	HANWHA TECHWIN CO LTD 6, PANGYO-RO 319BEON-GIL, BUNDANG-GU SEONGNAM-SI GYEONGGI-DO 13488 KOREA

This is to certify that representative samples of the products covered by this Test Report have been investigated in accordance with the above referenced Standards. The products have been found to comply with the requirements covering the category and the products are judged to be eligible for Follow-Up Service under the indicated Test Procedure. The manufacturer is authorized to use the UL Mark on such products which comply with this Test Report and any other applicable requirements of UL LLC ('UL') in accordance with the Follow-Up Service Agreement. Only those products which properly bear the UL Mark are considered as being covered by UL's Follow-Up Service under the indicated Test Procedure.

The applicant is authorized to reproduce the referenced Test Report provided it is reproduced in its entirety.

UL authorizes the applicant to reproduce the latest pages of the referenced Test Report consisting of the first page of the Specific Technical Criteria through to the end of the Conditions of Acceptability.

Any information and documentation involving UL Mark services are provided on behalf of UL LLC (UL) or any authorized licensee of UL.

Prepared By: Sungil Kim / Project Handler

Reviewed By: Seulki Park / Reviewer

Supporting Documentation

The following documents located at the beginning of this Procedure supplement the requirements of this Test Report:

A. Authorization - The Authorization page may include additional Factory Identification Code markings.

B. Generic Inspection Instructions -

- i. Part AC details important information which may be applicable to products covered by this Procedure. Products described in this Test Report must comply with any applicable items listed unless otherwise stated in the body of this Test Report.
- ii. Part AE details any requirements which may be applicable to all products covered by this Procedure. Products described in this Test Report must comply with any applicable items listed unless otherwise stated in the body of each Test Report.
- iii. Part AF details the requirements for the UL Certification Mark which is not controlled by the technical standard used to investigate these products. Products are permitted to bear only the Certification Mark(s) corresponding to the countries for which it is certified, as indicated in each Test Report.

Product Description

NETWORK CAMERA intended for indoor use.

Electronic components were mounted on PWB and housed in plastic and metal enclosure and supplied by SELV and LPS.

Model Differences

N/A

Test Item Particulars

Equipment mobility	Fixed
Connection to the mains	N/A
Operating condition	continuous
Access location	operator accessible
Over voltage category (OVC)	OVC I
Mains supply tolerance (%) or absolute mains supply values	No direct connection
Tested for IT power systems	No
IT testing, phase-phase voltage (V)	N/A
Class of equipment	Class III (supplied by SELV)
Considered current rating of protective device as part of the building installation (A)	N/A
Pollution degree (PD)	PD 2
IP protection class	IP 52
Altitude of operation (m)	less than 2000 meters
Altitude of test laboratory (m)	less than 2000 meters
Mass of equipment (kg)	1.60

Technical Considerations

- The product was submitted and evaluated for use at the maximum ambient temperature (T_{ma}) permitted by the manufacturer's specification of : 50 °C
- The product was investigated to the following additional standards : IEC 62471
- The following are available from the Applicant upon request : Installation (Safety) Instructions / Manual

Additional Information

Original (4789196101)

- Maximum normal load: Continuous operation with IR LED on.

Additional Standards

The product fulfills the requirements of: IEC 62471:2006

Markings and Instructions

Clause Title	Marking or Instruction Details
Power rating - Ratings	Ratings (voltage, frequency/dc, current)
Power rating - Company identification	Listees or Recognized companys name, Trade Name, Trademark or File Number
Power rating - Model	Model Number
Fuses - Rating	Rated current and voltage and type located on or adjacent to fuse or fuseholder.
Replaceable batteries	"CAUTION: Risk of Explosion if Battery is replaced by an Incorrect Type. Dispose of Used Batteries According to the Instructions."
Website Manual -3	ITE is to be connected only to PoE networks without routing to the outside plant. Unit is intended for installation in a Network Environment 0 as defined in IEC TR 62102. As such, associated Ethernet wiring shall be limited to inside the building.
Hard Copy	A. IMPORTANT B. Please check 'Manuals' from our website, before connecting to the supply. C. Company website URL (https://www.~~)
Website Manual -1	This product is intended to be supplied by a Listed Power Supply Unit marked "Class 2" or "LPS" and rated from 12 Vdc 1.48 A or PoE, 0.38 A. (PND-A9081RV)
Website Manual -2	The wired LAN hub providing power over the Ethernet (PoE) in accordance with IEEE 802-3at shall be a UL Listed device with the output evaluated as a Limited Power Source as defined in UL60950-1.

Special Instructions to UL Representative

N/A

BD1.0	TABLE: Production-Line Testing Requirements					
BD1.1	Electric Strength Test Special Constructions – Refer to Generic Inspection Instructions, Part AC for further information.					
Model	Component	Removable parts	Test probe location	Test V rms	Test V dc	Test Time, s
N/A	N/A	N/A	N/A	N/A	N/A	N/A
BD1.2	Earthing Continuity Test Exemptions – This test is not required for the following models:					
	All models					
BD1.3	Electric Strength Test Exemptions – This test is not required for the following models:					
	All models					
BD1.4	Electric Strength Test Component Exemptions – The following solid-state components may be disconnected from the remainder of the circuitry during the performance of this test:					

BE1.0	Sample and Test Specifics for Follow-Up Tests at UL				
Model	Component	Material	Test	Sample (s)	Test Specifics

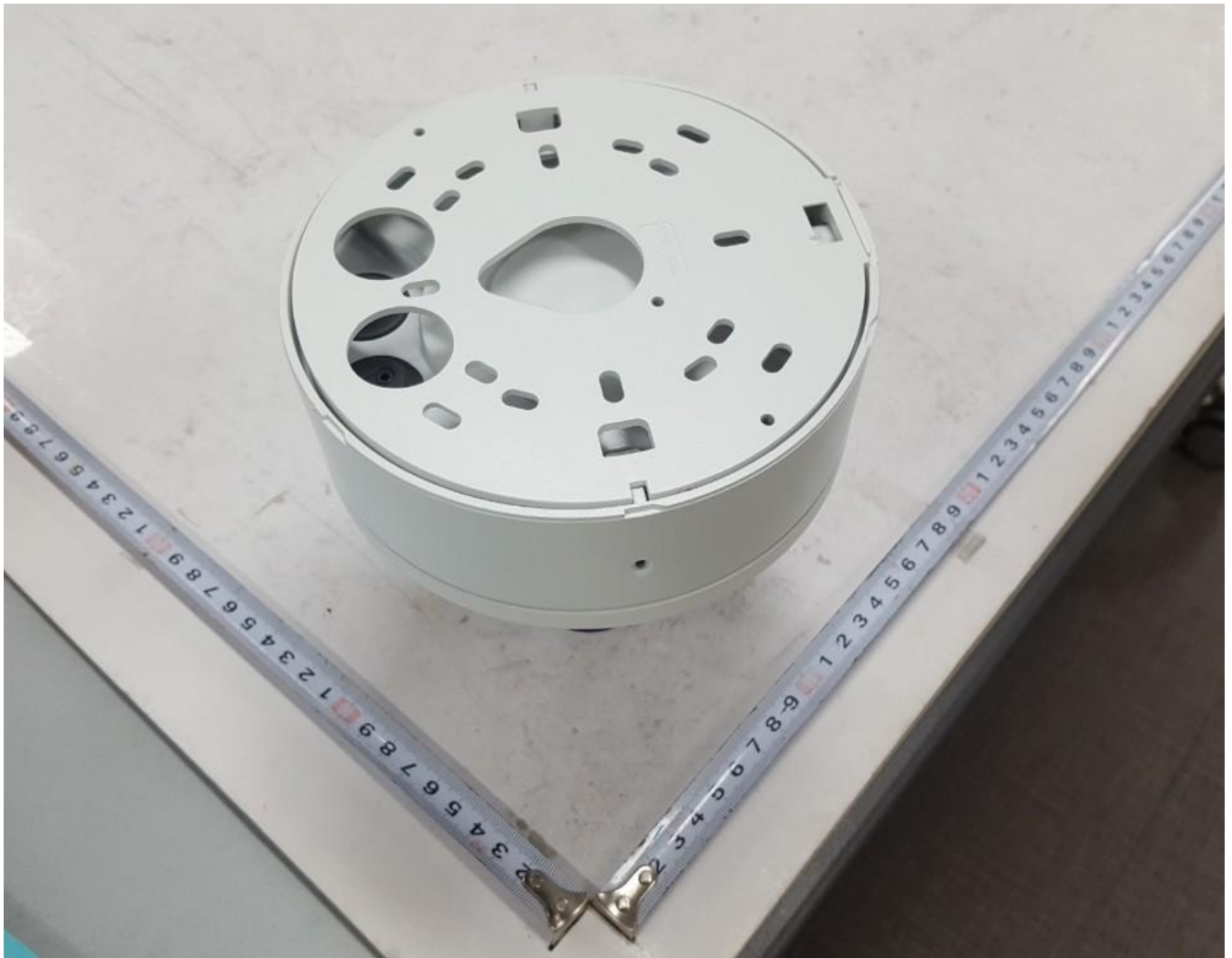
1.5.1	TABLE: List of critical components					Pass
Object / part No.	Manufacturer/ trademark	Type / model	Technical data	Product Category CCN(s)	Mark(s) of conformity	Supplement ID
Enclosure (Metal)	Interchangeable	Interchangeable	Aluminium, Min. 2.0 mm thickness. see enclosure for dimension.	-	-	
Cover-Dome (Polycarbonate)	MITSUBISHI ENGINEERING- PLASTICS CORP	S-3000(&6)(f1)	Min. 1.8 mm thickness, rated Min. V-2, 115deg. C, see enclosure for dimension.	QMFZ2/8	UL (E41179)	
Internal Plastic Part Materials	LOTTE ADVANCED MATERIALS CO LTD	NH-1035(+)	Min. 1.5 mm thickness, rated Min. V-0, 80 deg. C.	QMFZ2/8	UL (E115797)	
Fuse (F1)	LITTELFUSE INC	449*	125 V, 2.5 A	JDYX2	UL (E10480)	
Transformer (T3)	Group-Tek. Electronic Technology Co Ltd	PDT25125SR	130 deg.C, see enclosure for detail	-	-	
LINE FILTER (T2,T4)	Group-Tek. Electronic Technology Co Ltd	PCM10029R	6 mH, 125 deg.C	-	-	
Motor (Zoom, Focus, motor)	Xiamen Leading Optics CO., Ltd.	MZ117BP451016IC RD19R2	Operation Voltage DC 4.5 V, 140mA Max pulse rate 400-900 pps	-	-	
IR LED (4 EA, LD2 to LD5)	OSRAM	SFH4715A	Vf=2.2Vdc(max), Angle:(90 °)	-	-	
Lithium Battery (BAT1)	SEIKO INSTRUMENT INC MICRO-ENERGY DIV	ML414H	Lithium (Coin), Rechargeable, Max. 3.4 Vdc, Nominal Capacity 1.0mAH Maximum charging current 300 mAh	BBCV2	UL (MH15628)	

Opto-coupler (LS1)	LITE-ON TECHNOLOGY CORP	LTV-816	Isolation Voltage: 5 000. Max. Operation Temperature: 110 deg.C	FPQU2/8	UL (-+Component&objid=1073754239&cfgid=1073741824&version=versionless&parent_id=1073754190&sequence=1" E113898)	
Thermal Pad	KOMOTECH CO LTD	p://iq.ul.com/ul/cert.aspx?ULID=100820408" \t "_blank" KGP-1(a)	Min. 0.2 mm thickness, rated V-0, 150 deg.C	QMFZ2/8	UL (E245303)	
Internal Wiring (Secondary)	Interchangeable	Interchangeable	FEP, PTFE, PVC, TFE, neoprene, polyimide or marked VW-1; Min. 30 V, 80 deg.C	AVLV2	UL	
Cable	Interchangeable	Interchangeable	FEP, PTFE, PVC, TFE, neoprene, polyimide or marked VW-1; Min. 30 V, 80 deg.C	AVLV2	UL	
PWB	HANNSTAR BOARD CORP	MV-4	Min. V-0, 130 deg.C.	ZPMV2/8	UL (E89382)	
PWB (Alternate)	Interchangeable	Interchangeable	Min. V-0, 130 deg.C.	ZPMV2/8	UL	
Label	Interchangeable	Interchangeable	Min. 50 deg.C if max. surface temperature not specified.	PGDQ2 or PGJI2	UL	

Enclosures

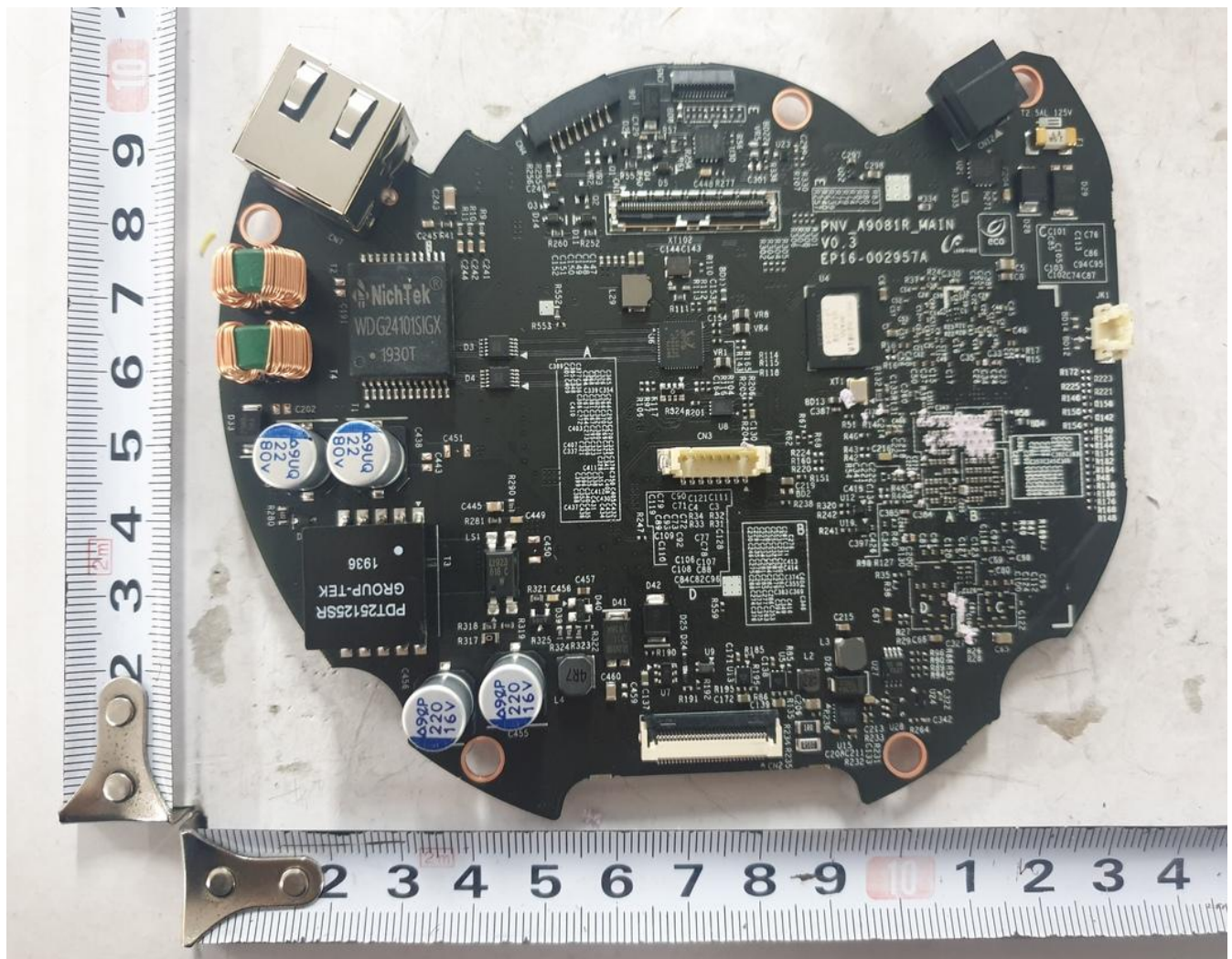
Type	Supplement Id	Description
Photographs	03-01	Overall -1
Photographs	03-02	Overall -2
Photographs	03-03	Internal -1
Photographs	03-04	Internal -2
Photographs	03-05	Main board (Top)
Photographs	03-06	Main board (Bottom)
Photographs	03-07	LED board (Top)
Photographs	03-08	LED board (Bottom)
Manuals	06-01	Manual
Miscellaneous	07-01	Enclosure dimension
Miscellaneous	07-02	Transformer (T3) spec
Miscellaneous	07-03	Dual language safety labeling CRD
Miscellaneous	07-04	Label

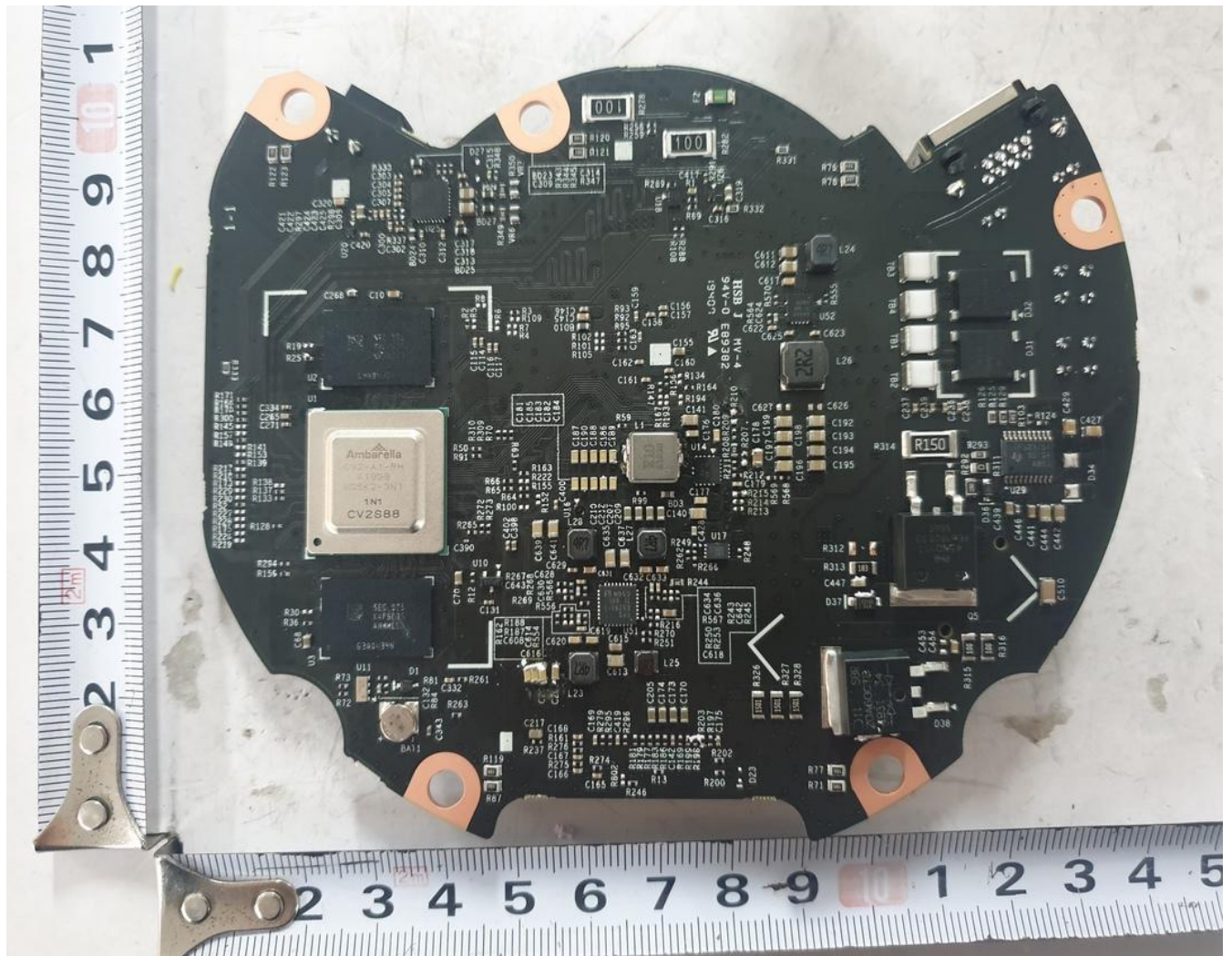
















overview

IMPORTANT SAFETY INSTRUCTIONS

1. Read these instructions.
2. Keep these instructions.
3. Heed all warnings.
4. Follow all instructions.
5. Do not use this apparatus near water.
6. Clean the contaminated area on the product surface with a soft, dry cloth or a damp cloth.
(Do not use a detergent or cosmetic products that contain alcohol, solvents or surfactants or oil constituents as they may distort or cause damage to the product.)
7. Do not block any ventilation openings. Install in accordance with the manufacturer's instructions.
8. Do not install near any heat sources such as radiators, heat registers, stoves, or other apparatus (including amplifiers) that produce heat.
9. Do not defeat the safety purpose of the polarized or grounding-type plug. A polarized plug has two blades with one wider than the other. A grounding type plug has two blades and a third grounding prong. The wide blade or the third prong are provided for your safety. If the provided plug does not fit into your outlet, consult an electrician for replacement of the obsolete outlet.
10. Protect the power cord from being walked on or pinched particularly at plugs, convenience receptacles, and the point where they exit from the apparatus.
11. Only use attachments/ accessories specified by the manufacturer.
12. Use only with the cart, stand, tripod, bracket, or table specified by the manufacturer, or sold with the apparatus. When a cart is used, use caution when moving the cart/ apparatus combination to avoid injury from tip-over.
13. Unplug this apparatus during lightning storms or when unused for long periods of time.
14. Refer all servicing to qualified service personnel. Servicing is required when the apparatus has been damaged in any way, such as power-supply cord or plug is damaged, liquid has been spilled or objects have fallen into the apparatus, the apparatus has been exposed to rain or moisture, does not operate normally, or has been dropped.
15. This product is intended to be supplied by a Listed Power Supply Unit marked "Class 2" or "LPS" and rated from 12 Vdc, 1.48 A or PoE, 0.38 A. (PNO-A9081RV/RF)
16. This product is intended to be supplied by a Listed Power Supply Unit marked "Class 2" or "LPS" and rated from 12 Vdc, 1.56 A or PoE, 0.38 A. (PNV-A9081R)
17. This product is intended to be supplied by a Listed Power Supply Unit marked "Class 2" or "LPS" and rated from 12 Vdc, 1.5 A or PoE, 0.4 A. (PNO-A9081R)
18. This product is intended to be supplied by a Listed Power Supply Unit marked "Class 2" or "LPS" and rated from 12 Vdc, 1.15 A or PoE, 0.32 A. (PNS-A9001)
19. This product is intended to be supplied by isolation power.
20. If you use excessive force when installing the product, the camera may be damaged and malfunction. If you forcibly install the product using non-compliant tools, the product may be damaged.
21. Do not install the product in a place where chemical substances or oil mist exists or may be generated. As edible oils such as soybean oil may damage or warp the product, do not install the product in the kitchen or near the kitchen table.
This may cause damage to the product.



22. When installing the product, be careful not to allow the surface of the product to be stained with chemical substance.
Some chemical solvents such as cleaner or adhesives may cause serious damage to the product's surface.
23. If you install/disassemble the product in a manner that has not been recommended, the production functions/ performance may not be guaranteed.
Install the product by referring to "Installation & connection" in the user manual.
24. Installing or using the product in water can cause serious damage to the product.
25. Although a rapid change in temperature could cause frost inside the dome, there will be no problem with the video.

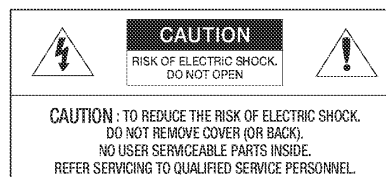
WARNING

TO REDUCE THE RISK OF FIRE OR ELECTRIC SHOCK, DO NOT EXPOSE THIS PRODUCT TO RAIN OR MOISTURE. DO NOT INSERT ANY METALLIC OBJECT THROUGH THE VENTILATION GRILLS OR OTHER OPENINGS ON THE EQUIPMENT.

Apparatus shall not be exposed to dripping or splashing and that no objects filled with liquids, such as vases, shall be placed on the apparatus.

To prevent injury, this apparatus must be securely attached to the Wall/ceiling in accordance with the installation instructions.

CAUTION



EXPLANATION OF GRAPHICAL SYMBOLS



The lightning flash with arrowhead symbol, within an equilateral triangle, is intended to alert the user to the presence of "dangerous voltage" within the product's enclosure that may be of sufficient magnitude to constitute a risk of electric shock to persons.



The exclamation point within an equilateral triangle is intended to alert the user to the presence of important operating and maintenance (servicing) instructions in the literature accompanying the product.

overview

Class I construction

An apparatus with CLASS I construction shall be connected to a MAINS socket outlet with a protective earthing connection.

Battery

Batteries (battery pack or batteries installed) shall not be exposed to excessive heat such as sunshine, fire or the like.

The battery cannot be replaced.

Disconnection Device

Disconnect the main plug from the apparatus, if it's defected. And please call a repair man in your location.

When used outside of the U.S., it may be used HAR code with fittings of an approved agency is employed.

CAUTION

RISK OF EXPLOSION IF BATTERY IS REPLACED BY AN INCORRECT TYPE.
DISPOSE OF USED BATTERIES ACCORDING TO THE INSTRUCTIONS.

ATTENTION

IL Y A RISQUE D'EXPLOSION SI LA BATTERIE EST REMPLACÉE PAR UNE BATTERIE DE TYPE INCORRECT.
METTRE AU REBUT LES BATTERIES USAGÉES CONFORMÉMENT AUX INSTRUCTIONS.

CAUTION

These servicing instructions are for use by qualified service personnel only.
To reduce the risk of electric shock do not perform any servicing other than that contained in the operating instructions unless you are qualified to do so.

Please use the input power with just one camera and other devices must not be connected.

The ITE is to be connected only to PoE networks without routing to the outside plant.

The wired LAN hub providing power over the Ethernet (PoE) in accordance with IEEE 802.3at shall be a UL Listed device with the output evaluated as a Limited Power Source as defined in UL60950-1.

Unit is intended for installation in a Network Environment 0 as defined in IEC TR 62102. As such, associated Ethernet wiring shall be limited to inside the building.

Please read the following recommended safety precautions carefully.

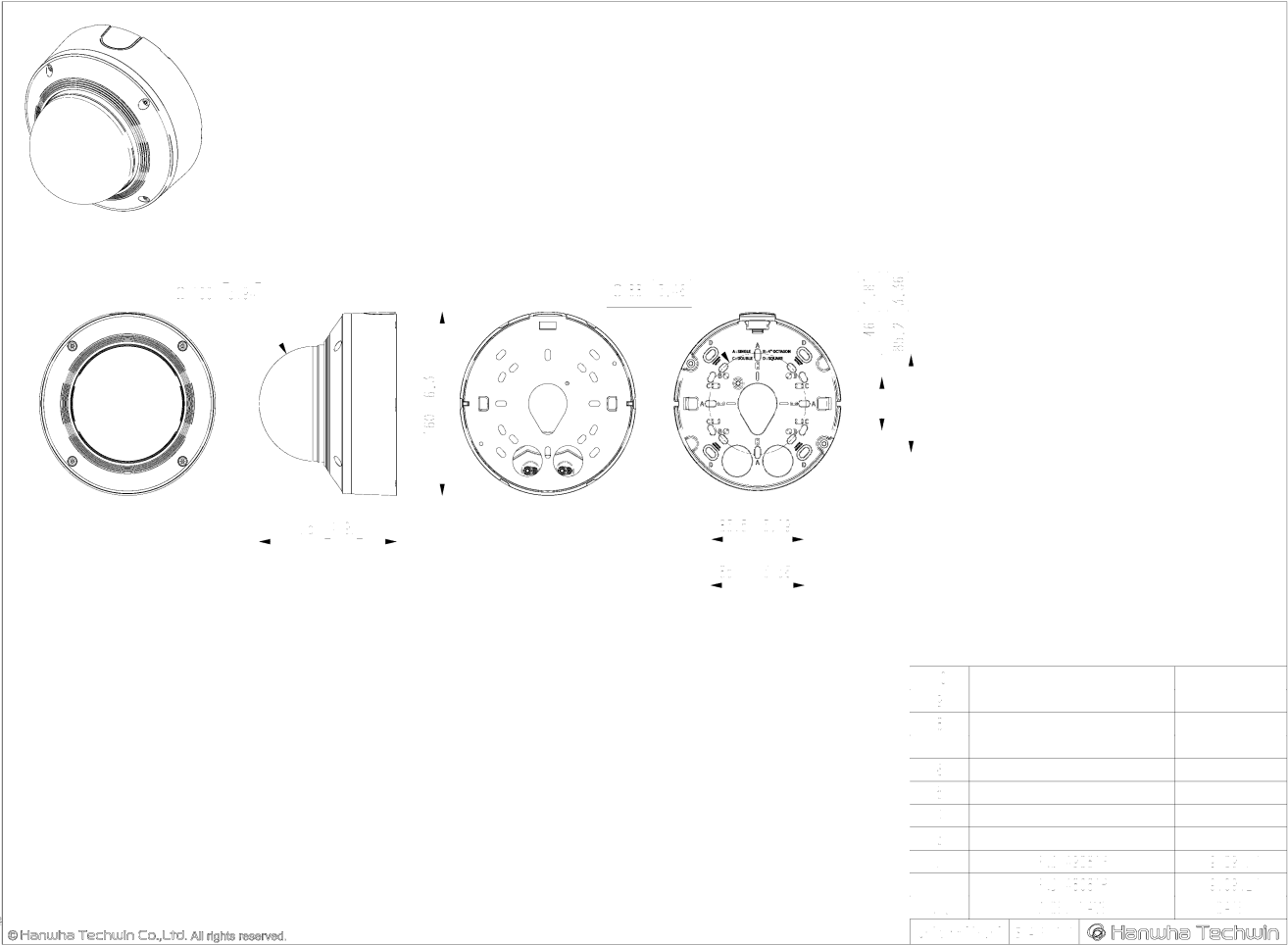
- Do not place this apparatus on an uneven surface.
- Do not install on a surface where it is exposed to direct sunlight, near heating equipment or heavy cold area.
- Do not place this apparatus near conductive material.
- Do not attempt to service this apparatus yourself.
- Do not place a glass of water on the product.
- Do not install near any magnetic sources.
- Do not block any ventilation openings.
- Do not place heavy items on the product.
- Please wear protective gloves when installing/removing the camera.
The high temperature of the product surface may cause a burn.

User's Manual is a guidance book for how to use the products.

The meaning of the symbols are shown below.

- Reference : In case of providing information for helping of product's usages
- Notice : If there's any possibility to occur any damages for the goods and human caused by not following the instruction
- × Please read this manual for the safety before using of goods and keep it in the safe place.

We do not guarantee the quality of third-party products (e.g. lenses, accessories) that you separately purchase.



GROUP-TEK®



承认书

SPECIFICATION FOR APPROVAL

CUSTOMER	
MODEL NO.	EP23-001075A
PART NAME	POWER TRANSFORMER
PART TYPE	PDT25125SR
REV	X7
SIGNATURE	<div> <div> 制图: Drawn by </div> <div> 2020-01-07 Lei Wan </div> <div> 审核: Checked by </div> <div> 2020-01-07 GX Song </div> <div> 批准: Approved by </div> <div> 2020-01-07 Jiang Wang </div> </div>
CUSTOMER APPROVAL	<div> 阮志恒: SIGNET </div> <div> 戴0: SIGNATURE </div>

拐提攢旒壘某隼槐梟毒泐涓漈漈
 SHENZHEN GROUP-TEK ELECTRONICS TECHNOLOGY CO., LTD
 地 址：深圳市宝安区石岩街道应人石工业区伟泰路 1 栋 (P. O: 518108)
 ADD: No. 1 Block, WeiTai Rd. Ying Ren Shi Industry Park, Shi Yan Sub-District, Bao'An ShenZhen.
 TEL: +86-755-29810619 29810976 FAX: +86-755-29810159
 Http://www.group-tek.com E-mail:sale1@group-tek.com

A Leading Supplier of Magnetic Components

PDT25125SR

1. Revision History:

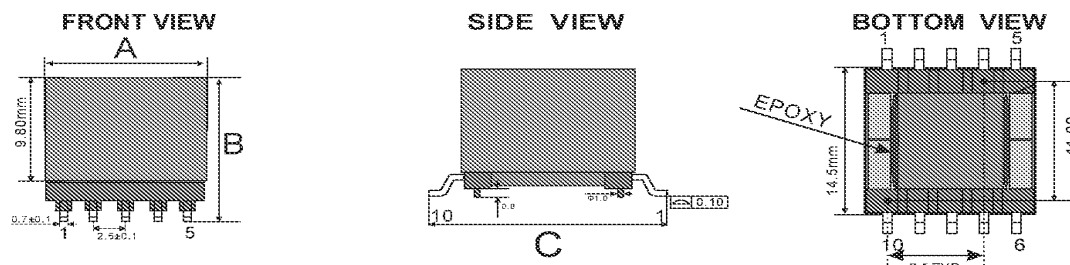
[illegible]

GROUP-TEK®

A Leading Supplier of Magnetic Components

PDT25125SR

2. Mechanical Dimensions:



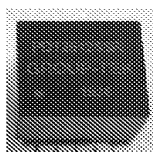
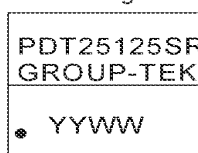
Note:

1. Wrap 2Ts of 7mm kapton tape around the finished part.
2. Fixed the cores with glue, and fixed the case with glue.

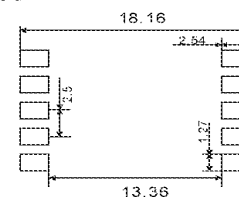
Unit: mm

A MAX	B MAX	C MAX
15.0	14.8	17.8

Laser Marking information



Suggested PCB Pad Layout



3. Electrical Characteristics :

Specifications: at 25°C.		Operating Temperature -40 to +105°C*	
NO.	ITEM	TEST CONDITION	SPECIFICATION
1	Inductance	(1-3) @100KHz, 1.0V	41.0uH ±10%.
2	Leakage Inductance	(1-3) @100KHz, 1.0V with shorted other pins.	0.67uH Max.
3	DCR	(1-3) @ 25°C	62.0mΩ Max.
4		(9-6) @ 25°C	20.0mΩ Max..
5		(10-7) @ 25°C	23.0mΩ Max.
6		(4-5) @ 25°C	120.0mΩ Max.
7	HI-POT	PRI TO SEC	2250Vac 5mA 3Sec.
8	TURN RATIO	(1-3):(9-6):(10-7)	2.67:1.0:1.0±2%.
9	TURN RATIO	(1-3):(4-5)	2.67:1.0±2%.
10	INSULATION RESISTANCE	PRI--SEC DC500V	100MΩ Min.
11		PRI--CORE DC500V	100MΩ Min.
12		SEC--CORE DC500V	100MΩ Min.

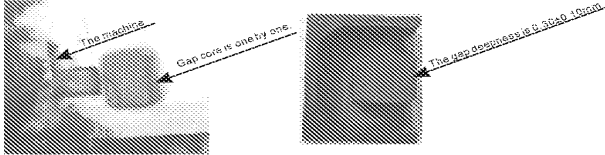
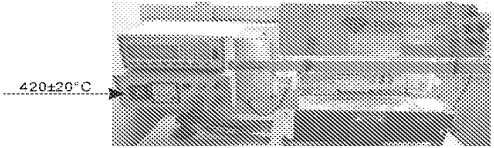
*Remark:Product surface temperature:-40 to +125°C,at 25°C.

GROUP-TEK®

A Leading Supplier of Magnetic Components

PDT25125SR

4.Overhauling List.

NO.	ITEM	SPECIFICATION
1	Tape turns	2T
2	Winding turns	P1-1:16T S1-1:6T P1-2:16T S1-2:6T P2:6T
3	Pins order/Pin connection .	1T
4	Marking Information	<div> PDT25125SR GROUP-TEK ● DATE CODE </div>
5	Gap the center leg	
6	Solder Temperature	

GROUP-TEK[®]

A Leading Supplier of Magnetic Components

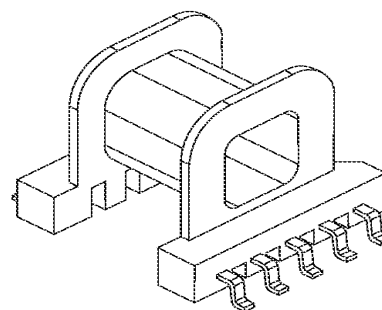
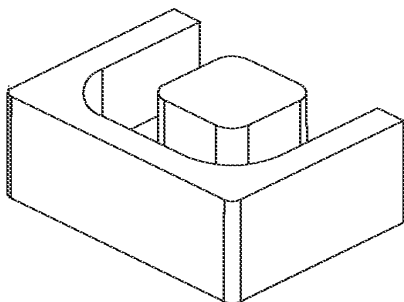
PDT25125SR

5. Winding Information:

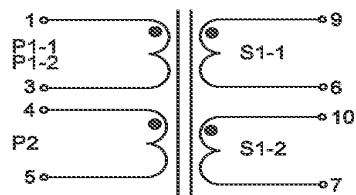
WINDING SEQ.	ST-FN	WIRE/FOIL	TURNS	WRAP INSUL.	MARGIN TAPE	SLEEVE	NOTE
P1-1	1--3	4*0.21mm 2UEW	16	1T w8.0mm (kapton tape)	N/A	N/A	1
S1-1	9--6	4*0.27mm 2UEW (Red)	6	1T w8.0mm (kapton tape)	N/A	N/A	1
P1-2	1--3	2*0.21mm 2UEW (Natural)	16	1T w8.0mm (kapton tape)	N/A	N/A	1
S1-2	10--7	4*0.27mm 2UEW	6	1T w8.0mm (kapton tape)	N/A	N/A	1
P2	4--5	3*0.17mm 2UEW	6	2T w8.0mm (kapton tape)	N/A	N/A	1

NOTE :

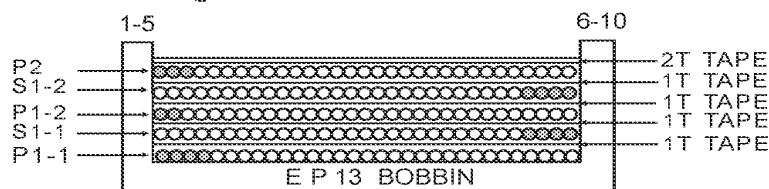
1. - Place the bobbin pin 1 left side of operator.



6. Schematic:



7. Winding construction



: Start terminal

GROUP-TEK®

A Leading Supplier of Magnetic Components

PDT25125SR**8. Material List:**

NO.	ITEM.	MATERIALS	SUPPLIERS/MANUFACTURERS	UL FILE NO.
1	BOBBIN	PHENOLIC T375J UL RATING: 94V-0	CHANG CHUN PLASTICS CO LTD.	QMFZ2.E59481
2	CORE	TP2A	TTS Technology Co.,Ltd.	N/A
3	WIRE	POLYURETHANE ENAMELED TYPE NO. 2UEW THERMAL RATING: 180°C	ZHUHAI SUNTEK WIRE CO LTD	OBMW2.E234867
4	TAPE	ADHESIVE POLYESTER TAPE TYPE NO.: CT*(c)(g) THERMAL RATING: 130°C yellow tape for inner coils	Jing Jiang yahu a pressure sensitive glue Co., Ltd	E165111
5	SOLDER	SN/CU: 99.3/0.7	Gao Xin stannum industry Co., Ltd	N/A
6	Glue	E-500(xx)	Dong Guan city eatto electronic material Co., Ltd	E218090
7	CASE	PHENOLIC T375J UL RATING: 94V-0	CHANG CHUN PLASTICS CO LTD.	QMFZ2.E59481

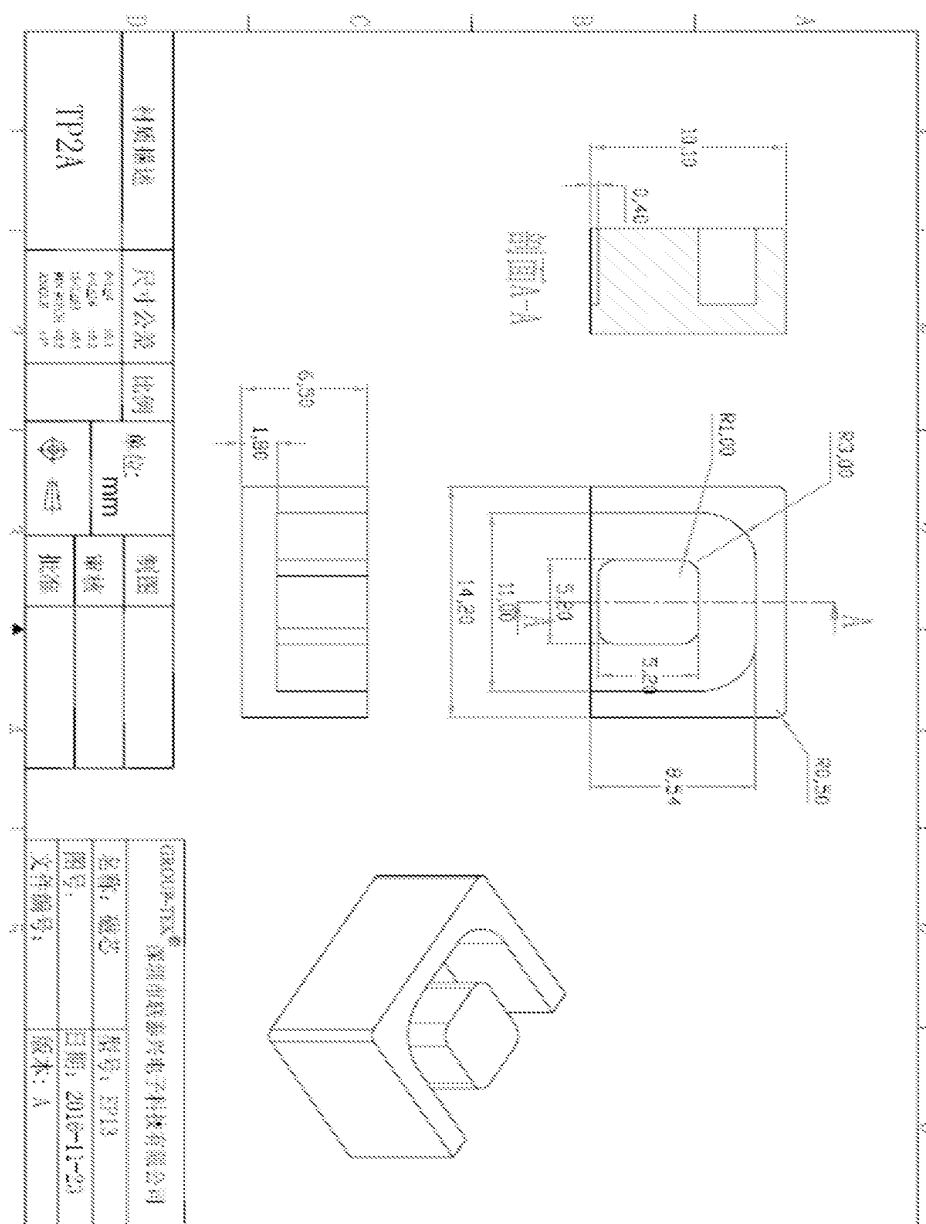
9. PACKING INFORMATION:

DESCRIPTION	QTY
PIECES PER REEL	150
PIECES PER POCKET	1
PIECES PER BOX	450
REEL PER BOX	3
GROSS WEIGHT PER BOX(KG)	TBD
NET WEIGHT PER BOX(KG)	TBD

GROUP-TEK®

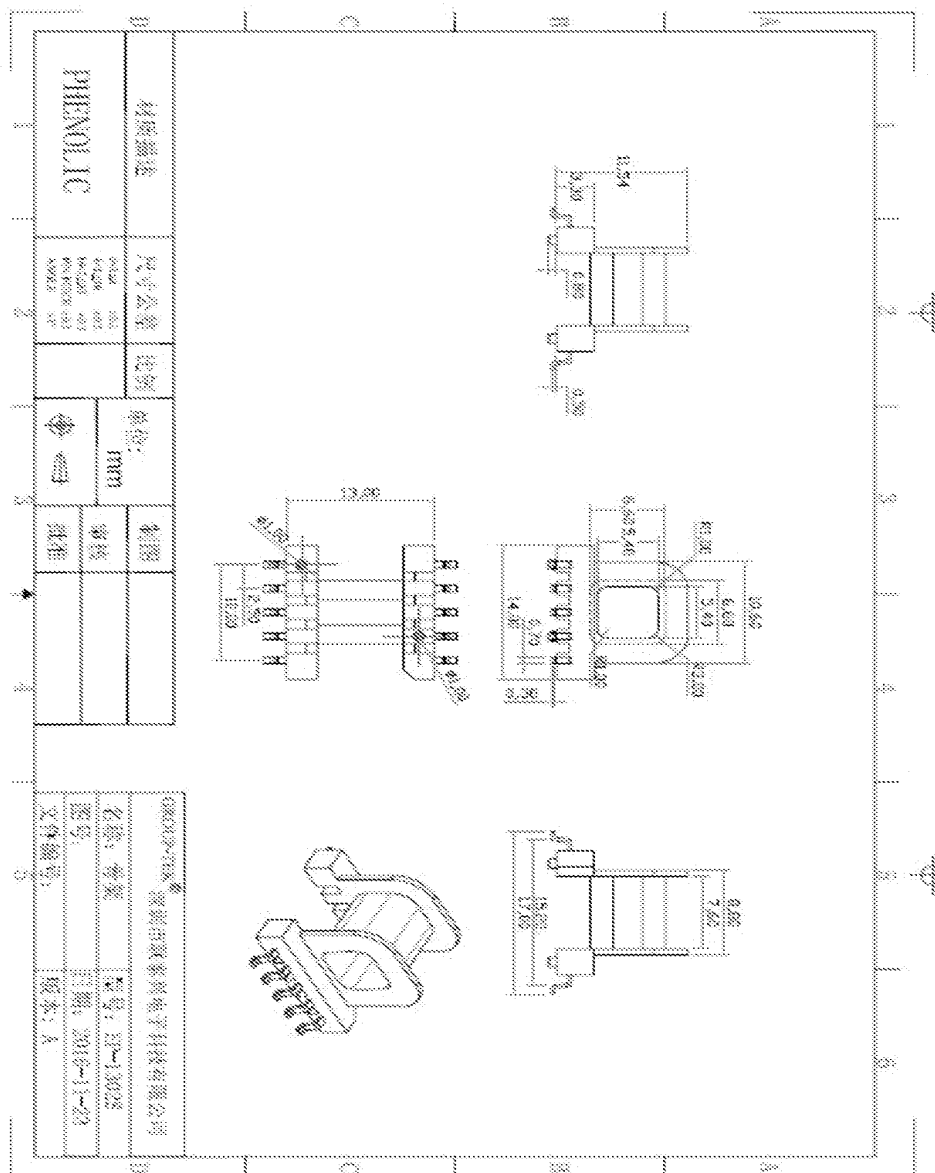
A Leading Supplier of Magnetic Components

PDT25125SR



GROUP-TEK®
A Leading Supplier of Magnetic Components

PDT25125SR



Project No. 4789196101

File E158873

Page 2

Compliance

Review

Conducted by: _____

Printed Name

Signature _____

Date _____

Clause/Par. Reference and Construction Requirement	Comply			Comments/Measurements	Inst. ID No.
	Yes	No	N/A		
Manufacturer has a method to manage distribution of products, IF all products with the Canadian certification mark are NOT going to include the dual language.	X			<p>Evaluation staff are to only verify that the manufacturer has a method to control distribution.</p> <p>Evaluation staff do not have to record the method of control nor are the evaluation staff expected to verify the effectiveness of the method of control. This requirement to verify that a method exists will be noted in the FUS Procedure. The UL Field Engineer will verify the method during surveillance.</p> <p>If the manufacturer is going to include the dual language on all products with the Canadian certification mark, then this item is N/A; no further action required.</p>	N/A



NETWORK CAMERA

MODEL: PND-A9081RV

DC12V 1.48A/

PoE(53V) 0.38A

M/C: PND-A9081RV/KAN Fac. ID: D



제조년월 S/N: [제조번호]

MAC ADDRESS: XX-XX-XX-XX-XX-XX

CAN ICES-3(A)/NMB-3(A)

HANWHA TECHWIN CO.,LTD.

MADE IN KOREA



NETWORK CAMERA

MODEL: PND-A9081RV

DC12V 1.48A/

PoE(53V) 0.38A

M/C: PND-A9081RV/KAN Fac. ID: D



제조년월 S/N: [제조번호]

MAC ADDRESS: XX-XX-XX-XX-XX-XX

CAN ICES-3(A)/NMB-3(A)

HANWHA TECHWIN CO.,LTD.

MADE IN KOREA



Test Record No. 1

1. Test result relate only to the items tested.
2. The manufacturer submitted representative production samples of NETWORK CAMERA, Model PND-A9081RV.
3. Only the test listed were considered necessary.

The following tests were conducted:

Tests performed (name of test and test clause):	Testing location:
	None
Input: Single-Phase (1.6.2)	
SELV Reliability Test Including Hazardous Voltage Measurements (2.2.2, 2.2.3, 2.2.4, Part 22 6.1)	
Determination of Working Voltage; Working Voltage Measurement (2.10.2)	
Loading - Wall and Ceiling Mounted Equipment (4.2.10)	
Battery (4.3.8)	
Heating (4.5.1, 1.4.12, 1.4.13)	
Component Failure (5.3.1, 5.3.4, 5.3.7)	
The following tests were waived:	Rationale for Waiving
Limited Power Source Measurements (2.5)	supplied by LPS

Test results are valid only for the tested equipment. These tests are considered representative of the products covered by this Test Report. The test methods and results of the above tests have been reviewed and found to be in accordance with the requirements in the Standard(s) referenced at the beginning of this Test Report.

The following supplements are provided as part of this Test Record. NOTE: These supplements are only available to the Applicant via the myUL™ Client Portal.

Type	Supplement Id	Description
Attachment	02-01	Datasheet