



**KNIGHT**  
FIRE & SECURITY  
alarm system components

Manufactured in the UK Since 1984



# TOTAL RELIABILITY FROM THE BIGGEST RANGE

**We are THE contact specialists**

Manufacturing bespoke items that can't be sourced elsewhere



**CUSTOM COLOURS  
& RAL MATCHING**



**EXTRA-LONG  
FLY LEADS**



**FIRE RESISTANT  
INTRUDER PRODUCTS**



**STEEL DOOR AND FRAME  
GRADED CONTACTS**

**knightfireandsecurity.com**

sales@knightfireandsecurity.com | 029 20 488129

Manufactured in the UK



**KNIGHT**  
FIRE & SECURITY  
alarm system components

- > You want the UK's largest range of versatile graded magnetic contacts, junction boxes, panic buttons, including multi-resistors? **You've got it!**
- > You want to see unbeatable quality backed up with accreditation? **You've got it.**
- > You want to work with a business which cares about its customers' needs? **You've got it.**

At Knight, we offer an unrivalled level of customer service, going out of our way to ensure the best in terms of design, quality, flexibility and aftercare. Our technical and sales support is second to none, and we are proud to be in a position where we're able to quickly react to any customer requirement.

By staying at the cutting edge of design and manufacture, we give our customers the peace of mind to know that they're always buying the best, whether it's BS EN50131 Grade 3 products for high end commercial or residential schemes,

Grade 2 for core security projects or Grade 1 for the DIY market. Our sister company Knight Precision Tooling undertakes CAD/CAM design at its purpose-built toolmaking facility, and all production and injection moulding of products is done at our factory in Cardiff.

Our moulding and engineering products are constantly used by many of the UK's highest profile manufacturing companies. Please contact us if you are interested in learning more about what we have to offer.

YouTube



**Knight don't just manufacture top quality alarm components! We are also industry leading injection moulders and tooling providers. Scan here for a behind the scenes look at our UK Manufacturing facility!!**

## The best service

Our sales team is happy to visit your site and learn all about your exact requirements – we're able to offer the best in technical advice and product selection, and our customer service is winning us plaudits across the industry. We are able, due to manufacturing all products in house to provide many bespoke options like alternative colours or extended lead lengths. Ask our sales team! We are also continually looking to develop and improve our product range and love to act on feedback to continue to be the best we can be.

## Quality counts

With UKAS Audited ISO 9001-2015 accreditation and an international supply network reaching over 30 countries, we manufacture all our products here in the UK without importing or reselling. We've been in the industry for nearly 35 years and have continually improved our working practices and product range in alignment with market requirements and industry trends. We are a member of the BSIA.

## Listening to you

We supply multi-functional products to meet the needs of distributors and installers - because that's what you told us you wanted. We increased our G3 range beyond anyone else in the market, in direct response to customer requirements. We keep ahead of the game by keeping an eye on what your business needs. We are continually improving and developing our range with our latest innovations, constantly looking to improve everything we do.

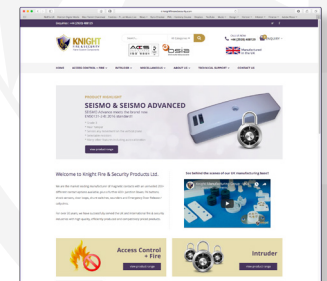
## New features and products

This new brochure showcases the popular Maxhunt and Euroflex ranges we now manufacture, along with our brand new stylish 'OCTONE' Sounder range, Grade 1, 2 and 3 Flush Steel Door / Frame Contacts, Waterproof Heavy Duty Angle Contacts, Man Down Devices and Omni Door Release Housings.

Our new web-site [www.knightfireandsecurity.com](http://www.knightfireandsecurity.com) now features advanced searching options to help you find the right product and additional technical information and installation videos.



Manufactured by a BSIA Member



## Knight proudly introduces the new EN50131 Grade 3 'Octone' range of internal sounders, speakers and strobes {PLUS YOU CAN ADD YOUR OWN COMPANY LOGO!}

Knight Fire & Security Products Ltd are delighted to announce the introduction of our new range of internal sounders, speakers and strobes for 2018. The product is available in the following 6 varieties and you can add your company logo to each – simply email your logo to: [logos@knightfireandsecurity.com](mailto:logos@knightfireandsecurity.com) and we will do the rest!



SPECIFICATION	
Grade + Env Class	EN50131 Grade 3 + Env Class II
Material	Polycarbonate
Lid/Rear Tamper	Microswitch / Screw
Speaker Type	Mylar 16 Ohm, 12 Watt
Sound Pressure	50mm - 85db, 87mm - 98db
Dimensions	115mm x 115mm x 40mm
Weight	290g
Temperature Range	-40c to +50c
Colour	White

PART CODE	DESCRIPTION	ENTRY TONE	GRADE	ENVIRO CLASS
OCT10	Octone Speaker (87mm Speaker)	No	3	II
OCT20	Octone Speaker (50mm Speaker)	No	3	II
OCT30	Octone Sounder (87mm Speaker)	Yes	3	II
OCT40	Octone Sounder (50mm Speaker)	Yes	3	II
OCT30S	Octone Sounder (87mm Speaker +Strobe)	Yes	3	II
OCT40S	Octone Sounder (50mm Small Speaker +Strobe)	Yes	3	II

### FEATURES

Unique, modern, sleek aesthetics

Send us your own company logo for the front lens as the perfect reminder of your company's service

Choose between large or small sounder, large or small speaker and optional strobe

Surface removal tamper and lid tamper

Screw fastened cover

Concealed wire clamping terminals

We provide a choice of extension speakers, from the basic rectangular shape to the oval, small unobtrusive EN50131 Grade 3 teletone speaker, I30.

Product Code	Description	Grade	Dimensions	Enviro class
I10	Extension Speaker 16 Ohm	1	120x120x50mm	II
I20	Extension Speaker with Tamper 16 Ohm	3	120x120x50mm	II
I30	Small Teletone Speaker 16 Ohm	3	100x67x32mm	II
I40	Dual-Tone Hi-Lo Sounder	3	120x120x50mm	II

### Features

- Material: ABS
- Tamper: TACT /Microswitch
- Speaker Type: 16 Ohm, 12 Watt
- Speaker Size: I10/I20 89mm I30 45mm
- Sound Pressure: Speakers 92dBA/1m Buzzer 90dBA/30cm I30 86dBA/50cm

G3



I30

### I40 Dual-Tone Hi-Lo Sounder

- High Level: Alarm Warning
- Low Level: Entry/Exit Warning
- Volume Control on Low Level
- Microswitch Tamper

G1

G3



I10/I20/I40



## AR SERIES: Graded contacts for steel door / window / frame installations

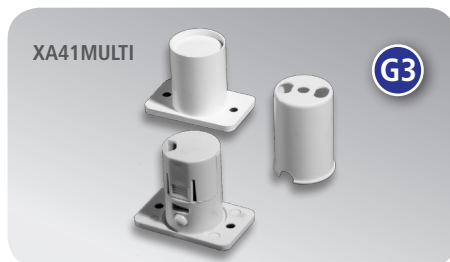
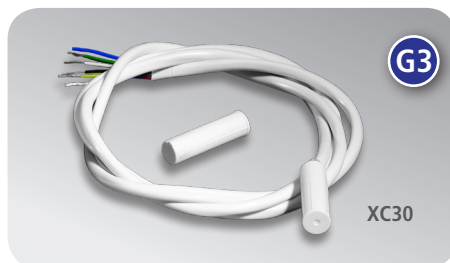
Knight are pleased to announce a new range of EN50131-2-6 Grades 1, 2 and 3 Flush contacts, specifically designed and tested for reliable operation within steel / ferrous doors, windows or frames. The bespoke designs minimise the effects of steel on magnetic fields, thus maintaining optimum operating gaps for your installations.



PART CODE	GRADE	ENV CLASS	DESCRIPTION
AR02	1	II	Push fit, single reed, flush, 20mm dia, 2 terminals, ~24mm OG
AR03	2	III	Push fit, single reed, flush, 20mm dia, 500mm cable, ~15mm OG
AR04*	3	III	Push fit, single reed, flush, 20mm dia, 5mm OG, Magnetic Interference Detection, built in resistors

\*Add resistor value to end of code

## Flush Contacts | Grade 3



## Flush Contacts | Grade 3

A full range of Flush Contacts is available, including Grade 2 and Grade 3 Multi-Resistor options. Integral resistors can be fitted to your requirements on all ranges. All items are built with the utmost care at our purpose-designed manufacturing plant in the UK.

Product Code	Description	Operating Gap	Dimensions	Enviro class	Shared Zone OK	Multi Resistor
<b>GRADE 3</b>						
XA41MULTI	4-Terminal. Tamper and Selectable resistors Rect Plate – Biased. Can be used on Shared Zone	15mm	20mm dia	II	✓	✓
XA51MULTI	4-Terminal. Tamper and Selectable resistors Round Plate – Biased. Can be used on Shared Zone	15mm	20mm dia	II	✓	✓
XC30*	6-Core Potted Single Reed Pencil Type With Resistors – Biased	7mm	8mm dia	III	✓	*
YA40	Large OG Flush Potted G3 With Selectable Resistors	25mm	20mm dia	III	✓	✓
YA90	Large OG Flush Potted G3 with Selectable Resistors and Metal Plate	25mm	25mm dia	III	✓	✓

\* Add resistor value to end of code

### Features

- All contacts can be used on shared zones
- High Quality, reliable reeds
- Material: ABS or Stainless Steel
- Voltage Range: 1–100V DC 125V AC max
- Switching Current: 500mA Max DC 500mA Max AC
- Temp Range: –40°C to +50°C

### Colour Options

- ☐ White
- ☐ Brown (add B to code)
- ☐ Black (add BK to code)



YouTube

Scan for "Install" video guide.



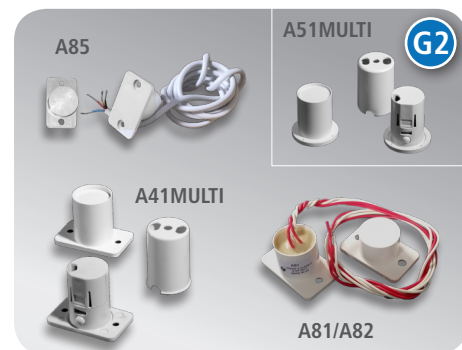
Please ask if you need:

- Non-standard colours
- **NON-STANDARD CABLE LENGTHS**
- For resistor values see rear of brochure

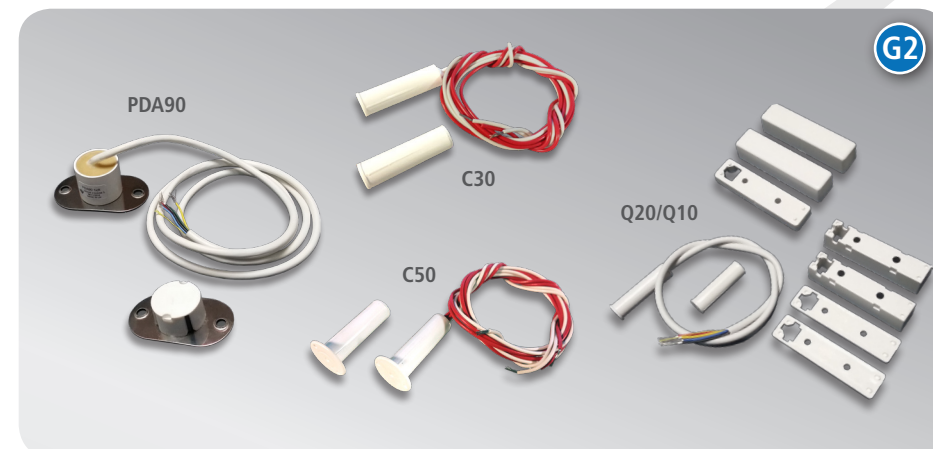
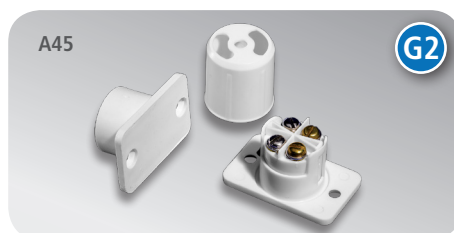


Product Code	Description	Operating Gap	Dimensions	Enviro class
<b>GRADE 2</b>				
A41MULTI	4-Terminal With Tamper and Selectable resistors and Rect Plate. Can be used on Shared Zone	14mm	20mm dia	II
A51MULTI	4-Terminal With Tamper and Selectable resistors and Round Plate. Can be used on Shared Zone	14mm	20mm dia	II
A45	4-Terminal Single Reed With TACT Tamper	14mm	20mm dia	II
A81	4-Wire Single Reed Quickfit Potted	14mm	20mm dia	III
A82	4-Wire Double Reed Quickfit Potted	14mm	20mm dia	III
A85	4-Core Single Reed Quickfit Potted	14mm	20mm dia	III
PDA40*	6-Core Single Reed Quickfit Potted With Resistors	14mm	20mm dia	III
PDA90*	6-Core Large Single Reed Potted With Metal Plate and Resistors	30mm	25mm dia	III
C30	4-Wire Single Reed Pencil Type	15mm	8mm dia	III
C40	4-Core Single Reed Pencil Type	15mm	8mm dia	III
C50	4-Wire Single Reed Pencil Type With Flange	15mm	8mm dia	III
C80	4-Wire Change-Over Pencil Type	15mm	8mm dia	III
C91	4-Wire Normally Open Reed Pencil Type	15mm	8mm dia	III
PDC30*	6-Core Single Reed Pencil Type With Resistors	15mm	8mm dia	III
Q10	4-Core Single Reed Pencil Type With Surface Mounting Kit 0.3m Cable	15mm	8mm dia/ 54x 8x14mm	III
Q20	4-Core Single Reed Pencil Type With Surface Mounting Kit 1m Cable	15mm	8mm dia/ 54x 8x14mm	III
YA90G2	Large OG Flush Potted G2 with Selectable Resistors and Metal Plate	25mm	25mm dia	III

\* Add resistor type to end of code



Colours - Add B for Brown to end of code.



Product Code	Description	Operating Gap	Dimensions	Enviro class
<b>GRADE 1</b>				
A10	2-Terminal Single Reed	14mm	20mm dia	II
A40	5-Terminal Single Reed	14mm	20mm dia	II
A50	5-Terminal Single Reed Round Plate	14mm	20mm dia	II
A60	5-Terminal Normally Open	14mm	20mm dia	II
A90	6-Terminal Double Reed Metal Plate	30mm	25mm dia	II
A91	6-Terminal Single Reed Metal Plate	30mm	25mm dia	II



A huge variety of options available, manufactured to comply with EN 50131– 2– 6 Grades 1, 2 and 3. An enhanced range of Grade 3 variants with selectable resistors will make stockholding easier for distributors and enable installers to keep one version in the toolbox rather than one per panel. Variations of all contacts to include pre-fitted resistors are also available. If you can't see what you want then ask us.

Product Code	Description	Operating Gap	Dimensions	Enviro class	Shared Zone OK	Multi Resistors
<b>GRADE 3</b>						
YE50*	8-Core Potted Multi Resistors	15mm	67x14x13mm	III	✓	✓
XEND24*	4-Terminal Selectable Resistors and TACT Tamper – Biased, Standard Footprint	12mm	67x14x17mm	II	✓	✓
YEND74*	4-Terminal Industrial Selectable Resistors, TACT Tamper and Magnetic Interference Detection	30mm	78x25x20mm	II	✓	✓
SPA–SS	Small Surface Spacer		67x14x3mm			
SPA–LS	Large Surface Spacer		78x25x3mm			

\*Complete with 2 x free spacers

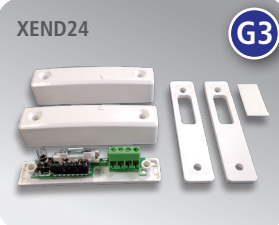
## Features

- All surface contacts can be used in shared zones
- High Quality, reliable reeds
- Material: ABS or Aluminium
- Voltage Range: 1–100V DC 125V AC Max
- Switching Current: 500mA Max DC 500mA Max AC
- Temp Range: – 40°C to +50°C

## Colour Options

- ☐ White
- ☐ Brown (add B to code)
- ☐ Black (add BK to code)
- ☐ Anthracite Grey (Add GY-7016 to code)

Other colours available on request



SPA-SS, SPA-LS

For increased depth or use on recessed doors.



YEND74

Has additional link to provide ease of use in shared zones (double doors).

Please ask if you need:

- Normally-open, change-over
- Double reed options
- Pre-fitted resistors
- Non-standard colours
- **NON-STANDARD CABLE LENGTHS**
- For resistor values see rear of brochure

Product Code	Description	Operating Gap	Dimensions	Enviro class
<b>GRADE 2</b>				
D25**	5-Terminal Single Reed With TACT Tamper	20mm	67x14x13mm	II
D70	6-Terminal Industrial Single Reed With Tamper	40mm	86x25x20mm	II
D702	6-Terminal Industrial Double Reed With Tamper	40mm	86x25x20mm	II
D75	6-Terminal Industrial Terminal Block and TACT Tamper	35mm	78x25x20mm	II
E30	4-Wire Single Reed	20mm	67x14x13mm	III
E50	4-Core Single Reed	20mm	67x14x13mm	III
E60	4-Core Double Reed	20mm	67x14x13mm	III
E70	4-Core Single Reed Mini Surface	15mm	38x9x15mm	III
E70P	4-Core Single Reed Mini Surface With Adhesive pad	15mm	38x9x15mm	III
E80	4-Wire Single Reed Mini Surface	15mm	38x9x15mm	III
E90A	4-Core Aluminium Mini Surface	15mm	40x14x10mm	III

\*\* Comes with free spacers



**Options:** Single Reed, Double Reed, Normally – Open, Normally – Closed and Change – Over Reed

## Surface Contacts | Grade 1 & Grade 2 with integral resistors

Product Code	Description	Operating Gap	Dimensions	Enviro class	Shared Zone OK	Multi Resistors
<b>GRADE 2 with pre-fixed resistors</b>						
D75MULTI**	4-Terminal Industrial Selectable Resistors and TACT Tamper	35mm	78x25x20mm	II	✓	✓
YEND24**	4-Terminal With Selectable Resistors and TACT Tamper, Standard Footprint	20mm	67x14x17mm	II	✓	✓
PDE50*	6-Core Potted With Resistors	20mm	67x14x13mm	III	✓	*
PDE90A*	6-Core Potted Aluminium Mini Surface With Resistors	15mm	40x14x10mm	III	✓	*
<b>GRADE 1</b>						
D10	2-Terminal Single Reed	20mm	67x14x13 mm	II		
D20	5-Terminal Single Reed	20mm	67x14x13 mm	II		
D40	5-Terminal Double Reed	20mm	67x14x13 mm	II		
D50	5-Terminal Change-Over	20mm	67x14x13 mm	II		
D60	5-Terminal Normally Open	20mm	67x14x13 mm	II		

\* Add resistor type to end of code

\*\* Comes with free spacers



Please ask if you need:

- Normally-open, change-over
- Double reed options
- Pre-fitted resistors
- Non-standard colours
- **NON-STANDARD CABLE LENGTHS**

## MAXHUNT / EUROFLEX Surface Contacts



We have enhanced our product offering by the addition of the Maxhunt and Euroflex ranges to our portfolio. This includes some thinner surface contacts and also includes the micro BW001E and 8-terminal BW020 range all produced to the high quality standards you expect from Knight.

<b>MAXHUNT CONTACTS</b>						
Product Code	Description	Operating Gap	Dimensions	Grade	Enviro Class	
BW010	5-Terminal Single Reed	27mm	62x12x13mm	1	II	
BB010	5-Terminal Single Reed (Brown)	27mm	62x12x13mm	1	II	
BW009E	4-Core Single Reed Potted (50cm Fly Lead)	27mm	62x12x13mm	2	III	
BB009E	4-Core Single Reed Potted (50cm Fly Lead, Brown)	27mm	62x12x13mm	2	III	
BW001E	4-Core Single Reed Mini Surface Encapsulated (50cm Fly Lead)	19mm	30x12x13mm	2	III	
BB001E	4-Core Single Reed Mini Surface Encapsulated (50cm Fly Lead, Brown)	19mm	30x12x13mm	2	III	
BW020	8-Terminal Single Reed Industrial With Leaf Tamper	40mm	82x25x20mm	1	II	
BB020	8-Terminal Single Reed Industrial With Leaf Tamper (Brown)	40mm	82x25x20mm	1	II	

<b>EUROFLEX CONTACTS</b>						
Product Code	Description	Operating Gap	Dimensions	Grade	Enviro Class	
CP621B	5-Terminal Double Reed (DPST)	20mm	59x14x14mm	1	II	
CP621D	5-Terminal Double Reed (DPST, 1xNO, 1xNC)	20mm	59x14x14mm	1	II	

### MAXHUNT SURFACE CONTACTS



### EUROFLEX SURFACE CONTACTS





We have added some unique Grade 3 contacts to our Heavy Duty range in the last few years. Our YF10C is universal (not handed) and has selectable resistors incorporated inside the housing which will suit most main control panels. A large rubber spacer is also available for use on metal floors. Our YH10A does the same but in the housing of an angle contact. Both have decent operating gaps. The YM10 is a superb G3 option. It is housed in a large aluminium case with a removable cover and microswitch tamper. The YH10A and YF10C are sealed and potted for excellent water resistance.

Product Code	Description	Operating Gap	Dimensions	Enviro class	Shared Zone OK	Multi Resistors
<b>GRADE 3</b>						
YF10C	Roller Shutter Universal Interchangeable With Selectable Resistors and Magnetic Interference Detection (1m Armoured Sleeve)	35mm	R-150x40x15 M-70*45*30mm	III	✓	✓
YH10A	Aluminium Angle Contact With Selectable Resistors and Magnetic Interference Detection	35mm	80x25x27mm	III	✓	✓
YH10CB	WATERPROOF, Aluminium Angle Contact With Selectable Resistors and Magnetic Interference Detection	35mm	80x25x27mm	III	✓	✓
YM10*	8-Terminal Adjustable Heavy Duty Contact Aluminium. Microswitch Tamper, Removable Cover and Magnetic Interference Detection	20mm	170x23x22mm	II	✓	*
SPA-H10	Rubber Spacer for H10A and YH10A Pack of 10					
SPA-RS	Roller Shutter Spacer – Rubber *Use when fitting to metal surface*		150x40x10mm			

\* Add resistor value to end of code    \*\* Add length required to end of partcode eg. YF10C5M / YH10A3M etc

## Features

- All surface contacts can be used in shared zones
- Unique G3 designs
- High quality, reliable reeds
- Material: ABS or Aluminium
- Voltage Range: 1–100V DC  
125V AC Max
- Switching Current:  
500mA Max DC  
500mA Max AC
- Temp Range: –40°C to +50°C
- **OTHER CABLE LENGTH OPTIONS AVAILABLE**



You Tube



YF10C

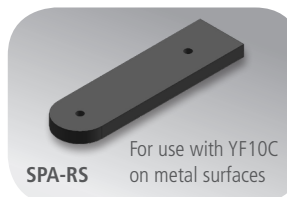


YM10



YH10A

SPA-H10  
Rubber Spacer for  
H10A and YH10A  
Pack of 10



SPA-RS

For use with YF10C  
on metal surfaces

Product Code	Description	Operating Gap	Dimensions	Enviro class
<b>GRADE 2</b>				
E91	4-Core Large Surface Aluminium	35mm	70x14x10mm	III
E92	4-Wire Large Surface Aluminium With Armoured Slewing	35mm	70x14x10mm	III
E91/E92BK	Bracket to Suit E91 or E92	N/A	N/A	III
F10A	Roller Shutter Single Reed (18" Armoured Sleeve)	50mm		III
F10C	Roller Shutter Single Reed (1m Armoured Sleeve)	50mm		III
F10CMULTI	Roller Shutter Single Reed 1m With Selectable Resistors	50mm		III
F102	Roller Shutter Contact Single Reed (2m Armoured Sleeve)	50mm	R-150x40x15 M-70*45*30mm	III
F20	Roller Shutter Double Reed 6 – wire	50mm		III
F30	Roller Shutter Change – Over Reed	50mm		III
F40	Roller Shutter Contact Normally Open Reed	50mm		III
H10A	Aluminium Angle Single Reed (Armoured Sleeve)	50mm	80x25x27mm	III
H10AMULTI	Aluminium Angle Contact (Armoured Sleeve) with Selectable Resistors	50mm	80x25x27mm	III
H10C	Aluminium Angle Contact (4-Core Cable)	50mm	80x25x27mm	III
H10CB	WATERPROOF Aluminium Angle Contact (Armoured Sleeve) with Selectable Resistors	50mm	80x25x27mm	III
H20A	Aluminium Angle Double Reed (Armoured Sleeve)	50mm	80x25x27mm	III
H30A	Aluminium Angle Change–Over Reed (Armoured Sleeve)	50mm	80x25x27mm	III
PDF10C*	Roller Shutter Single Reed With Resistors	50mm	R-150x40x15 M-70*45*30mm	III
PDH10A*	Aluminium Angle Single Reed (Armoured Sleeve) With Resistors	50mm	80x25x27mm	III
M10	8-Terminal Adjustable Heavy Duty Contact Aluminium Microswitch Tamper and Removable Cover	50mm	170x23x22mm	II
SPA-H10	Rubber Spacer for H10A and YH10A Pack of 10			

\* Add resistor type to end of code

**OTHER CABLE LENGTH OPTIONS AVAILABLE**

**Options:** Single Reed, Double Reed, Normally – Open, Normally – Closed and Change – Over Reed



F10A/C/20/30/40/PDF10C



E92 (armoured as  
pictured)/E91 (cable)

M10

Recent additions to the Knight range are the Maxhunt and Euroflex Heavy Duty Contacts. These feature the unique Thermo-Plastic Roller Shutter and Angle Contacts. Super strong and Weatherproof they are a great alternative to aluminium. The aluminium Micro B011 / B012 is a tiny metal surface contact great for where you have minimal space, but need maximum strength. The Euroflex range includes a variety of lead lengths and reed switch options. If you require a small low profile roller shutter door contact then try the EUROFLEX CA701/702 range.

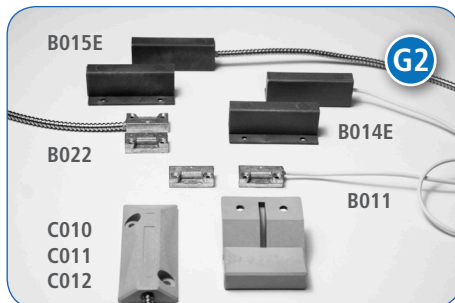
## MAXHUNT HEAVY DUTY CONTACTS

Product Code	Description	Operating Gap	Dimensions	Grade	Enviro Class
B011	4-Core Single Reed Aluminium Patio Potted (50cm cable)	20mm	36x10x16mm	2	III
B022	4-Core Single Reed Aluminium Patio Potted (50cm Armoured cable)	24mm	36x10x16mm	2	III
B014E	4-Core Single Reed ETP Angle Potted (50cm cable)	65mm	75x27x25mm	2	III
B015E	4-Core Single Reed ETP Angle Potted (50cm Armoured cable)	65mm	75x27x25mm	2	III
C010	4-Wire Single Reed ETP Roller Shutter (50cm Armoured cable)	62mm	101x42x14mm	2	III
C011	4-Wire Single Reed ETP Roller Shutter (1m Armoured cable)	62mm	101x42x14mm	2	III
C012	4-Wire Single Reed ETP Roller Shutter (2m Armoured cable)	62mm	101x42x14mm	2	III

## EUROFLEX HEAVY DUTY CONTACTS

Product Code	Description	Operating Gap	Dimensions	Grade	Enviro Class
CA205	4-Core Single Reed Aluminium Patio Potted (1m cable)	15mm	43x17x10mm	2	III
CA503	4-Wire Single Reed Aluminium Heavy Duty (0.5m Armoured cable)	50mm	70x17x10mm	2	III
CA503B	6-Wire Double Reed Aluminium Heavy Duty (DPST, 0.5m Armoured cable)	50mm	70x17x10mm	2	III
CA701	4-Wire Single Reed Aluminium Roller Shutter (50cm Armoured cable)	55mm	135x42x12mm	2	III
CA7011M	4-Wire Single Reed Aluminium Roller Shutter (1m Armoured cable)	55mm	135x42x12mm	2	III
CA7012M	4-Wire Single Reed Aluminium Roller Shutter (2m Armoured cable)	55mm	135x42x12mm	2	III
CA702	4-Core Single Reed Aluminium Roller Shutter (1m cable)	55mm	135x42x12mm	2	III

## MAXHUNT HEAVY DUTY CONTACTS



## EUROFLEX HEAVY DUTY CONTACTS



Scan here for latest SEISMO product info and new releases



## 'SEISMO' Grade 3 Tilt and Shock Sensor

The SEISMO range of vibration sensor can detect both shock and tilt via a MEMS 3-axis sensor. All versions include a plethora of features including auto-calibration, LED status indicators, on-board selectable resistors, rear and lid tamper detection and comfort LED. All features, including pulse count can be locally configured with jumpers. The **SEISMO** is neat, smart, easy to install and complies with Grade 3 of BS EN50131-1

Furthermore the SEISMO ADVANCE is **FUTURE PROOFED**, complying with the new BS EN50131-2-8:2016 Grade 3 and therefore also compliant with the updated PD6662:2017 to Grade 3.

This version includes additional functionality such as an independent fault output, selectable fault resistors, latch terminal and remote LED indication. The detection sensitivity can be selected with a dual range pot.

## Colour Options

- ☐ White
- ☒ Black (add BK to code)
- ☐ Brown (add B to code)

Outer housing for both models



PCB of SEISMO Advance



SEISMOBK / SEISMO-ADVANCEBK



- Material: ABS • Dimensions: 88x25x22mm • Environmental Class: II

Features	SEISMO * <b>G3</b>	SEISMO Advance <b>G3</b>
Sensitivity Auto calibration	✓	✓
Sensitivity pot	✓	✓
Selectable EOL and Alarm resistors	✓	✓
Rear tamper detection	✓	✓
LED enable jumper	✓	✓
Pulse count selectable on board or via serial link	✓	✓
Vibration and motion detection selectable on board or via serial link	✓	✓
Fault output	✓	✓
Selectable Fault resistors	✓	✓
Latch terminal	✓	✓
Remote LED enable	✓	✓
Comfort LED	✓	✓
Serial connection option	✓	✓

\* Becomes G2 from 01/06/19

Knight Fire and Security offers a full range of Junction Boxes, many are to Grade 3 standard with TACT or micro-switch tampers. We can also supply them as empty enclosures if you want to use them for another application. They are available in white or brown except for the G3 conduit JB (J60) which is grey. The J60, J310 and J320 are ideal for fitting on roller shutter or angle contacts and connect neatly with conduit, grommets or trunking.

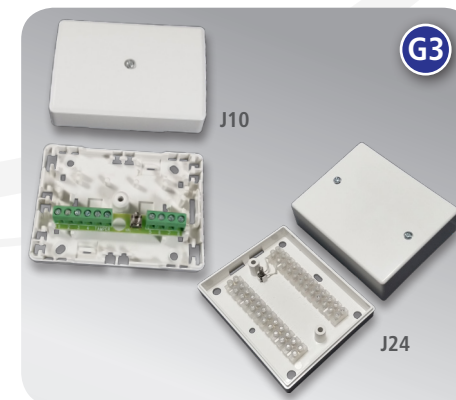
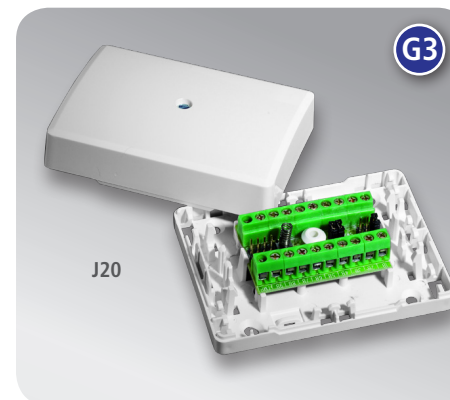
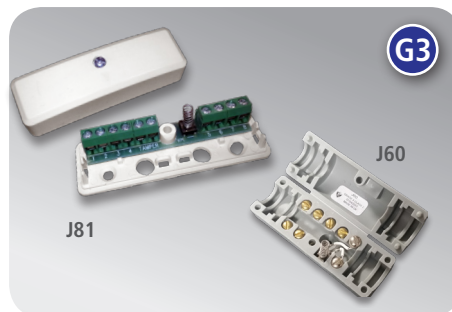
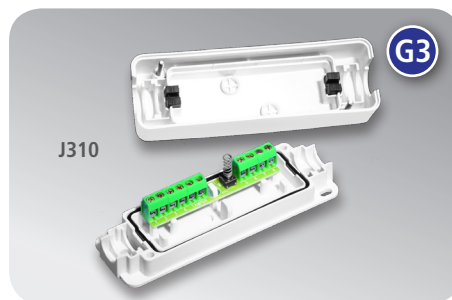
Product Code	Description	Connections	Dimensions	Enviro Class	Tamper
<b>GRADE 3</b>					
J24	24-Way Junction Box With TACT Tamper	24	125x100x48mm	II	TACT
J81	10-Way Junction Box With TACT Tamper	10	78x24x20mm	II	TACT
J10	10-Way Rectangular JB TACT Tamper	10	90x65x26mm	II	TACT
J20	20-Way Junction Box With TACT Tamper	20	90x65x26mm	II	TACT
J60	Conduit JB 1/2" Grey With TACT Tamper	8	70x22x23mm	II	TACT
J310	Weatherproof conduit JB 10-way (PCB)	10	115x37x26mm	III	TACT
J320	Weatherproof conduit JB 20-way (PCB)	20	115x37x26mm	III	TACT

## Features

- Material: ABS
- EN 50131 Graded
- Excellent cable management and knock-out positions
- Extensive Range
- Empty enclosures available

## Colour Options

- ☐ White
- ☒ Brown (add B to code)



Product Code	Description	Connections	Dimensions	Enviro Class	Tamper
<b>GRADE 2 KNIGHT, add B to end of part code for brown</b>					
J40	6-Way Junction Box	7	78x24x22mm	II	LEAF
J80	8-Way Junction Box	10	70x56x20mm	II	LEAF
<b>GRADE 2 MAXHUNT, change W to B in part code for brown</b>					
EW009	9-Way Oblong Junction Box	9	82x25.5x20mm	II	LEAF
EB009	9-Way Oblong Junction Box (Brown)	9	82x25.5x20mm	II	LEAF
EW011	12-Way Square Junction Box	12	69x54x21.5mm	II	LEAF
EB011	12-Way Square Junction Box (Brown)	12	69x54x21.5mm	II	LEAF







Product Code	Description	Alarm Activation	Tamper	Latch/Non-latch	Dimensions	Multi Resistors
<b>GRADE 3 CONFIRMABLE</b>						
PA4W	G3 Electronic Confirmable Pa, 4 Button With Led And Selectable Resistors Plastic	MICROSWITCH	TACT	SELECT-ABLE	84 x 65 x 26 mm	✓
PA4S	G3 Electronic Confirmable Pa, 4 Button With Led And Selectable Resistors S/Steel	MICROSWITCH	TACT	SELECT-ABLE	84 x 65 x 26 mm	✓



## PA4 Special Features

- Independent front and side push buttons. Two separate actions to confirm alarm
- Selectable Resistors
- LEDs to indicate status
- Compliant to BS8243: 2010 and EN50131-1
- Lid and back tamper
- Selectable confirmation mode
- Metal Key reset
- Integral timer
- Simple to install, commission and use
- Selectable latching / non-latching
- Uses 12V supply

PA2 and PA4 make up our new range of panic buttons. PA2 offers traditional double end push operation as well as a double side push variant for reduced accidental activations. Both PA2 and PA4 come in all white, or black with a stainless steel fascia. Restored and non-restored models are available. PA4 offers a robust (and retrospective) solution to loss of HUD Police Response events. All units are reset with a metal key supplied with every PA.

Product Code	Description	Alarm Activation	Tamper	Latch/Non-latch	Dimensions	Multi Resistors
<b>GRADE 3 DOUBLE PUSH</b>						
<b>PA2 RANGE</b>						
PA2SW	G3 Double Push Panic Button, Side Push, White, Plastic	MICROSWITCH	TACT	LATCH	84 x 65 x 26 mm	✗
PA2SS	G3 Double Push Panic Button, Side Push with Stainless Steel Cover	MICROSWITCH	TACT	LATCH	84 x 65 x 26 mm	✗
PA2EW	G3 Double Push Panic Button, End Push, White, Plastic	MICROSWITCH	TACT	LATCH	84 x 65 x 26 mm	✗
PA2ES	G3 Double Push Panic Button, End Push with Stainless Steel Cover	MICROSWITCH	TACT	LATCH	84 x 65 x 26 mm	✗
<b>PA2 RANGE WITH SELECTABLE RESISTORS</b>						
PA2SWR	G3 Double Push Panic Button, Side Push, White, Plastic, Sel Resistor	MICROSWITCH	TACT	LATCH	84 x 65 x 26 mm	✓
PA2SSR	G3 Double Push Panic Button, Side Push, With S/Steel Cover, Sel Resistor	MICROSWITCH	TACT	LATCH	84 x 65 x 26 mm	✓
PA2EWR	G3 Double Push Panic Button, End Push, White, Plastic, Sel Resistor	MICROSWITCH	TACT	LATCH	84 x 65 x 26 mm	✓
PA2ESR	G3 Double Push Panic Button, End Push, With S/Steel Cover, Sel Resistor	MICROSWITCH	TACT	LATCH	84 x 65 x 26 mm	✓

## Features

- Silent Operation to BS4737 Part 2
- Visual 'flag' indication of activation
- Easy conversion from Normally Open to Normally Closed on most models.
- Flexible fitting positions and knock-outs
- Material: ABS/Acetal

- Fully compliant to EN50131-1

- Finish:  
Plastic  
Stainless Steel

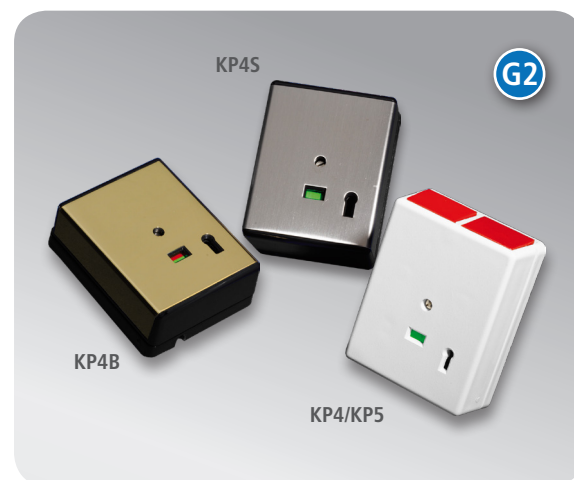
- Metal Key Reset

## Colour Options

- ☐ White
- ☒ Black

A huge selection of Grade 1 and Grade 2 Panic Buttons are available here. Massive choice of shape, finish, latching / non-latching and activation mechanism. All end push variations use metal keys.

Product Code	Description	Alarm activation	Tamper	Latching/ non-latching	Dimensions
<b>GRADE 2 DOUBLE PUSH</b>					
KP4	Panic Button Double Push	REED	LEAF	LATCHING	91x63x29mm
KP4B	Panic Button Double Push Brass	REED	LEAF	LATCHING	91x63x29mm
KP4S	Panic Button Double Push S/Steel	REED	LEAF	LATCHING	91x63x29mm
KP5	Panic Button Double Push N/L	REED	LEAF	NON-LATCHING	91x63x29mm



Product Code	Description	Alarm activation	Tamper	Latching/ non-latching	Dimensions
<b>GRADE 1 SINGLE PUSH</b>					
KP1	Panic Button Single Push Plastic	REED	LEAF	LATCHING	91x63x29mm
KP1B	Panic Button Single Push Brass	REED	LEAF	LATCHING	91x63x29mm
KP1S	Panic Button Single Push S/Steel	REED	LEAF	LATCHING	91x63x29mm
KP2	Panic Button Single Push Plastic N/L	REED	LEAF	NON-LATCHING	91x63x29mm
KP2B	Panic Button Single Push Brass N/L	REED	LEAF	NON-LATCHING	91x63x29mm
KP2S	Panic Button Single Push S/Steel N/L	REED	LEAF	NON-LATCHING	91x63x29mm
KP3	Panic Button Single Push Microswitch Activated	MICRO-SWITCH	LEAF	LATCHING	91x63x29mm
KP7	Panic Button Centre Push Latching	REED	LEAF	LATCHING	57x57x19mm
KP8	Panic Button Centre Push Non-Latching	REED	LEAF	NON-LATCHING	57x57x19mm
KP9	Mini Panic Button Latch/Non-Latch	REED	LEAF	BOTH (INTER-CHANGEABLE)	67x52x26mm
KP9NT	Mini Panic Button Latch/Non-Latch No Tamper	REED	NONE	BOTH (INTER-CHANGEABLE)	67x52x26mm
<b>GRADE 1 SINGLE PUSH MAXHUNT</b>					
G016	Single End Push Panic Button With Metal Key	REED	LEAF	LATCHING	66x50x25mm
G017	Single End Push Panic Button	REED	LEAF	NON-LATCHING	66x50x25mm
G018	Single End Push Panic Button (S/Steel Fascia)	REED	LEAF	NON-LATCHING	66x50x25mm

### Man Down and Personal Attack Wireless Transmitter



#### FEATURES

- Automatic Personal Man Down and PA transmitter
- Double Push PA feature
- Audible & Vibrating Indication of Pre-alarm condition
- 60° operation from vertical
- User selectable Alarm detect time, Pre Alarm indication time and audible mode
- LED indication of wireless transmissions
- User replaceable long life Lithium battery
- Wireless transmission of low battery condition
- Separate Alarm and Restore transmissions
- Fully supervised wireless system
- Each unit transmits a uniquely identifiable code
- Internal antenna
- Reliable, long range wireless transmissions

The popular Maxhunt Range of Call Points is available in a whole host of colours and options – these are listed in the table below. You can also buy spares and hinged covers if required. As we manufacture in house we can produce with different branding, labelling or resistors if required.

STANDARD CALL POINTS- SURFACE MOUNT					
Code (Green version)	POLES	LED & 470 OHM RESISTOR	LIKE GLASS (LG)/ RESET PLATE (RP)	WIRED FOR MAGLOCK	OPTION
MX54SG	1	N	LG	N	#
MX56SG	1	Y	RP	N	
MX51SG	1	Y	RP	Y	
MX74SG	2	N	LG	N	#
MX75SG	2	Y	RP	N	
MX76SG	2	Y	RP	Y	
MX84SG	3	N	LG	N	#
MX85SG	3	Y	RP	N	
MX86SG	3	Y	RP	Y	

WEATHERPROOF CALL POINTS- SURFACE MOUNT					
Code (Green version)	POLES	LED & 470 OHM RESISTOR	LIKE GLASS (LG)/ RESET PLATE (RP)	WIRED FOR MAGLOCK	OPTION
MX57SWG	1	N	LG	N	#
MX58SWG	1	Y	RP	N	
MX59SWG	1	Y	RP	Y	
MX77DWG	2	N	LG	N	#
MX78DWG	2	Y	RP	N	
MX79DWG	2	Y	RP	Y	
MX87TWG	3	N	LG	N	#
MX88TWG	3	Y	RP	N	
MX89TWG	3	Y	RP	Y	

- REPLACE G IN CODE FOR COLOUR WITH
- W=WHITE, B=BLUE, Y=YELLOW R=RED
- # ADD 'S' ON THE END OF CODE TO SWAP 'LIKE GLASS' FOR RESET PLATE'
- NOTE ALL RED CALL POINTS HAVE 470 OHM RESISTOR AS STANDARD
- OTHER RESISTOR OPTIONS AVAILABLE ON REQUEST

Features
Installer friendly
Robust and reliable
Huge range of options / colours
Easy to test
Technical support direct from the manufacturer
Size: 87 x87 x53mm
Material : ABS Housing, PC Cover
Electrical rating : 5A/10A 250VAC
Ingress rating: Weatherproof IP67, Standard IP24



## Call Point Spares and Ancillaries

Product Code	Description
MX001	Spare Keys (pack of 10 spare keys)
MX002	Spare Glass (pack of 10 spare glass)
MX003	Cover (transparent hinged cover)
MX004	Resettable Element (pack of 10 - Spare resettable element)
MX004E	Resettable Element W/P (pack of 10 - spare resettable element for W/P units)
MX005	"Like Glass" (pack of 10 - Spare "Like Glass" element)



## OMNI - Part Code: OM-1

The OMNI is a double gang plastic back box which can house an MX callpoint, alongside another 'Press To Exit' single gang device in either a vertical, or horizontal configuration. This can be determined on site.

- Material : ABS
- Dimensions: Platform 88x88x21mm / Base 190x88x26mm
- Colour: Green (others available on request)





## Door Loops

We have a variety of door loops in white or brown that can be supplied with or without junction boxes.

Product Code – with JBs	Description	Product Code – without JBs	Description
L40*	6 Way Coiled Door Loop 10" (250mm) Extends to 1750mm	L20A	6 Way Straight Door Loop 12" (305mm)
L60*	6 Way Coiled Door Loop 20" (500mm) Extends to 3500mm	L40A	6 Way Coiled Door Loop 10" (250mm) Extends to 1750mm
L90	Armoured Door Loop with 2 x 8 Way Conduit Junction Boxes	L60A	6 Way Coiled Door Loop 20" (500mm) Extends to 3500mm
L310	Armoured Door Loop with 2x10 Way Class 3 Junction Boxes	*L40 and L60 come with 2 x J40 6-way Junction Boxes	



## Fuse and Resistor Kits

Handy Fuse Kits and Resistor Kits which contain the most common fuses and resistors required by engineers for fire / security / access control projects.

Code: FUSEKIT	Specifications
90x IEC glass fuses, 5 each of the below ratings: <b>20mm:</b> T1A—T2A—T3.15A—T5A—F500mA—F1A—F1.6A—F2A—F2.5A—F3.15A—F4A—F5A—F6.3A—F10A <b>32mm:</b> F1A—F2A—F5A—F10A	
Code: RESKIT	Specifications
270x metal film (0.25W 1%) resistors, 30 each of the ratings listed below: 470 Ω, 680 Ω, 1K Ω, 2K2 Ω, 3K9 Ω, 4K7 Ω 6K8 Ω, 10K Ω, 20K Ω	



## Pass Key Switches

All pass keys have micro-switch operation and comply with Grade 3. Polycarbonate or aluminium options available. We also supply 'suited', 'keys-alike' versions. Max voltage 250V AC switching current 2 Amp.

Product Code	Description	Dimensions	Grade
P01	Pass Key Switch – 2amp Diecast Aluminium Tampered Double Pole	90x38x30mm	3
P01W	Pass Key Switch – 2amp Diecast Aluminium Tampered Double Pole in White	90x38x30mm	3
P02	Pass Key Switch – 2amp Diecast Aluminium Tampered Suited Keys (Keys Alike) Double Pole	90x38x30mm	3
P03	Pass Key Switch – Polycarbonate Single Pole	90x38x30mm	3
P04	Pass Key Switch – Polycarbonate Single Pole Suited Keys (Keys Alike)	90x38x30mm	3
P05	Pass Key Switch – Polycarbonate Tampered Suited Keys (Keys Alike) with 2 LEDs	90x38x30mm	3



## Final Exit Set Switches

New to the Knight range are metal, Grade 3 final exit set switches. These incorporate integral buzzers, vandal-proof cases, selectable resistors and tamper switch protection. We've also improved the Z20 range which can now have the lid screwed into the wall for extra protection and our plastic flush variant has an LED to comply with Grade 3 EN 50131.



Product Code	Description	Dimensions	Grade
Z20	Final Exit Switch Surface White with Integral Buzzer	54x35x21mm	1
Z20B	Final Exit Switch Surface Black with Integral Buzzer	54x35x21mm	1
Z30	Flush Stainless Steel Exit Switch with Integral Buzzer and Selectable Resistors	Fascia 50x30mm, Body 30x16mm	3
Z40	Surface Aluminium Exit Switch with Integral Buzzer and Selectable Resistors	90x38x30mm	3

# UK Security Control Panels – EOL Resistor Values

These are the options available on our selectable Resistor Contacts and Panic Buttons. Please check exact up to date spec on the technical data section on our web-site [www.knightfireandsecurity.com](http://www.knightfireandsecurity.com)

Panel	EOL resistor	Alarm bypass resistor
Honeywell (Ademco, Microtech), Galaxy, Europlex Verifier	1K	1K
Castle, Abel Premier, Cooper (Scantronic, Menvier), Pyronix PCX, Texecom Premier, Abel Premier, Orisec	2K2	4K7
Risco (Gardtec)	4K7	6K8
Guardall	8K2	8K2
Europlex 3GS, MDT, Risco Lightsys / Prosys	2K2	2K2
DSC	5K6	5K6
Pyronix Matrix, GE/Aritech, Siemens, HKC	4K7	4K7
Inner Range	2K2	6K8
*Pacom	10K	10K

DSC Option not on standard YA40, YA90, YF10C, YH10A

\*Only available for A41MULTI / XA41MULTI / A51MULTI / XA51MULTI. Other options available as specials.

## How to contact Knight Fire and Security



### Call

Tel: **+44 (0) 29 2048 8129**  
Fax: **+44 (0) 29 2048 9132**



### Visit us online

Visit our website to see detailed information about our products and to download technical drawings.  
[www.knightfireandsecurity.com](http://www.knightfireandsecurity.com)



### Sales

If you would like to receive a quote or would like to discuss a project with us then please e-mail:  
[sales@knightfireandsecurity.com](mailto:sales@knightfireandsecurity.com)



**KNIGHT**  
FIRE & SECURITY  
alarm system components

**ACS**  
REGISTRARS  
Quality Assurance  
**ISO 9001**

**Knight Fire and Security Products Ltd**

Unit 84, Seawall Road Industrial Estate, Cardiff CF24 5TH