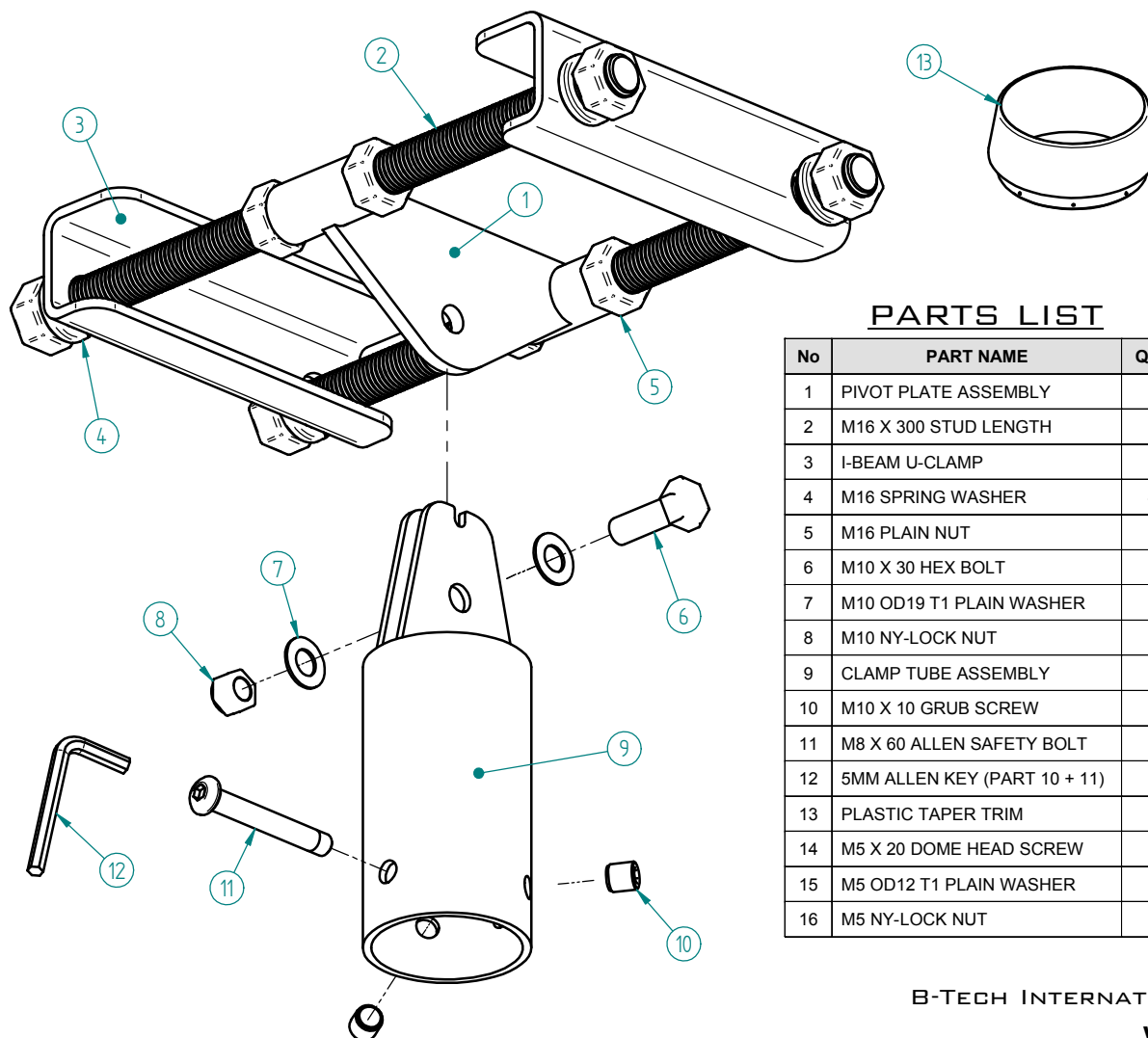


BETTER BY DESIGN

# BT7017 50MM POLE I-BEAM MOUNT

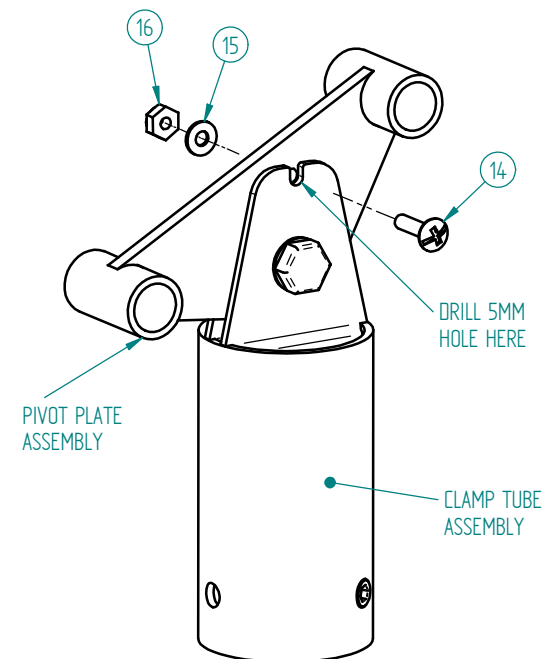
PLEASE KEEP THIS PARTS LIST FOR FUTURE REFERENCE



## PARTS LIST

No	PART NAME	QTY
1	PIVOT PLATE ASSEMBLY	1
2	M16 X 300 STUD LENGTH	2
3	I-BEAM U-CLAMP	2
4	M16 SPRING WASHER	4
5	M16 PLAIN NUT	8
6	M10 X 30 HEX BOLT	1
7	M10 OD19 T1 PLAIN WASHER	2
8	M10 NY-LOCK NUT	1
9	CLAMP TUBE ASSEMBLY	1
10	M10 X 10 GRUB SCREW	2
11	M8 X 60 ALLEN SAFETY BOLT	1
12	5MM ALLEN KEY (PART 10 + 11)	1
13	PLASTIC TAPER TRIM	1
14	M5 X 20 DOME HEAD SCREW	1
15	M5 OD12 T1 PLAIN WASHER	1
16	M5 NY-LOCK NUT	1

## SETTING THE POLE VERTICAL



WHEN MOUNTING HEAVY EQUIPMENT AN OPTIONAL LOCKING BOLT (PART 14) MAY BE USED TO SET THE POLE VERTICAL AT ANY INCLINATION.

- ONCE SECURED TO THE I-BEAM, ALLOW THE CLAMP TUBE ASSEMBLY TO NATURALLY HANG PLUMB.

- DRILL A 5MM HOLE THROUGH THE PIVOT PLATE ASSEMBLY USING THE SLOT IN THE CLAMP TUBE ASSEMBLY AS A GUIDE.

- PASS THE SCREW THROUGH BOTH ASSEMBLIES AND ADD THE WASHER AND NUT AS ILLUSTRATED.

- ENSURE SAFETY BOLT (PART 11) IS IN PLACE BEFORE ANY AV EQUIPMENT IS FITTED.

COPYRIGHT 2006

B-TECH INTERNATIONAL LIMITED, CROYDON, CRO 9UG, UK

[www.b-tech-int.com](http://www.b-tech-int.com)