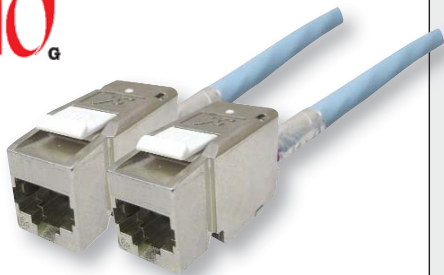




NET<sup>™</sup>  
10<sup>G</sup>



Features & Benefits

- ✗ Cat 6A performance
- ✗ Suitable for 10-Gigabit Ethernet
- ✗ Fully shielded die-cast design
- ✗ No special tooling required
- ✗ Industry standard Keystone fitting
- ✗ Tool-less snap-to-fit module

CCS Cat6A modules have been designed to provide the exceptional performance required to support extremely high speed applications, including 10-Gigabit Ethernet.

When used with Net10G cable, they provide an outstanding transmission medium free from the problems of alien crosstalk.

The tool-less and snap-to-fit Keystone module ensures a quick and easy to terminate installation. And the standard Keystone fitting allows the use of the same module in patch panels, wall outlets and a variety of other applications.

Specification

Conforms to	EIA/TIA 568-B2-10 Category 6A IEEE802.3an Gigabit-Ethernet
Mounting hole size	19.3 x 14.7 mm
Recommended back-box depth	40 mm
Width	18.0 mm
Depth	44.2 mm
Height	22.8 mm
Copper conductor diameter	
Solid:	0.40-0.65 mm / AWG26/1-22/1
Stranded:	0.46-0.61 mm / AWG27/7-24/7
Life (operations)	min. 750
Shielding housing	zinc die-cast
Colour code	T568B

Ordering Information

Product Description	Part Number
CCS Cat 6A FTP tool-less keystone	008-010-010-10
CCS 45 x 45 Dual Angled Keystone clip (2 x RJ45 slot)	008-001-001-75
For Shielded Keystone Patch Panels please see page 7	



## Features & Benefits

- ✖ Fully shielded
- ✖ 24 & 48 way capacity versions
- ✖ Suitable 10G FTP tool-less keystone modules
- ✖ Suitable for CCS Express assemblies
- ✖ Integral cable management bar
- ✖ Earth connection
- ✖ Robust all steel construction



## Ordering Information

Product Description	Part Number
CCS Unloaded 24 Way Shielded Keystone Panel	009-010-010-00
CCS Unloaded 48 Way Shielded Keystone Panel	009-010-010-12
CCS Keystone Panel Blanks (Black)	009-010-009-10

## Specification

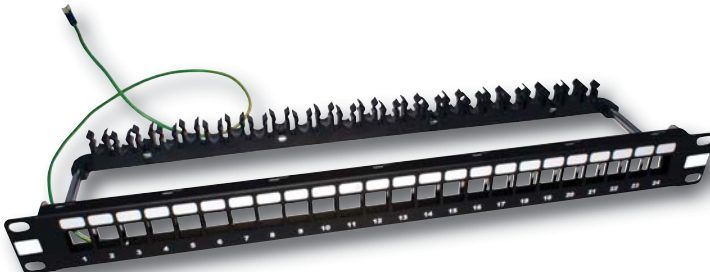
Width	483 mm (19")
Depth	155 mm
Height	44.45 mm
Material	Mild Steel
Finish	
24 way:	Fine Textured Black Paint (Front) Bright Zinc Plate (Rear)
48 way:	Bright Zinc Plate (Front & Rear)

The 24 and 48 way keystone patch panel offers ultra high density and the capability for 10G data transmission performance levels.

Supplied as unloaded, the fully shielded patch panel accepts 10G high performance keystone modules which are simply clicked into position.

Patch panel installation and termination time can be greatly reduced when CCS tool-less keystone modules are used in the panel making for a snap-to-fit, quick and easy termination.

To further increase on-site installation efficiency, CCS Express pre-terminated and pre-tested modules can also be used.



CCS Unloaded 24 Way  
Shielded Keystone Panel

**NET  
10<sup>G</sup>**


CCS Category 6A U/FTP cable has been designed to provide the exceptional performance required to support extremely high speed applications, including 10-Gigabit Ethernet.

The individually shielded pairs ensure maximum transmission, free from the problems of NEXT and Alien Crosstalk. The sheath is a Low Smoke Zero Halogen material, as specified in many public buildings.

### Specification

<b>Application:</b>	IEEE 802.3: 10Base-T; 100Base-T; 1000Base-T; 10GBase-T Standards: EIA/TIA 568B: ISO/IEC 11801 2nd ed.; draft IEC 61156-5 2nd ed.; EN 50173-1; draft EN 50288-10; RoHS2002/95/EC
<b>Fire rating:</b>	IEC 60332-1; IEC 60754-1; IEC 60754-2; IEC 61034
<b>Conductor:</b>	bare copper wire (AWG 23)
<b>Insulation:</b>	Polyethylene, Ø 1.45 mm
<b>Drain wire:</b>	Tinned copper
<b>Individual shield around each pair:</b>	Alu/Polyester tape
<b>Sheath:</b>	LSZH Ivory
<b>Bending radius:</b>	≥ 35 mm without load; ≥ 70 mm with load
<b>Temperature range:</b>	during operation -20°C upto + 60°C during installation 0°C upto + 50°C
<b>Outer diameter:</b>	8.0 mm
<b>Fire Load:</b>	674 MJ/km; 0.187 kWh/m
<b>Weight:</b>	57 kg/km
<b>Drum weight (Loaded 500m):</b>	32kg
<b>Max pulling tension:</b>	78N

### Specification

<b>DC loop resistance:</b>	146.4 Ω /km
<b>Resistance unbalance:</b>	≤ 2%
<b>Insulation resistance (500 V)</b>	≥ 5000 MΩ km
<b>Capacitance unbalance (pair to ground)</b>	≤ 1600 pF/km
<b>Characteristic impedance: @100 MHz</b>	100 ± 5 Ω
<b>Nominal velocity of propagation:</b>	approx. 78%
<b>Transfer Impedance (mΩ/m)</b>	1MHz 10MHz 30MHz 100MHz ≤ 50 ≤ 50 ≤ 70 ≤ 100

### Ordering Information

Product Description	Part Number
CCS Category 6A U/FTP Solid Cable	001-003-003-06

### Transmission characteristics (Nominal according to Category 6A Draft IEC 61156-5 Ed.2 @ 20°C)

f (MHz)	Attenuation (dB/100m)		NEXT (dB)		PS NEXT (dB)		ELFEXT (dB/100m)		PS ELFEXT (dB/100m)		Return Loss (dB)		PS ANEXT (dB)	
	Nominal	Typical	Nominal	Typical	Nominal	Typical	Nominal	Typical	Nominal	Typical	Nominal	Typical	Nominal	Typical
4	3.8	3.6	65.3	90	63.3	87	58	80	55	77	23	25	76.5	85
10	5.9	5.6	59.3	90	57.3	87	50	80	47	77	25	26	72.5	85
20	8.4	8.0	54.8	82	52.8	79	44	77	41	74	25	26	69.5	85
62.5	15	14.2	47.4	75	45.4	72	34.1	71	31.1	68	21.5	23	64.5	85
100	19.1	18.1	44.3	72	42.3	69	30	67	27	64	20.1	22	62.5	80
250	31.1	28.9	38.3	65	36.3	62	22	52	19	49	17.3	19	56.5	73
500	45.3	41.2	33.8	60	31.8	57	16	46	13	43	17.3	18	52	68
550	-	43.5	-	59	-	56	-	45	-	42	-	16	-	67



NET  
10<sup>G</sup>



#### Features & Benefits

- ✘ Independently tested to 10GBASE-T standards as part of a Net 10G channel
- ✘ Conform to EIA/TIA 568-B2-10 Category 6A
- ✘ Uses fully shielded cable
- ✘ Available in lengths from 1 to 5 metres

#### Ordering Information

Net 10G SFTP RJ45 Patch Cord				
Colour	Length (metre)	Part Number	Length (metre)	Part Number
Grey	1.0	003-010-010-01	2.0	003-010-020-01
Blue	1.0	003-010-010-03	2.0	003-010-020-03
Green	1.0	003-010-010-04	2.0	003-010-020-04
Red	1.0	003-010-010-05	2.0	003-010-020-05
Yellow	1.0	003-010-010-06	2.0	003-010-020-06
Grey	3.0	003-010-030-01	4.0	003-010-040-01
Blue	3.0	003-010-030-03	4.0	003-010-040-03
Green	3.0	003-010-030-04	4.0	003-010-040-04
Red	3.0	003-010-030-05	4.0	003-010-040-05
Yellow	3.0	003-010-030-06	4.0	003-010-040-06
Grey	5.0	003-010-050-01		
Blue	5.0	003-010-050-03		
Green	5.0	003-010-050-04		
Red	5.0	003-010-050-05		
Yellow	5.0	003-010-050-06		

CCS Net 10G SFTP patch leads are designed to complete the Net 10G channel, providing support for extremely high-speed applications including 10GBASE-T.

Net 10G SFTP patch leads are made from shielded Cat6 cable and are terminated using high performance modular plugs. The fully shielded cable increases signal isolation and helps to prevent contaminant noise from entering the lead. Net 10G SFTP patch leads are complementary to the CCS fully shielded Net 10G cabling system which can provide support for future bandwidth-hungry applications.

We stock a variety of leads in lengths from 1 to 5 metre, which are available in a number of different colours.

#### Specification

Plug	High Performance Modular Plug
Cable	Category 6 Shielded Cable
Conforms to	EIA/TIA 568-B2-10 Category 6A

## Features & Benefits

- ✕ Quick and easy to install
- ✕ Snap-fit to terminate
- ✕ Suitable for all standard Keystone applications
- ✕ Category 6 hardware performance
- ✕ T568B colour coded wiring terminals



## Ordering Information

Product Description	Part Number
CCS Cat 6 UTP tool-less keystone	008-010-010-60
CCS 45 x 45 Dual Angled Keystone Clip (2 x RJ45 slot)	008-001-001-75
CCS 45 x 45 Dual Keystone Clip (1 x RJ45 slot)	008-001-001-67
CCS 45 x 22.5 Single Keystone Clip (1 x RJ45 slot)	008-001-001-68
For Unshielded Keystone Patch Panels see page 12	

## Specification

Width	16.8mm
Depth	35.0mm
Height	21.5mm
Mounting Hole Size	19.3mm x 14.7mm
Material	Polycarbonate/ABS thermoplastic resin with grade UL94 VO at 1.5mm flame retardancy
IDC Labels	Colour coded to T568B
IDC Blocks	Tool less IDC mechanism
Conforms to	TIA/EIA-568-B.2-1 Category 6 Specification

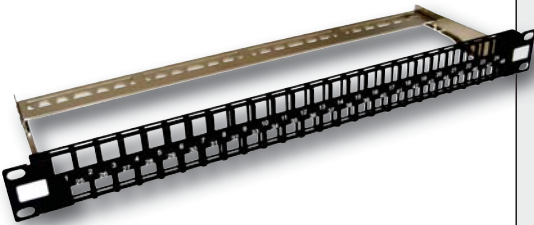
CCS tool-less keystone module ensures a quick and easy to terminate installation. The snap-fit to terminate design means that a punch down tool is not required. The module has also been designed to fit all standard keystone applications.

The CCS tool-less keystone module offers high performance transmission that meets or exceeds Category 6 standards.

They have been designed to be installed into most UK and European keystone applications, including standard or angled faceplate products, patch panels or surface boxes.

The module wiring terminals are also colour coded to T568B standards to ensure a quick and easy installation.





Features & Benefits

- ✂ 24 and 48 high density
- ✂ Category 6 performance
- ✂ Suitable for CCS Express assemblies
- ✂ Suitable for tool-less keystone modules
- ✂ Integral cable management bar

The 24 and 48 way keystone patch panel offers ultra high density and the capability for Category 6 data transmission performance levels.

The patch panel is supplied unloaded and accepts Category 6 performance keystone modules which are simply clicked into position.

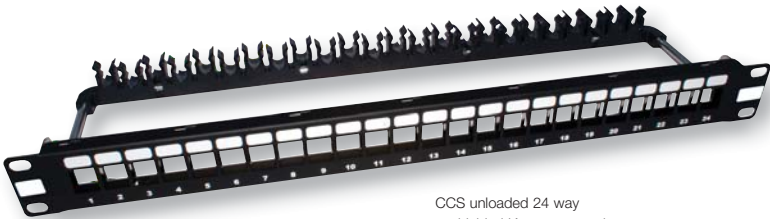
Patch panel installation and termination time can be greatly reduced when CCS tool-less keystone modules are used in the panel, making for a snap-to-fit, quick and easy termination. To further increase on-site installation efficiency, CCS Express pre-terminated and pre-tested modules can also be used.

Ordering Information

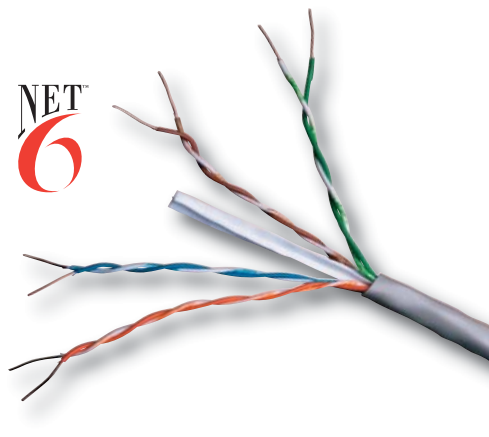
Product Description	Part Number
CCS Unloaded 24 Way Unshielded Keystone Panel	009-010-010-05
CCS Unloaded 48 Way Unshielded Keystone Panel	009-010-010-10
CCS Keystone Panel Blanks (Black)	009-010-009-10

Specification

Width	483 mm (19")
Depth	155 mm
Height	44.45 mm
Material	Mild Steel
Finish	Black Paint - Fine Textured



CCS unloaded 24 way unshielded Keystone panel



Features & Benefits

- ✕ Category 6 Performance
- ✕ External grade cable available
- ✕ UL Tested
- ✕ Every box individually tested in the UK
- ✕ Supplied metre marked for easy installation
- ✕ Performance exceeding Category 6 specifications

Category 6 unshielded twisted pair cable is designed for use in next generation data communications networks, and will comfortably support all present applications including Gigabit Ethernet.

Category 6 UTP solid cable offers the performance characteristics required by the emerging Category 6 standard. When used in conjunction with Category 6 modules and patch panels the user will get a link performance exceeding Category 6 requirements.

Ordering Information

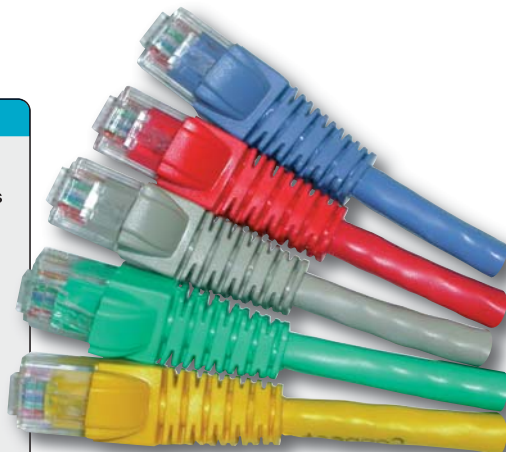
Product Description	Part Number
Category 6 UTP Solid Cable (Grey)	001-003-005-00
Category 6 UTP External Solid Cable (Black)	001-003-005-10
Category 6 UTP LSZH Solid Cable (Violet)	001-003-005-60

Specification

Inner Conductor	0.575mm plain copper
Insulation	HD Polyethylene
Construction	4 twisted pairs cabled together with spline
Colour Code	Pair 1: White/Blue-Blue/White Pair 2: White/Orange-Orange/White Pair 3: White/Green-Green/White Pair 4: White/Brown-Brown/White
Jacket	PVC, PE (external) or Low Smoke Zero Halogen
Overall Diameter	6.4mm
Weight (Kg/Km)	39.1 (PVC/PE)/41.2 (LSZH)
Min Bending Radius Installation	50mm
Min Bending Radius Installed	25mm
Impedance	100 Ohm +/- 15 Ohm
Capacitance	50 pF/m
Conductor Loop Resistance	30 Ohm/100m
Velocity Ratio	66%
Operating Temp	20°C - 60°C
Installation Temp	0°C - 50°C
Conforms To	TIA/EIA-568-B.2-1 Category 6 Specification

## Features & Benefits

- ✘ Individually tested up to 250MHz
- ✘ Available in lengths from 0.5 to 5 metres
- ✘ All CCS Cat 6 leads fully conform to TIA/EIA-568-B.2-1
- ✘ Individual test reports available at a nominal fee



## Ordering Information

### Cat 6 UTP Patch Lead

Colour	Length (metre)	Part Number	Length (metre)	Part Number
Grey	0.5	003-3B5-005-01	1.0	003-3B5-010-01
White	0.5	003-3B5-005-02	1.0	003-3B5-010-02
Blue	0.5	003-3B5-005-03	1.0	003-3B5-010-03
Green	0.5	003-3B5-005-04	1.0	003-3B5-010-04
Red	0.5	003-3B5-005-05	1.0	003-3B5-010-05
Yellow	0.5	003-3B5-005-06	1.0	003-3B5-010-06
Orange	0.5	003-3B5-005-07	1.0	003-3B5-010-07
Purple	0.5	003-3B5-005-08	1.0	003-3B5-010-08
Black	0.5	003-3B5-005-09	1.0	003-3B5-010-09
Grey	2.0	003-3B5-020-01	3.0	003-3B5-030-01
White	2.0	003-3B5-020-02	3.0	003-3B5-030-02
Blue	2.0	003-3B5-020-03	3.0	003-3B5-030-03
Green	2.0	003-3B5-020-04	3.0	003-3B5-030-04
Red	2.0	003-3B5-020-05	3.0	003-3B5-030-05
Yellow	2.0	003-3B5-020-06	3.0	003-3B5-030-06
Orange	2.0	003-3B5-020-07	3.0	003-3B5-030-07
Purple	2.0	003-3B5-020-08	3.0	003-3B5-030-08
Black	2.0	003-3B5-020-09	3.0	003-3B5-030-09
Grey	4.0	003-3B5-040-01	5.0	003-3B5-050-01
White	4.0	003-3B5-040-02	5.0	003-3B5-050-02
Blue	4.0	003-3B5-040-03	5.0	003-3B5-050-03
Green	4.0	003-3B5-040-04	5.0	003-3B5-050-04
Red	4.0	003-3B5-040-05	5.0	003-3B5-050-05
Yellow	4.0	003-3B5-040-06	5.0	003-3B5-050-06
Orange	4.0	003-3B5-040-07	5.0	003-3B5-050-07
Purple	4.0	003-3B5-040-08	5.0	003-3B5-050-08
Black	4.0	003-3B5-040-09	5.0	003-3B5-050-09

CCS Category 6 Leads are designed to exceed the performance requirements of the TIA/EIA Category 6 patch lead specification.

Each lead is individually factory tested to the standard to ensure true Category 6 compatibility.

CCS Category 6 Patch Leads are made from Category 6 stranded cable and are terminated using High Performance modular plugs. We stock a variety leads in lengths from 0.5 to 5 metres, available in a number of different colours.

If required Category 6 Patch Leads can be supplied with individual test reports on CD-ROM for a nominal fee.

## Specification

Plug	High Performance Modular Plug
Cable	Category 6 Stranded Cable
Conforms to	TIA/EIA-568-B.2-1



UTP 4000 Series  
Shuttered Outlet



Features & Benefits

- ✕ High Density, Single Gang 4 Port
- ✕ Category 6 performance
- ✕ Unused jacks protected by shutters
- ✕ Designed for direct wall mounting
- ✕ Custom logo service available



Ordering Information

Product Description

4015 Cat 6 4 Way Shuttered Outlet  
4100 Entry Spacer plate

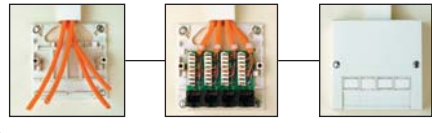
Part Number

008-001-010-01  
008-001-013-01

Specification

Width	87mm
Depth	27mm
Height	87mm
Spacer Plate Depth	8mm
Material	ABS thermoplastic resin, with grade UL94 VO at 1.5mm flame retardancy
Finish	High Gloss
IDC Blocks	4 Way Industry Standard IDC blocks
PCB	1.6mm double sided PTH Boards
Conforms to	4015: TIA/EIA-568-B.2-1 Category 6 Specification

Simple Assembly Sequence



Performance does not have to be bulky, and the CCS 4 Way Shuttered Wall outlet proves it. The 4 Way Shuttered Outlets combines high performance, high density and shutter protected sockets in a single gang package.

Like the other Wall Outlets in the CCS 4000 Series, they are extremely quick and easy to install. Just attach the base plate, snap in the PCB, punch down the cables and install the cover. Gone are the problems of installing modules into a faceplate and pushing excess wires in a back box.

Designed for direct wall mounting with top entry Mini Trunking, an optional spacer plate allows for side and bottom cable entry. In addition, they fit over standard back boxes to provide maximum mounting flexibility.

With 4 ports in a single gang box there is no other product offering the same combination of performance and packaging density.



## Features & Benefits

- ✕ Cat 6 performance
- ✕ Suitable for Gigabit Ethernet
- ✕ Fully shielded die-cast design
- ✕ No special tooling required
- ✕ Industry standard Keystone fitting
- ✕ Tool-less snap-to-fit module

NET<sup>™</sup>  
6



## Specification

Mounting hole size	19.3 x 14.7 mm
Recommended back-box depth	40 mm
Width	18.0 mm
Depth	44.2 mm
Height	22.8 mm
Copper conductor diameter	
Solid:	0.40-0.65 mm / AWG26/1-22/1
Stranded:	0.46-0.61 mm / AWG27/7-24/7
Life (operations)	min. 750
Shielding housing	zinc die-cast
Colour code	T568B
Conforms to	TIA/EIA 568-B.2-1 Category 6 Specification

## Ordering Information

Product Description	Part Number
CCS Cat 6 FTP tool-less keystone	008-010-010-15
CCS 45 x 45 Dual Angled Keystone clip (2 x RJ45 slot)	008-001-001-75

For Shielded Keystone Patch Panels see page 7

CCS tool-less keystone module ensures a quick and easy to terminate installation. The snap-fit to terminate design means that a punch down tool is not required. The module has also been designed to fit all standard keystone applications.

The CCS tool-less keystone module offers high performance transmission that meets or exceeds Category 6 standards.

They have been designed to be installed into most UK and European keystone applications, including standard or angled faceplate products, patch panels or surface boxes.

The module wiring terminals are also colour coded to T568B standards to ensure a quick and easy installation.





### Features & Benefits

- ✕ Available with LSZH or PVC jacket
- ✕ Foil Shielded
- ✕ Every box individually tested in the UK
- ✕ Metre marked for easy installation
- ✕ Performance exceeds Category 6 requirements

NET  
6



### Ordering Information

Product Description	Part Number
CCS Category 6 FTP PVC Solid Cable	001-004-004-01
CCS Category 6 FTP LSZH Solid Cable	001-004-004-51

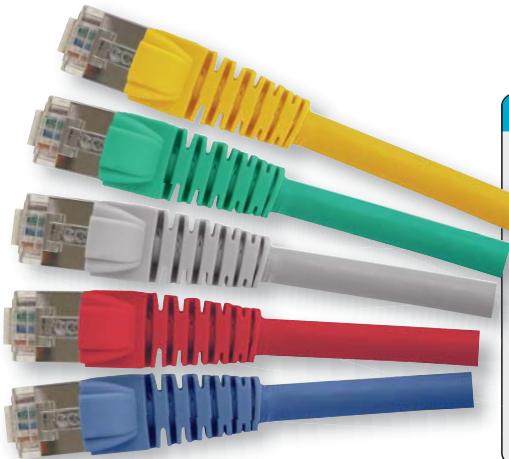
### Specification

Inner Conductor	0.55mm
Insulation	HD Polyethylene
Construction	4 twisted pairs cabled together with spline Foil shield
Colour Code	Pair 1: White/Blue - Blue
Pair 2: White/Orange - Orange	Pair 3: White/Green - Green
	Pair 4: White/Brown - Brown
Jacket	Polyvinyl chloride or Low Smoke Zero Halogen
Overall Diameter	7.1mm
Weight (Kg/Km)	52kg/km
Min Bending Radius Operation	29mm
Min Bending Radius Installation	57mm
Impedance	100+/- 15 Ohms
Capacitance	56 pF/m
Loop Resistance	20 Ohms/100m
NVP	67
Operating Temp	-10 to +40°C
Installation Temp	-10 to +50°C
Conforms To	TIA/EIA-568-B.2-1 Category 6 Specification

CCS Category 6 shielded twisted pair cable is designed for use in next generation data communication networks, and will comfortably support all present applications including Gigabit Ethernet.

CCS Category 6 solid cable offers the performance characteristics required by the Category 6 standards in a shielded format.

When used in conjunction with CCS Category 6 modules and patch panels the user will get a link performance exceeding Category 6 requirements.



#### Features & Benefits

- ✧ Fully shielded for signal protection
- ✧ Shielding prevents contaminant noise from entering the cabling system
- ✧ Individually tested up to 250MHz
- ✧ Available in lengths from 0.5 to 5 metres
- ✧ Confirms fully to EIA/TIA-568-B.2-1

CCS Cat6 FTP patch leads are designed to exceed the performance requirements of the Category 6 specification.

Each lead is individually factory tested to the standard to ensure true Category 6 compatibility.

CCS Cat6 patch leads are made from Category 6 stranded cable and are terminated using High Performance modular plugs.

CCS fully shielded patch leads increase signal isolation and prevent contaminant noise from entering a cabling system.

We stock a variety leads in lengths from 0.5 to 5 metres, available in a number of different colours.

#### Specification

Plug	High Performance Modular Plug
Cable	Category 6 Stranded Cable
Conforms to	EIA/TIA-568-B.2-1

#### Ordering Information

##### Cat6 FTP Patch Lead

Colour	Length (metre)	Part Number	Length (metre)	Part Number
Grey	0.5	003-410-005-01	1.0	003-410-010-01
White	0.5	003-410-005-02	1.0	003-410-010-02
Blue	0.5	003-410-005-03	1.0	003-410-010-03
Green	0.5	003-410-005-04	1.0	003-410-010-04
Red	0.5	003-410-005-05	1.0	003-410-010-05
Yellow	0.5	003-410-005-06	1.0	003-410-010-06
Orange	0.5	003-410-005-07	1.0	003-410-010-07
Purple	0.5	003-410-005-08	1.0	003-410-010-08
Black	0.5	003-410-005-09	1.0	003-410-010-09
Grey	2.0	003-410-020-01	3.0	003-410-030-01
White	2.0	003-410-020-02	3.0	003-410-030-02
Blue	2.0	003-410-020-03	3.0	003-410-030-03
Green	2.0	003-410-020-04	3.0	003-410-030-04
Red	2.0	003-410-020-05	3.0	003-410-030-05
Yellow	2.0	003-410-020-06	3.0	003-410-030-06
Orange	2.0	003-410-020-07	3.0	003-410-030-07
Purple	2.0	003-410-020-08	3.0	003-410-030-08
Black	2.0	003-410-020-09	3.0	003-410-030-09
Grey	4.0	003-410-040-01	5.0	003-410-050-01
White	4.0	003-410-040-02	5.0	003-410-050-02
Blue	4.0	003-410-040-03	5.0	003-410-050-03
Green	4.0	003-410-040-04	5.0	003-410-050-04
Red	4.0	003-410-040-05	5.0	003-410-050-05
Yellow	4.0	003-410-040-06	5.0	003-410-050-06
Orange	4.0	003-410-040-07	5.0	003-410-050-07
Purple	4.0	003-410-040-08	5.0	003-410-050-08
Black	4.0	003-410-040-09	5.0	003-410-050-09

## Features & Benefits

- ✕ Quick and easy to install
- ✕ Snap-fit to terminate
- ✕ Suitable for all standard Keystone applications
- ✕ Certified Cat 5e hardware performance
- ✕ T568B colour coded wiring terminals



## Ordering Information

Product Description	Part Number
CCS Cat 5E UTP tool-less keystone	008-010-010-50
CCS 45 x 45 Dual Angled Keystone Clip (2 x RJ45 slot)	008-001-001-75
CCS 45 x 45 Dual Keystone Clip (1 x RJ45 slot)	008-001-001-67
CCS 45 x 22.5 Single Keystone Clip (1 x RJ45 slot)	008-001-001-68
For Unshielded Keystone Patch Panels see page 12	

## Specification

Width	16.8mm
Depth	35.0mm
Height	21.5mm
Mounting Hole Size	19.3mm x 14.7mm
Material	Polycarbonate/ABS thermoplastic resin with grade UL94 VO at 1.5mm flame retardancy
IDC Labels	Colour coded to T568B
IDC Blocks	Tool less IDC mechanism
Conforms to	TIA/EIA-568-B Category 5E

CCS Tool-less Keystone Module ensures a quick and easy to terminate installation. The snap-fit to terminate design means that a punch down tool is **not required**. The module has also been designed to fit all standard keystone applications.

The CCS tool-less keystone module offers high performance transmission that meets or exceeds Cat 5e standards.

They have been designed to be installed into most UK and European keystone applications, including standard or angled faceplate products, patch panels or surface boxes.

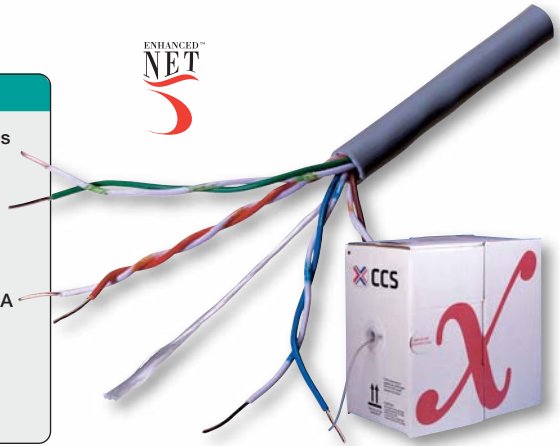
The module wiring terminals are also colour coded to T568B standards to ensure a quick and easy installation.





### Features & Benefits

- ✕ Suitable for Gigabit Ethernet applications
- ✕ UL tested
- ✕ Every box individually tested in the UK
- ✕ Supplied metre marked in Reelex boxes for easy installation
- ✕ Excellent performance exceeding TIA/EIA Enhanced Category 5 specifications



### Ordering Information

Product Description	Part Number
Enhanced Category 5 UTP Solid Cable (Grey)	001-003-003-62
Enhanced Category 5 UTP LSZH Solid Cable (Violet)	001-003-003-63
Enhanced Category 5 UTP Solid External Cable (Black)	001-003-004-30

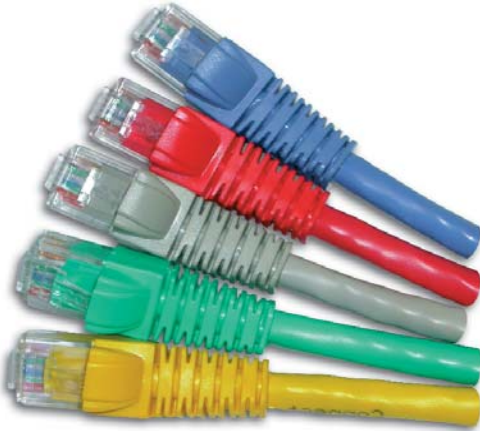
### Specification

Inner Conductor	0.52mm plain copper
Insulation	High Density Polyethylene
Construction	4 twisted pairs cabled together
Colour Code	Pair 1: White/Blue-Blue/White Pair 2: White/Orange-Orange/White Pair 3: White/Green-Green/White Pair 4: White/Brown-Brown/White
Jacket	PVC, PE (External) or Low Smoke Zero Halogen
Overall Diameter	5.0 +/- 0.2mm
Weight (Kg/Km)	31
Min Bending Radius	20mm
Impedance	1-100 MHz 100 Ohm +/- 12 Ohm - (Typical) +/- 15 Ohm - (Max)
Capacitance	4.9 nF/100m - Typical 5.6 nF/100m - (Max)
DC Resistance	8.1 Ohm/100m - Typical 9.38 Ohm/100m - (Max)
Velocity Ratio	66%
Conforms To	TIA/EIA-568-B Enhanced Category 5 specification
Operating Temperature Range	-20°C to +70°C
Installation Temperature Range	0°C to +50°C

CCS Enhanced Category 5 UTP Cable is designed for High Speed LANs including Gigabit Ethernet Applications.

When used with Enhanced Category 5 Panels and Modules it gives the exceptional performance required for transmission over all four pairs.

The cable is supplied in easy to use Reelex boxes and is available with standard grey PVC, purple LSZH or black PE outer sheath.



### Features & Benefits

- ✕ Conforms fully to TIA/EIA-568-B
- ✕ Lengths available from 0.5 to 5 metres
- ✕ Available in nine different colours
- ✕ Each lead is individually tested
- ✕ Plugs conform to ISO8877
- ✕ Individually QA tested

CCS Enhanced Category 5 UTP Patch Leads are designed to exceed the performance requirements of the Enhanced Category 5 specification.

CCS leads are made from Enhanced Category 5 stranded cable and are terminated using high performance modular plugs.

CCS Patch Leads are made from Enhanced Category 5 stranded cable and are terminated using high performance modular plugs.

Each lead is individually factory tested to the standard to ensure true standard compatibility.

We stock a variety of booted and unbooted leads in lengths from 0.5 to 5 metres, available in a number of different colours.

### Specification

Plug	High Performance Modular Plug
Cable	Enhanced Category 5 Stranded Cable
Conforms to	TIA/EIA-568-B

### Ordering Information

#### Cat 5E UTP Patch Lead

Colour	Length (metre)	Part Number	Length (metre)	Part Number
Grey	0.5	003-3NB4-005-01	1.0	003-3NB4-010-01
White	0.5	003-3NB4-005-02	1.0	003-3NB4-010-02
Blue	0.5	003-3NB4-005-03	1.0	003-3NB4-010-03
Green	0.5	003-3NB4-005-04	1.0	003-3NB4-010-04
Red	0.5	003-3NB4-005-05	1.0	003-3NB4-010-05
Yellow	0.5	003-3NB4-005-06	1.0	003-3NB4-010-06
Orange	0.5	003-3NB4-005-07	1.0	003-3NB4-010-07
Purple	0.5	003-3NB4-005-08	1.0	003-3NB4-010-08
Black	0.5	003-3NB4-005-09	1.0	003-3NB4-010-09
Grey	2.0	003-3NB4-020-01	3.0	003-3NB4-030-01
White	2.0	003-3NB4-020-02	3.0	003-3NB4-030-02
Blue	2.0	003-3NB4-020-03	3.0	003-3NB4-030-03
Green	2.0	003-3NB4-020-04	3.0	003-3NB4-030-04
Red	2.0	003-3NB4-020-05	3.0	003-3NB4-030-05
Yellow	2.0	003-3NB4-020-06	3.0	003-3NB4-030-06
Orange	2.0	003-3NB4-020-07	3.0	003-3NB4-030-07
Purple	2.0	003-3NB4-020-08	3.0	003-3NB4-030-08
Black	2.0	003-3NB4-020-09	3.0	003-3NB4-030-09
Grey	4.0	003-3NB4-040-01	5.0	003-3NB4-050-01
White	4.0	003-3NB4-040-02	5.0	003-3NB4-050-02
Blue	4.0	003-3NB4-040-03	5.0	003-3NB4-050-03
Green	4.0	003-3NB4-040-04	5.0	003-3NB4-050-04
Red	4.0	003-3NB4-040-05	5.0	003-3NB4-050-05
Yellow	4.0	003-3NB4-040-06	5.0	003-3NB4-050-06
Orange	4.0	003-3NB4-040-07	5.0	003-3NB4-050-07
Purple	4.0	003-3NB4-040-08	5.0	003-3NB4-050-08
Black	4.0	003-3NB4-040-09	5.0	003-3NB4-050-09

## Features & Benefits

- ✕ Tamperproof design
- ✕ High Density, Single Gang 4 Port
- ✕ Enhanced Category 5 Performance
- ✕ Designed for direct wall mounting
- ✕ Custom logo service available



## Ordering Information

Product Description	Part Number
4030 4 Way Enhanced Cat 5 Tamperproof Wall Outlet	008-001-012-01
4100 Entry Spacer Plate	008-001-013-01

## Specification

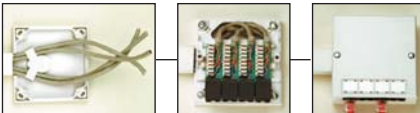
Width	87mm
Depth	27mm
Height	87mm
Spacer Plate Depth	8mm
Material	ABS thermoplastic resin, with grade UL94 VO at 1.5mm flame retardancy
Finish	High Gloss
IDC Blocks	4 Way Industry Standard IDC blocks
PCB	1.6mm double sided PTH Boards
Conforms to	TIA/EIA-568-B Enhanced Category 5 Specification

The CCS 4000 series offers Enhanced Category 5 performance in a high-density package. The position of the sockets allow for a compact installation without protruding leads.

The CCS 4030 outlet restricts the user's access to patch leads, eliminating unauthorised or accidental patch lead disconnection which is one of the most common causes of network problems.

The 4030 is part of the 4000 series product range which are extremely quick and easy to install; just attach the base plate, snap in the PCB, punch down the cables and install the cover. But the 4030 has the added benefit that leads cannot be unplugged without first removing the cover.

## Simple Assembly Sequence



The 4000 series outlets have been designed for direct wall mounting with top entry mini trunking, and an optional spacer plate provides side cable entry. In addition, they fit on a standard back box to provide maximum mounting flexibility.





Features & Benefits

- ✂ High Density, Single Gang 4 Port
- ✂ Enhanced Category 5 Performance
- ✂ No protruding leads
- ✂ Designed for direct wall mounting
- ✂ Custom logo service available
- ✂ Also available in a 2 port version

The CCS 4000 series offers Enhanced Category 5 performance in a high-density package. The position of the sockets allow for a compact installation without protruding leads.

The CCS 4000 series is extremely quick and easy to install. Just attach the base plate, snap in the PCB, punch down the cables and install the cover. Gone are the problems of installing modules into a faceplate and pushing excess wires in a back box.

The 4000 series outlets have been designed for direct wall mounting with top entry mini trunking, and an optional spacer plate provides side cable entry. In addition, they fit on a standard back box to provide maximum mounting flexibility.

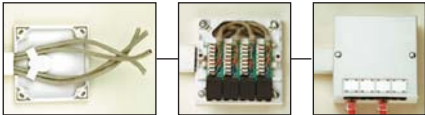
Ordering Information

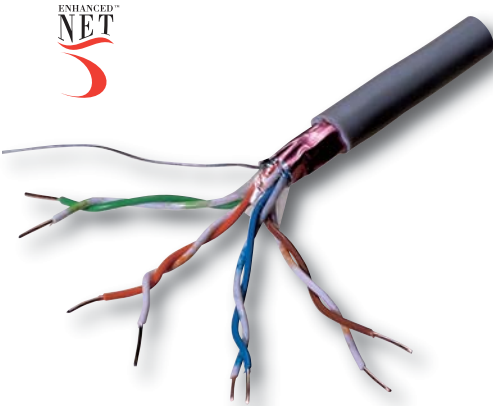
Product Description	Part Number
4010 4 Way Enhanced Cat 5 Shuttered Outlet	008-001-010-05
4020 4 Way Enhanced Cat 5 Vertical Wall Outlet	008-001-011-01
4022 2 Way Enhanced Cat 5 Vertical Wall Outlet	008-001-011-03
4100 Entry Spacer plate	008-001-013-01

Specification

Width	87mm
Depth	27mm
Height	87mm
Spacer Plate Depth	8mm
Material	ABS thermoplastic resin, with grade UL94 VO at 1.5mm flame retardancy
Finish	High Gloss
IDC Blocks	4 Way Industry Standard IDC blocks
PCB	1.6mm double sided PTH Boards
Conforms to	TIA/EIA-568-B Enhanced Category 5 Specification

Simple Assembly Sequence





CCS Enhanced Category 5 FTP Cable is designed for high speed LANs including Gigabit Ethernet Applications.

When used with Enhanced Category 5 FTP Modules and panels it gives the exceptional performance required for transmission over all four pairs.

The cable is supplied in easy to use Reelex boxes and is available with standard grey PVC, or Purple LSZH outer sheath.

Features & Benefits

- ✕ Supplied in Reelex™ boxes for easy installation
- ✕ Excellent performance - exceeding TIA/EIA-568-B
- ✕ Meter marked
- ✕ Excellent Electro Magnetic Compatibility
- ✕ 24 AWG Solid Copper Cores
- ✕ Suitable for Gigabit Ethernet applications

Ordering Information

Product Description	Part Number
Enhanced Category 5 FTP Solid Cable	001-004-010-01
Enhanced Category 5 FTP LSZH Solid Cable	001-004-001-62

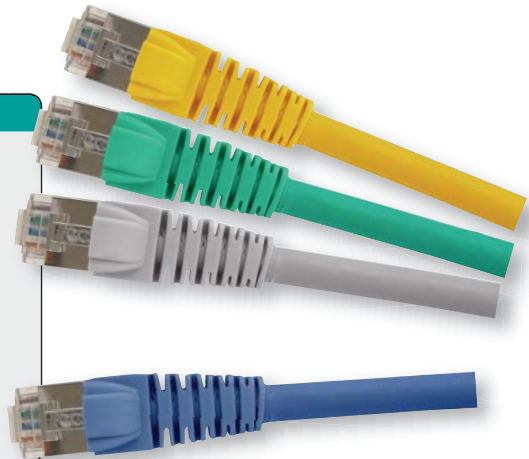
Specification

Inner Conductor	0.52mm plain copper
Insulation	0.91mm solid polyethylene
Screen	Overall aluminium / polyester type, longitudinally applied, aluminium side in, with a 0.40mm tinned copper drain wire applied under the screen
Construction	4 twisted pair cables together and wrapped in polyester tape
Colour Code	Pair 1: White/Blue - Blue
	Pair 2: White/Orange - Orange
	Pair 3: White/Green - Green
	Pair 4: White/Brown - Brown
Jacket	PVC to BS6746 Type 6 or Low Smoke Zero Halogen
Overall Diameter	5.80 ± 0.30mm
Weight (Kg/Km)	38
Installation Temperature Range	0°C to +50°C
Operating Temperature Range	-20°C to +70°C
Impedance	100 Ohms ± 15 Ohms
Capacitance	46 pF/m
Inner Conductor	94 Ohms / km
Velocity Ratio	76%
Conforms To	TIA/EIA-568-B Enhanced Category 5 specification



### Features & Benefits

- ✘ Enhanced Category 5 performance
- ✘ Fully shielded to increase signal isolation
- ✘ Individually performance tested
- ✘ Available in lengths from 0.5 to 5 metres
- ✘ Wide range of colours



### Ordering Information

#### Cat5E FTP Patch Lead

Colour	Length (metre)	Part Number	Length (metre)	Part Number
Grey	0.5	003-4NB4-005-01B	1.0	003-4NB4-010-01B
Blue	0.5	003-4NB4-005-03B	1.0	003-4NB4-010-03B
Green	0.5	003-4NB4-005-04B	1.0	003-4NB4-010-04B
Red	0.5	003-4NB4-005-05B	1.0	003-4NB4-010-05B
Yellow	0.5	003-4NB4-005-06B	1.0	003-4NB4-010-06B
Grey	2.0	003-4NB4-020-01B	3.0	003-4NB4-030-01B
Blue	2.0	003-4NB4-020-03B	3.0	003-4NB4-030-03B
Green	2.0	003-4NB4-020-04B	3.0	003-4NB4-030-04B
Red	2.0	003-4NB4-020-05B	3.0	003-4NB4-030-05B
Yellow	2.0	003-4NB4-020-06B	3.0	003-4NB4-030-06B
Grey	4.0	003-4NB4-040-01B	5.0	003-4NB4-050-01B
Blue	4.0	003-4NB4-040-03B	5.0	003-4NB4-050-03B
Green	4.0	003-4NB4-040-04B	5.0	003-4NB4-050-04B
Red	4.0	003-4NB4-040-05B	5.0	003-4NB4-050-05B
Yellow	4.0	003-4NB4-040-06B	5.0	003-4NB4-050-06B

(Orange, White, Black and Purple colours are also available)

CCS Enhanced Category 5 FTP Patch Leads are designed to exceed the performance requirements of the Enhanced Category 5 specification.

CCS fully shielded patch leads increase signal isolation and prevent contaminant noise from entering a cabling system.

CCS Patch Leads are made from Enhanced Category 5 stranded cable and are terminated using high performance modular plugs.

Each lead is individually factory tested to the standard to ensure true standard compatibility.

We stock a variety of booted and unbooted leads in lengths from 0.5 to 5 metres, available in a number of different colours.

### Specification

Plug	High Performance Modular Plug
Cable	Enhanced Category 5 Stranded Cable
Conforms to	EIA/TIA-568-B Enhanced Category 5