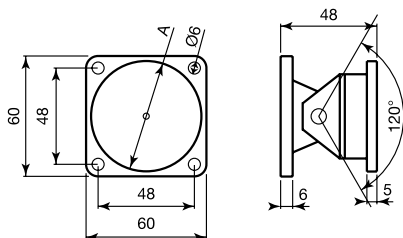


# ACCESSORIES FOR ELECTROMAGNETIC DOOR RELEASE UNITS

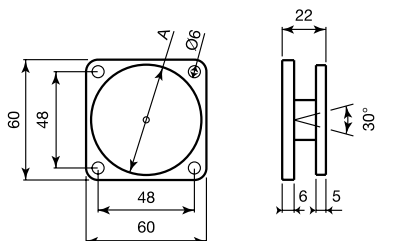
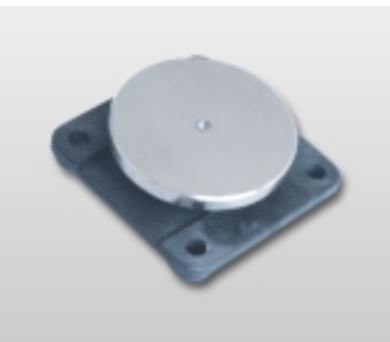
1341 1351 1361



- Flexible keeper plate for electromagnetic door release units
- Allows a plate angular rotation of 120°
- With impact damper
- Steel plate
- Black thermoplastic structure

	1341	1351	1361
A	45 mm	55 mm	60 mm

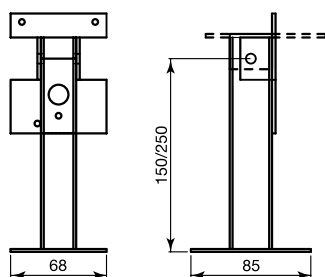
1343 1353 1363



- Fix keeper plate for electromagnetic door release units
- Allows a plate angular rotation of 30°
- Compact dimensions
- With impact damper
- Steel plate
- Black thermoplastic structure

	1343	1353	1363
A	45 mm	55 mm	60 mm

13ST15 13ST25



- Floor or wall-mounting bracket for electromagnets series 13000 and 13100
- Steel plate structure
- Epoxy white painting

## ORDER CODES

Code	Description	Pcs./pack.	Package weight	Application
1341	Flexible keeper plate, diam. 45 mm	1	0,13 Kg	Series 13100
1343	Fix keeper plate, diam. 45 mm	1	0,11 Kg	Series 13100
1351	Flexible keeper plate, diam. 55 mm	1	0,17 Kg	Electromagnetic door release units from 25 to 50 kg (1365 and 1367 excluded)
1353	Fix keeper plate, diam. 55 mm	1	0,15 Kg	Electromagnetic door release units from 25 to 50 kg (1365 and 1367 excluded)
1361	Flexible keeper plate, diam. 60 mm	1	0,21 Kg	Electromagnetic door release units 100 kg
1363	Fix keeper plate, diam. 60 mm	1	0,19 Kg	Electromagnetic door release units 100 kg
13ST15	Floor/wall-mounting bracket 150 mm	1	0,50 Kg	Series 13000. Series 13100
13ST25	Floor/wall-mounting bracket 250 mm	1	0,65 Kg	Series 13000. Series 13100

## REMOTE CONTROL FOR ELECTROMAGNETIC DOOR RELEASE UNITS

Electromagnetic units can be released from the central control unit or a local release button, or also from a remote button or control panel. For these applications, codes **2493**, **2495**, **2498** are available (see Security System Components catalogue).

ELECTROMAGNETIC DOOR RELEASE UNITS