

# SERIES 1330 1340

## Compact electromagnetic door release unit

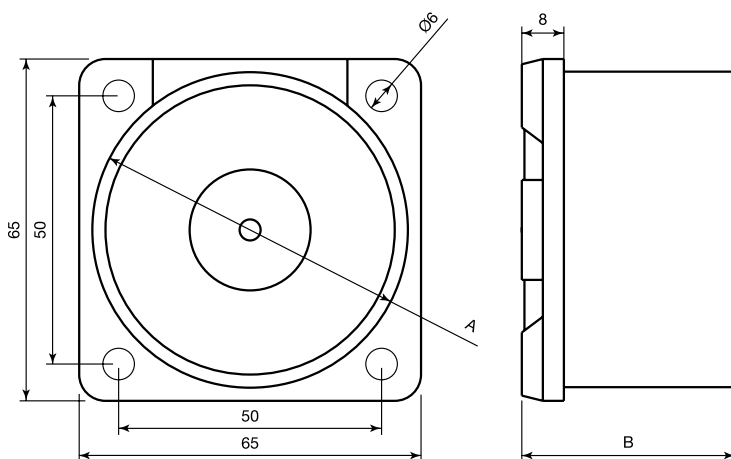
- Wall mounting
- Holding strength 25, 50 and 100 kg
- Versions available with release button
- Provided with damping keeper plate
- Permanent version

Electromagnetic door release unit designed to hold open fire or smoke stop doors, for convenience and then release automatically them in response to an emergency. The simple and compact design takes up little room and offers an interesting quality/price ratio. An integrated spring extractor allows to overcome any residual magnetism, ensuring a fast and reliable door release.

Version **1365**: permanent electromagnetic door release unit: it keeps doors open with no energy consumption thanks to a powerful permanent magnet integrated in the keeper plate. A 24V voltage pulse generates a magnetic field, opposite to the permanent one, that separates the two parts, allowing the door closure. All units include a flexible door mounted keeper plate.

### GENERAL SPECIFICATIONS

Magnet base material	Thermoplastic black
Core material	Steel
Keeper plate material	Thermoplastic support, black, steel plate
Operation	Release with no power supply Version 1365: release with power supply
Operating temperature	-10°C to +55°C
Protection degree	IP 40
Standard equipment	Flexible keeper plate
Packaging	1 pcs./package



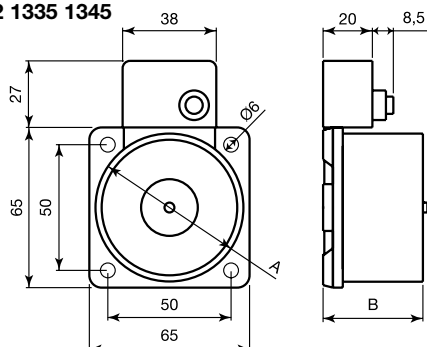
### ORDER CODES

Code	Holding strength $\pm 15\%$	Rated voltage	Rated current	Core A diam.	Height B	Release button	Connection type	Auxiliary keeper plate	Package weight	Notes
1329	25 kg/245 N	24V DC	20 mA	50 mm	30 mm	no	Wire	Code 1351	0,48 kg	
1332	25 kg/245 N	24V DC	20 mA	50 mm	30 mm	yes	Terminal	Code 1351	0,49 kg	
1330	50 kg/490 N	24V DC	65 mA	50 mm	36 mm	no	Wire	Code 1351	0,54 kg	
1330 D	50 kg/490 N	24V DC	65 mA	50 mm	36 mm	no	Wire	Code 1351	0,54 kg	2 protection diodes, loose
1335	50 kg/490 N	24V DC	65 mA	50 mm	36 mm	yes	Terminal	Code 1351	0,55 kg	
1340	100 kg/980 N	24V DC	100 mA	60 mm	40,5 mm	no	Wire	Code 1361	0,80 kg	
1340 D	100 kg/980 N	24V DC	100 mA	60 mm	40,5 mm	no	Wire	Code 1361	0,80 kg	2 protection diodes, loose
1345	100 kg/980 N	24V DC	100 mA	60 mm	40,5 mm	yes	Terminal	Code 1361	0,81 kg	
1365	25 kg/245 N	24V DC*	250 mA*	50 mm	36 mm	no	Wire	magnetic**	0,71 kg	Permanent

\* to release version 1365, a 24V DC pulse has to be applied for a longer period than 0.5 s

\*\* same magnetic keeper plate as that in code 1367

### 1332 1335 1345



### ACCESSORIES AVAILABLE (see accessories page)

Code	Description
1353	Fix keeper plate, diameter 55 mm
1363	Fix keeper plate, diameter 60 mm