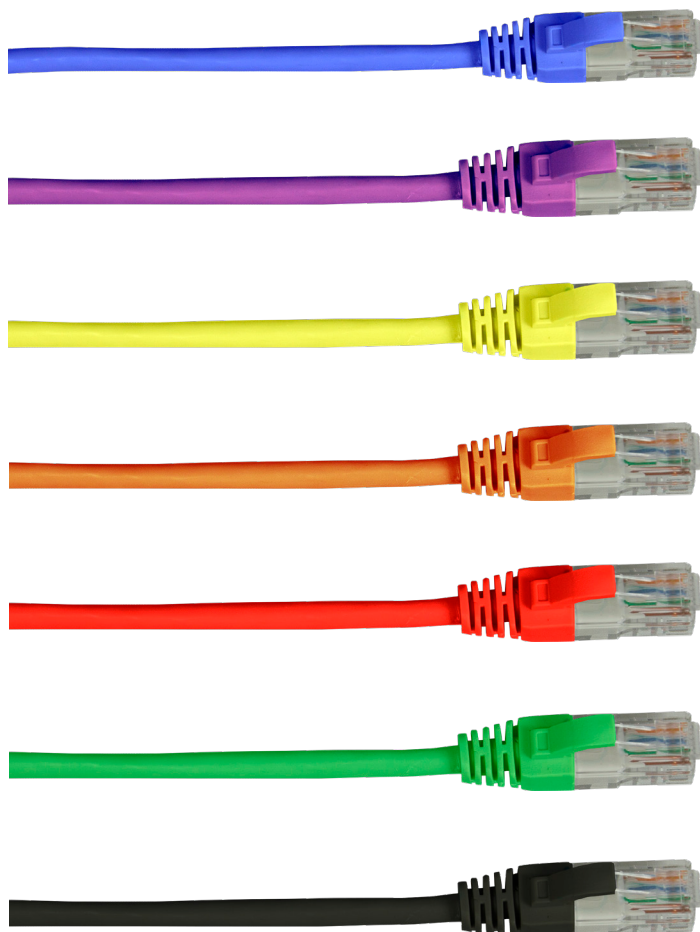


# Copper Cabling Solutions

## Category 6 UTP RJ45 Patch Leads

Connectix Category 6 RJ45 UTP Patch Leads are designed to exceed performance requirements. Magic Patch leads are made from Category 6 stranded cable and are terminated using high performance modular plugs. Each lead is individually factory tested to the standard to ensure true standard compatibility. We stock a variety of booted and unbooted leads in lengths from 0.5 metres, available in several different colours.



### Features & Benefits

- Fully conforms to ANSI/TIA-568-C
- Available from stock in lengths from 0.5 to 5 metres
- Available in nine colours
- Each lead is individually QA tested
- Plugs conform to ISO8877

### Product Specifications

Plug	High performance modular plug
Cable	26 AWG LSZH Category 6 standard cable
PVC Available	Yes
Cable Diameter	Approx. 4.8 mm
Conforms to	ANSI/TIA-568-C Category 6 Specification

### Ordering Information

Product Description	Part Number
Cat 6 RJ45 0.5m Patch Lead	003-3B5-005-***
Cat 6 RJ45 1m Patch Lead	003-3B5-010-***
Cat 6 RJ45 2m Patch Lead	003-3B5-020-***
Cat 6 RJ45 3m Patch Lead	003-3B5-030-***
Cat 6 RJ45 4m Patch Lead	003-3B5-040-***
Cat 6 RJ45 5m Patch Lead	003-3B5-050-***
Cat6 RJ45 10m Patch Lead	003-3B5-100-***

### Cable Colour Code \*\*\*

Grey	01C	Yellow	06C
White	02C	Orange	07C
Blue	03C	Purple	08C
Green	04C	Black	09C
Red	05C		